

DEC 22 1998
 FILE DO NOT MAIL

SURVEY &
 REMONUMENTATION

LAND CORNER RECORDATION CERTIFICATE
 Filing Requirement of Act 74, Mich. P.A. 1970

MAR 02 1999

SECTION

For corners in

WAYNE (County) Located In: Corner Code #

1. Public Land Survey	T 2 S	R 9 E	L-5
	T	R	GARDEN CITY
	T	R	NANKIN TWP (08)
	T	R	
	T	R	
2. Property Controlling in Section	S	T	R
	S	T	R
3. Miscellaneous Property in Sec.	S	T	R
	S	T	R

Compliance with ACT 345, P.A. 1990
 APPROVED ON: 12-10-98
 WAYNE COUNTY REMONUMENTATION PEER GROUP COMMITTEE
 Register of Deeds Stamp & File Number

4. Lot No. _____, Recorded Plat _____
 5. Private Claims _____

I, PETER P. PALCZYNSKI in a field survey on 1 DECEMBER 19 98, do hereby certify that under requirements of P.A. 74, Michigan P.A. of 1970, the corner points mentioned in lines 1 and 2 above were in conformance with regulations and rules therefore as required in the current manual of survey instructions of the United States Department of the Interior, Bureau of Land Management or by a decree of a Court of Law and/or that the corner points mentioned in lines 3, 4 and 5 above were in conformance with the rules of the Michigan Board of Land Surveyors or by a Decree of a Court of Law; established, re-established, monumented, re-monumented, recovered, found as expressed below:

NOTE: Not more than 4 corners, all in the same town and range, may be recorded on this certificate.

A. Description of original monument and accessories and/or subsequent restoration:
 1816 G.L.O. - SET POST ELM 6" N65°E 5 LKS.
 JOSEPH FLETCHER MAPLE 9" N11°W 14 LKS.

SEE BACK OF THIS SHEET (NEXT PAGE)
 FOR CONTINUATION OF SECTION "A"

B. Description of corner evidence found and/or method applied in restoring or reestablishing corner:

FOUND 1" FROST PIN IN MONUMENT BOX, AT CENTERLINE INTERSECTION OF FORD RD & HARRISON RD IN 66' WIDE ASPHALT PAVEMENT WITH CONCRETE CURBS. REPLACED WITH REMON ALUMINUM CAP STAMPED "PPP PS #30096" ON NEW CONC. MON.
 MEASURED:
 M-5/L-5/K-5 = 180°03'31"
 (WPA = 180°03'00")
 K-5/L-5/M-5 = 179°56'29"
 (WPA = 179°56'45")

CORNER POSITION VERIFIED USING COMPARISONS TO RECORD INFORMATION FROM SECTION "A".

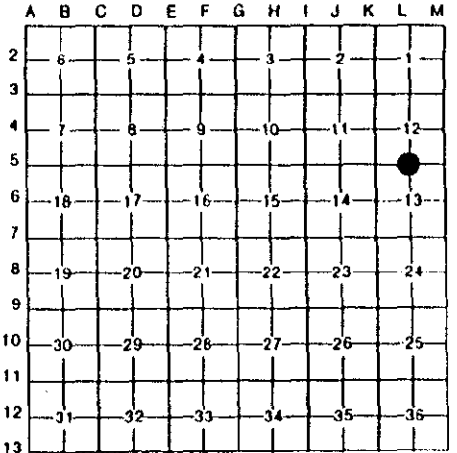
MEASURED:
 L-5 / M-5 = 2660.47' (2660.17 / 2660.02' WPA)
 L-5 / K-5 = 2599.27' (2599.07' / 2599.07' WPA)

C. Description of monument for corner and accessories established to perpetuate locating the position of the corner:
 L-5, T2S, R9E
 FOUND 1" FROST PIN IN MONUMENT BOX, AT CENTERLINE INTERSECTION OF FORD RD & HARRISON RD IN 66' WIDE ASPHALT PAVEMENT WITH CONCRETE CURBS. REPLACED WITH REMON ALUMINUM CAP STAMPED "PPP PS #30096" ON NEW CONC. MON.
 SET NAIL/WCR TAG IN SOUTHEAST FACE OF UTILITY POLE N60°E 70.18'
 SET NAIL/WCR TAG IN NORTHWEST FACE OF UTILITY POLE S75°E 119.62'
 CENTERLINE FIRE HYDRANT STEM (2) (R=63.03') S29°E 67.80'
 SET NAIL/WCR TAG IN SOUTHEAST FACE UTILITY POLE S25°W 81.69'
 FD PK NAIL/MDSH TAG IN SE FACE UTILITY POLE (7) (R=83.23') S26°W 83.12'
 SET NAIL/WCR TAG IN NORTHEAST FACE OF UTILITY POLE N33°W 63.80'
 FOUND RLS #11192 TAG IN NORTHEAST FACE OF UTILITY POLE N33°W 63.80'

SELECTED LOCATION IS ACCEPTED BY THE CONTRACTOR AND IS GENERALLY ACCEPTED BY PROFESSIONAL SURVEYORS AS THE BEST AVAILABLE EVIDENCE OF THE POSITION OF THE ORIGINAL CORNER.

Signed by [Signature] Date 21 DEC 98

Surveyor's Michigan License No. 30096
 2S9EL-5.DOC R LCR 10 4R 2PG U. [Signature]



\$4.00 REMONUMENTATION
 \$10.00 DEED
 RECORDED
 FOREST E. YOUNGBLOOD, REGISTER OF DEEDS
 WAYNE COUNTY, MI
 Receipt #101465



56455380LS 12/22/1998 08:34AM

MAR 02 1999

SECTION

1998 WAYNE COUNTY REMONUMENTATION PROGRAM

Continuation of Section "A"

History compiled by:
Peter P. Palczynski, P.S. # 30096
AMBIT LAND SURVEYORS, INC.

NANKIN TOWNSHIP TOWN 2 SOUTH, RANGE 9 EAST
L-5 (SECTION CORNER 12 & 13)

DATE	COMPANY SURVEYOR JOB #	P.S. #	P.A. 74 L.C.R.C.	LOCATION OF SURVEY	MONUMENT DESCRIPTION	WITNESSES	BEARING & DISTANCE	ID #	COMMENT
1816	G.L.O. JOSEPH FLETCHER				SET POST	ELM 6" MAPLE 9" GUY POLE	N65°E 5 LKS N11°W 14 LKS.		NOTES = 39.98 CHAINS
1930'S	W.P.A.				IRON (N-13 #54)	TOP OF HYDRANT TEL POLE ED POLE	NE 68.68' SE 68.03' SW 31.4' NW 46.80'	1 2 3 4	GONE MEAS = 67.80' GONE GONE
18 NOV 24	CHARLES E KNIGHT REG. CIVIL ENGINEER			FOLKER'S GARDEN CITY ACRES #12 L. 51 P. 95, WCR.	NE 1/4 SECTION 13 T2S R 9E	NOT STATED	L-5 / L-6 = 2613.81' / PLAT		W.P.A. RECORD: L-5/M-5 = 2660.17 / 2660.02 L-5/K-5 = 2599.07 / 2599.07 M-5/L-5/K-5 = 180° 03' 00" K-5/L-5/M-5 = 179° 56' 45"
10 JUL 25	CHARLES E KNIGHT REG. CIVIL ENGINEER			I.L. BLACK'S GARDEN CITY ADDITION #1 L. 56 P. 3, WCR	SW 1/4 SECTION 12 T2S R9E	NOT STATED	K-5/L-5/L-4 = 90° 44' 00" / PLAT		M = 90°43' 19"
16 DEC 25	H. F. CUSHING, R.L.S.			MONTGOMERY'S SUB. L. 58, P. 53, WCR	NW 1/4 SECTION 13 T2S R9E	NOT STATED	L-5 / L-4 = 2627.63' / PLAT		L-6 NOT FOUND
24 OCT 28	CHARLES E KNIGHT REG. CIVIL ENGINEER			MCFARLANE BROS RAINBOW GARDENS L. 63 P. 47, WCR	SE 1/4 SECTION 12 T2S R9E	NOT STATED			L-4 NOT FOUND
11 FEB 70	WCRC SECTION CORNER WITNESS RECORD				S 1/4 CORNER SECTION 12	MBT POLE CENTERLINE HYDRANT ED POLE ED POLE	NE 55.20' SE 68.02' SW 83.23' NW 52.78'	5 2 7 8	GONE M = 67.80' M = 83.12' GONE