

FEB 28 1994

COMMISSION

RC 1144

LAND CORNER RECORDATION CERTIFICATE
Filing Requirement of Act 74, Mich. P.A. 1970

LI 25992 PA 828

For corners in

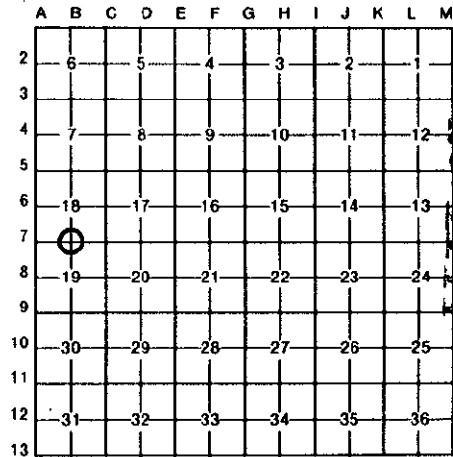
Table with columns: Wayne (County), Located In, Corner Code #. Rows include Public Land Survey, Property Controlling in Section, and Miscellaneous Property in Sec.

Compliance with ACT 345, P.A. 1990
APPROVED ON: 11-30-93 [Signature]
WAYNE COUNTY REMONUMENTATION PEER GROUP COMMITTEE

Register of Deeds Stamp & File Number

- 4. Lot No. , Recorded Plat
5. Private Claims

I, Lawrence R. Feindt, in a field survey on October 29, 1993, do hereby certify that under requirements of P.A. 74, Michigan P.A. of 1970, the corner points mentioned in lines 1 and 2 above were in conformance with regulations and rules therefore as required in the current manual of survey instructions of the United States Department of the Interior, Bureau of Land Management or by a decree of a Court of Law and/or that the corner points mentioned in lines 3, 4 and 5 above were in conformance with the rules of the Michigan Board of Land Surveyors or by a Decree of a Court of Law; established, re-established, monumented, re-monumented, recovered, found as expressed below:



NOTE: Not more than 4 corners, all in the same town and range, may be recorded on this certificate.

A. Description of original monument and accessories and/or subsequent restoration:

B-7) 1/4 Corner Common to Sections 18 and 19, T 2 S, R 10 E

GENERAL LAND OFFICE SET POST FOR CORNER ELM 16"-N33 E-24 LINKS(15.84') LYNN 10"-N84 E-10 LINKS(6.60') DECEMBER 21, 1816 BY: JOSEPH FLETCHER, DS
WAYNE COUNTY BUREAU OF TAXATION STONE NNE'LY-18.10'-CROSS E. END OF CULVERT TOP EDGE ENE'LY-62.25'-TEL. POLE SSE'LY-25.67'-3" ELM
FOUND MONUMENT IN MONUMENT BOX N34 41'E-60.17'-PK NAIL NW SIDE OF L.P. S52 56'E-60.50'-PK NAIL SE SIDE OF DEADMAN POLE S36 55'W-73.74'-PK NAIL SW SIDE OF DETROIT EDISON LIGHT POLE N51 52'W-48.86'-PK NAIL SE SIDE OF DETROIT EDISON POLE
JULY 7, 1986 BY: WALTER JOHN ZBIKOWSKI, PS #21586 RECORDED IN LIBER 22834, PAGE 745, WCR

B. Description of corner evidence found and/or method applied in restoring or reestablishing corner:

B-7) 1/4 Corner Common to Sections 18 and 19, T 2 S, R 10 E

Found concrete monument in monument box. Distance to C-7 measured 2654.88' (WPA = 2654.96'). Corner was confirmed with irons found in "Dearborn Manor Sub." as recorded in Liber 39, Page 99, Wayne County records; "Slavik's Daly Sub." as recorded in Liber 74, Page 21, Wayne County records; and "Cherry Hill Manor No. 3" as recorded in Liber 72 of Plats, Page 60, Wayne County records.



C. Description of monument for corner and accessories established to perpetuate locating the position of the corner:

B-7) 1/4 Corner Common to Sections 18 and 19, T 2 S, R 10 E

Found concrete monument in monument box and placed Wayne County brass disk stamped with license #21566 on monument. Corner is accepted as a careful and faithful reestablishment of the position of the original corner.

Witnesses: N35 E - 60.49' - Found PK nail in SE'ly face of utility pole
S52 E - 73.69' - Found PK nail in SW'ly face of utility pole
S36 W - 48.83' - Found PK nail in SE'ly face of utility pole
N51 W - 60.24' - Found double-headed nail in NE'ly face of utility pole

93 NOV 30 AM 11:17
FOREST COUNTY REGISTERED DEEDS WAYNE COUNTY, MI

Signed by Lawrence R. Feindt Date November 29, 1993
Surveyor's Michigan License No. 21566