

FEB 29 1993

LI 27018 PA 406

LAND CORNER RECORDATION CERTIFICATE
Filing Requirement of Act 74, Mich. P.A. 1970

For corners in

Table with columns: Wayne (County), Located In, Corner Code #. Rows include Public Land Survey, Property Controlling in Section, Miscellaneous Property in Sec.

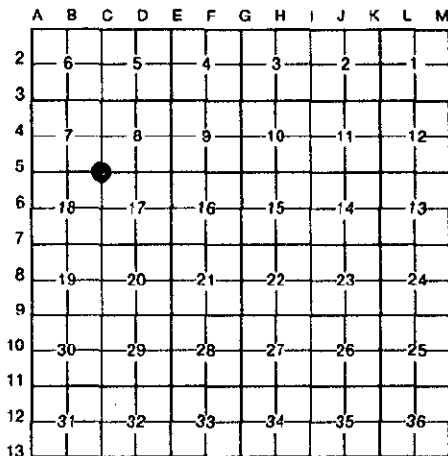
Compliance with ACT 345, P.A. 1990

APPROVED ON: 12-8-93
WAYNE COUNTY REMONUMENTATION PEER GROUP COMMITTEE

Register of Deeds Stamp & File Number

- 4. Lot No.
5. Private Claims

I, George M. Platz, in a field survey on November 15, 1993, do hereby certify that under requirements of P.A. 74, Michigan P.A. of 1970, the corner points mentioned in lines 1 and 2 above were in conformance with regulations and rules therefore as required in the current manual of survey instructions of the United States Department of the Interior, Bureau of Land Management or by a decree of a Court of Law and/or that the corner points mentioned in lines 3, 4 and 5 above were in conformance with the rules of the Michigan Board of Land Surveyors or by a Decree of a Court of Law; established, re-established, monumented, re-monumented, recovered, found as expressed below:



NOTE: Not more than 4 corners, all in the same town and range, may be recorded on this certificate.

A. Description of original monument and accessories and/or subsequent restoration:

C-5 CORNER COMMON TO SECTIONS 7, 8, 17, 18
GLO SURVEY PERFORMED BY JOSEPH FLETCHER IN THE EARLY 1800'S. THE ACTUAL DATE AND TYPE OF POST SET WAS NOT SPECIFIED IN THE NOTES.
CITY OF DEARBORN ENGINEERING RECORDS (FIELD BOOK NO. 1047, DATED 1934). FOUND 3/4" IRON.
MDOT WITNESS CARD (DATED 1964). BRASS CAP IN MONUMENT BOX.
L.C.R.C. L. 20443, P.736 W.C.R. (DATED 1979). FOUND MONUMENT BOX.

B. Description of corner evidence found and/or method applied in restoring or reestablishing corner:

C-5 FOUND BRASS DISK IN MONUMENT BOX FROM ABOVE REMAINING ACCESSORIES. ALL RECORDED INFORMATION ON FILE WITH THE WAYNE COUNTY REGISTER OF DEEDS IS DOCUMENTED IN THE RESEARCH DOSSIER. NO KNOWN UNRECORDED SURVEYS HAVE BEEN OBTAINED WHICH DIRECTLY TIE INTO THIS CORNER. RECORD PLAT DIMENSIONS DO NOT PERFECTLY COINCIDE WITH TODAY'S MEASURED VALUES BETWEEN ADJACENT SECTION CORNERS. ANGULAR VALUES, HOWEVER, FIT VERY WELL. LOCAL EVIDENCE, SUCH AS OLD BUILDING CORNERS, ETC. FIELD MEASURED BY SPALDING, DEDECKER APPEAR TO FIT THIS EXISTING POINT WITH A POSITIONAL TOLERANCE OF +/- 0.4' IN ALL QUADRANTS EXCEPT THE NORTHWEST 1/4 OF SECTION 17, WHICH SAYS THAT THIS POINT SHOULD BE 1.4' SOUTH OF ITS CURRENT POSITION. HOWEVER THE NORTHWEST 1/4 OF SECTION 17 IS COMPRISED OF THE "ADDITION TO MAPLEWOOD PARK SUB." (L.32, P.72) WHICH DOES NOT MATHEMATICALLY CLOSE BY 10' (SEE RESEARCH DOSSIER). WITH THIS IN MIND, ALL EXISTING KNOWN EVIDENCE ANALYZED FAVORS THE CORRECTNESS OF THIS POINT.

C. Description of monument for corner and accessories established to perpetuate locating the position of the corner:

C-5 CORNER COMMON TO SECTIONS 7, 8, 17, 18
FOUND BRASS DISK ATTACHED TO IRON IN MONUMENT BOX. SET 1/2" IRON ROD IN CONCRETE WITH WAYNE COUNTY REMONUMENTATION TAG AND LICENSE CAP NO. 38121 DIRECTLY ABOVE BRASS DISK. THIS LOCATION IS ACCEPTED BY MYSELF AND IS GENERALLY ACCEPTED BY PROFESSIONAL SURVEYORS AS THE BEST AVAILABLE EVIDENCE OF THE POSITION OF THE ORIGINAL CORNER.
AZ. 21° 88.49'; CUT "+" ON TOP OF CATCH BASIN RIM AT TOP OF CURB AT NE CORNER OF CATCH BASIN
AZ. 117° 105.48'; PK NAIL WITH WCR TAG IN NORTH FACE OF 6" LOCUST
AZ. 144° 52.75'; CUT "+" ON TOP OF CATCH BASIN RIM AT TOP OF CURB AT NE CORNER OF CATCH BASIN
AZ. 160° 148.11'; NW CORNER OF BUILDING #5540
AZ. 194° 150.57'; NE CORNER OF BUILDING #5539
AZ. 217° 52.19'; CUT "+" ON TOP OF CATCH BASIN RIM AT TOP OF CURB AT NE CORNER OF CATCH BASIN
AZ. 254° 117.57'; PK NAIL WITH WCR TAG IN NORTH FACE OF UTILITY POLE
AZ. 325° 67.06'; CUT "+" ON SE CORNER OF 6" GAS VALVE COVER

93 DEC -8 PM 1:41
FORESTER, YOUNG & SLOAN
REGISTER OF DEEDS
WAYNE COUNTY, MI

Signed by George M. Platz Date 12-3-93
Surveyor's Michigan License No. 38121

