

**SURVEY & REMONUMENTATION**

APR 05 1996

**LAND CORNER RECORDATION CERTIFICATE**  
Filing Requirement of Act 74, Mich. P.A. 1970

\$ 4.00 REMONUMENTATION

\$ 7.00 DEED

15 DEC 95 10:23 A.M. RECEI A

RECORDED

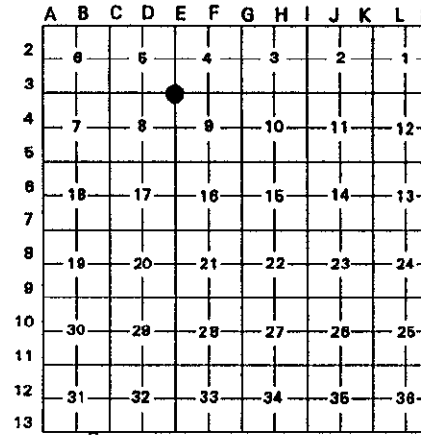
ROBERT E. YOUNGBLOOD, REGISTER EDS  
WAYNE COUNTY, MI

For corners in **COMMISSION**

LIBER 28465 PAGE 735

<u>WAYNE</u> (County)	Located In: Springwells Twp. City of Dearborn	Corner Code # E-3
1. Public Land Survey	T 2S R 11E	_____
	T _____ R _____	_____
	T _____ R _____	_____
	T _____ R _____	_____
2. Property Controlling in Section	S _____ T _____ R _____	_____
	S _____ T _____ R _____	_____
3. Miscellaneous Property in Sec.	S _____ T _____ R _____	_____
	S _____ T _____ R _____	_____
4. Lot No. _____, Recorded Plat _____		
5. Private Claims _____		

Compliance with ACT 345, P.A. 1990  
APPROVED ON: 12-11-95  
WAYNE COUNTY REMONUMENTATION  
PETER GROUP COMMITTEE  
Register of Deeds Stamp & File Number



I, George M. Platz, in a field survey on December 11, 19 95, do hereby certify that under requirements of P.A. 74, Michigan P.A. of 1970, the corner points mentioned in lines 1 and 2 above were in conformance with regulations and rules therefore as required in the current manual of survey instructions of the United States Department of the Interior, Bureau of Land Management or by a decree of a Court of Law and /or that the corner points mentioned in lines 3, 4 and 5 above were in conformance with the rules of the Michigan Board of Land Surveyors or by a Decree of a Court of Law; established, re-established, monumented, re-monumented, recovered, found as expressed below:

**NOTE: Not more than 4 corners, all in the same town and range, may be recorded on this certificate.**

A. Description of original monument and accessories and/or subsequent restoration:

E-3 T.2S.,R.11E. G.L.O. Notes Pg. 105 Joseph Fletcher 1800's Set Post  
T.2S.,R.11E. City of Dearborn Field Book 3-4 1934 Found Brass Plug in Conc

B. Description of corner evidence found and/or method applied in restoring or reestablishing corner:

E-3 No observable corner evidence was found at this location by Spalding DeDecker & Associates (SD&A). All recorded information on file with the Wayne County Register of Deeds; all obtainable survey information from the City of Dearborn Engineering Dept.; and any other obtained unrecorded survey information made available to SD&A is documented in the research dossier. This Section Corner was reset at record plat value based upon found monumentation and evidence field measured along the South line of Section 5 in "Robert Oakman Land Company's Aviation Field Sub. No. 1", which comprises a majority of the SE 1/4 of Section 1. The found monumentation located in the SW 1/4 of Section 4 fits this point with a position tolerance of 0.3'. The found monumentation located in the NW 1/4 of Section 9 fits this point very well considering the fact that the R.O.W. along Wyoming Ave. varies a great amount South of Warren Ave. The found monumentation in the NE 1/4 of Section 8, per the "Detroit Seamless Steel Tubes Co. Warren-Wyoming Sub.", appears to place this corner 0.9' South and 0.5' West of our computed location. However, City of Dearborn Survey notes from 1934 show angular values of all four quadrants at this intersection to match extremely well to current measured values based upon the location of this point by SD&A. See research dossier for analysis. With all the above considered, the existing known evidence favors the correctness of this point.

C. Description of monument for corner and accessories established to perpetuate locating the position of the corner:

E-3 Corner Common to Sections 4,5,8 and 9 of T.2S.,R.11E.  
Set 4"x 36" Concrete Monument w/Aluminum Disk stamped "WAYNE COUNTY REMONUMENTATION, SPALDING-DEDECKER, PS 38121" in a Monument Box Located in the Intersection of Warren Road and Wyoming Road.

- Az. 44° 60.29'; Set P.K. Nail w/WCR Tag in West Face of Concrete Light Pole Base.
- Az. 143° 56.65'; Punch Hole in Brass Disk in Handhole, City of Dearborn BM# 010-04-01
- Az. 233° 71.79'; Set P.K. Nail w/WCR Tag in North Face of Concrete Light Pole Base.
- Az. 332° 137.30'; Set P.K. Nail w/WCR Tag in South Face of Concrete Light Pole Base.

The Selected Location of this Section Corner is accepted by myself and is generally accepted by Professional Surveyors as the best available evidence of the position of the original corner.

Signed by George M. Platz Date 12-11-95  
Surveyor's Michigan License No. 38121

