

SURVEY & REMONUMENTATION

\$ 4.00 REMONUMENTATION

\$ 7.00 DEED

19 DEC 95 11:55 A.M.

RECEI

A

APR 05 1996

LAND CORNER RECORDATION CERTIFICATE
Filing Requirement of Act 74, Mich. P.A. 1970

RECORDED
FOREST E. YOUNGBLOOD, REGISTER
WAYNE COUNTY, MI

EDS

For corners in **COMMISSION**
Wayne

SEQUENCE # 2
LIBER 28471 PAGE 677

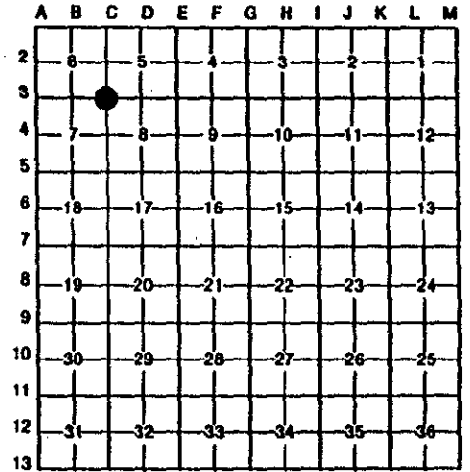
Compliance with
ACT 345, P.A. 1990

APPROVED ON: 12-12-95
WAYNE COUNTY REMONUMENTATION
PEER GROUP COMMITTEE

Register of Deeds Stamp & File Number

95271393

Located In:	Corner Code #
Van Buren 3S. 8E.	C-3
1. Public Land Survey	T ___ R ___
	T ___ R ___
	T ___ R ___
	T ___ R ___
2. Property Controlling in Section	S ___ T ___ R ___
	S ___ T ___ R ___
3. Miscellaneous Property in Sec.	S ___ T ___ R ___
	S ___ T ___ R ___
4. Lot No. _____, Recorded Plat _____	
5. Private Claims _____	



1. William Roskelly, in a field survey on December 5, 1995, do hereby certify that under requirements of P.A. 74, Michigan P.A. of 1970, the corner points mentioned in lines 1 and 2 above were in conformance with regulations and rules therefore as required in the current manual of survey instructions of the United States Department of the Interior, Bureau of Land Management or by a decree of a Court of Law and/or that the corner points mentioned in lines 3, 4 and 5 above were in conformance with the rules of the Michigan Board of Land Surveyors or by a Decree of a Court of Law; established, re-established, monumented, re-monumented, recovered, found as expressed below:

NOTE: Not more than 4 corners, all in the same town and range, may be recorded on this certificate.

A. Description of original monument and accessories and/or subsequent restoration:
C-3) Southeast corner section 6, T.3 S, R.8 E., Van Buren Township
 G.L.O. (1830's) J. Wampler set corner post, witnesses: Beech 25 N 33 W 13 (gone), Do 46 S 11 E 28 (gone).
 W.P.A. (1930's) found an iron, witnesses: N.W. 48.14 S. edge sign post (gone), N.W. 83.65 30" Maple (gone), N.E. 42.33 Ed. pole (gone), S.E. 63.91 24" Maple (gone), S.W. 46.44 16" Maple (gone).
 R.C. #790 L. 21320, P. 248 (11/25/81) Robert Pitts found a 1" iron pipe, witnesses: N. W. 53.62 to nail WCRC brass tag on S.E. side of DE pole (measured = 53.66), N. N. W. 71.36 to nail and WCRC brass tag on S. W. side of M.B.T. pole (measured = 71.42), N. N. E. 91.07 to nail WCRC brass tag on W. side of D.E. pole (gone), N. E. 48.39 to nail WCRC brass tag N. W. side D.E. pole (gone). WCRC (10/7/92) C. Whost found a 1/2" iron witnesses: N. 50° W. 53.63 WCRC tag D.E. pole (measured 53.66), N. 14° W. 71.42 MBT (measured = 71.42), S. 76° W. 38.55 "X" chisled in rim of gas shutoff (gone), S. E. 35.43 M.B.T. pole (gone), N. 50° E. unspecified in notes (gone).

B. Description of corner evidence found and/or method applied in restoring or reestablishing corner:
C-3) Southeast corner section 6, T.3 S, R.8 E., Van Buren Township
 Found a 1" iron pipe 1' below road surface at Old Ecorse and Denton Road (asphalt). Installed a monument box and cover. Verified corner location by comparing W.P.A. survey with field measurements:
 C-2 to C-3 Record = 2668.52 Measured = 2668.68
 C-3 to B-3 Record = 2690.04 Measured = 2689.85
 Angle line C-3 and B-3 to C-3 and B-3 Record = 89° 44' 10" Measured = 89° 44' 03"

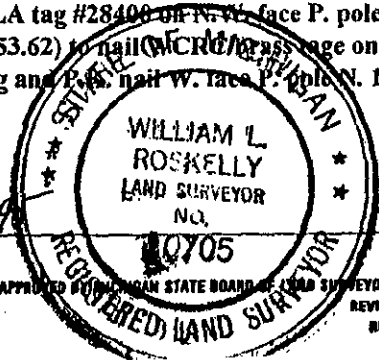
Additional support:
 Corner checked to R.C. #790 witness, N. W. 53.62 to nail WCRC brass tag on S.W. side of DE pole (measured = 53.66), N. N. W. 71.36 to nail and WCRC brass tag on S. W. side of M.B.T. pole (measured = 71.42).
 W.C.R.C. C. Whost N. 50° W. 53.63 WCRC tag D.E. pole (measured 53.66), N. 14° W. 71.42 MBT (measured = 71.42)

Description of monument for corner and accessories established to perpetuate locating the position of the corner:
C-3) Southeast corner section 6, T.3 S, R.8 E., Van Buren Township
 Found a 1" iron pipe 1' below road surface at Old Ecorse and Denton Road (asphalt). Installed a monument box and cover. The selected location is accepted by the contractor and is generally accepted by professional surveyors as the best available evidence of the position of the corner.

WITNESSES:
 Found WCRC tag and P.K. N.W. face P. pole N. 40° E. distance = 43.18, Found nail GLA tag #28400 on N.W. face P. pole N. 40° E. distance = 43.18, Set steel bar S. 25° E. distance 46.62, Found N. W. 53.66 (record = 53.62) to nail WCRC brass tag on S.W. side of DE pole distance = 53.66, Set steel bar S. 60° E. distance 49.89, Found WCRC tag and P.K. N.W. face P. pole N. 16° W. distance = 71.42 (record = 71.36)
 Placed Wayne County Remonumentation brass marker and cap #10705

signed by William L. Roskelly
 Surveyor's Michigan License No. 10705

Date 12-11-95



4R
7D
P.J.