

FEB 28 1994

LAND CORNER RECORDATION CERTIFICATE
Filing Requirement of Act 74, Mich. P.A. 1970

LI 27015 PA 726

For corners in COMMISSION

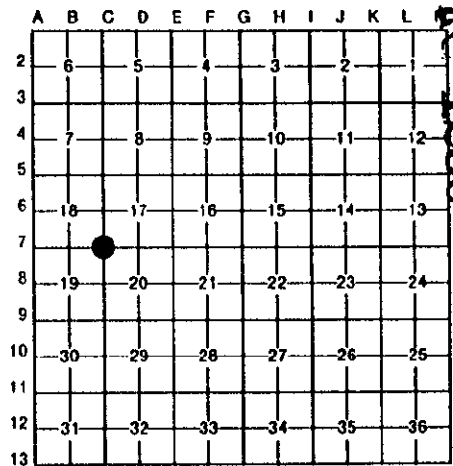
Wayne <small>(County)</small>	Located In:	Corner Code #
1. Public Land Survey	T 3 S R 8 E.	C-7
	T _____ R _____	_____
	T _____ R _____	_____
	T _____ R _____	_____
2. Property Controlling in Section	S _____ T _____ R _____	_____
	S _____ T _____ R _____	_____
3. Miscellaneous Property in Sec.	S _____ T _____ R _____	_____
	S _____ T _____ R _____	_____
4. Lot No. _____, Recorded Plat _____		
5. Private Claims _____		

Compliance with
ACT 345, P.A. 1990

APPROVED ON: 12-7-93 *DBJ*
WAYNE COUNTY REMONUMENTATION
PEER GROUP COMMITTEE

Register of Deeds Stamp & File Number

I, William L. Roskelly in a field survey on November 3, 1993, do hereby certify that under requirements of P.A. 74, Michigan P.A. of 1970, the corner points mentioned in lines 1 and 2 above were in conformance with regulations and rules therefore as required in the current manual of survey instructions of the United States Department of the Interior, Bureau of Land Management or by a decree of a Court of Law and/or that the corner points mentioned in lines 3, 4 and 5 above were in conformance with the rules of the Michigan Board of Land Surveyors or by a Decree of a Court of Law, established, re-established, monumented, re-monumented, recovered, found as expressed below:



NOTE: Not more than 4 corners, all in the same town and range, may be recorded on this certificate.

A. Description of original monument and accessories and/or subsequent restoration:

No G.L.O. Witnesses remain. J. Wampler G.L.O. (1819) set temporary post.
W.P.A. iron set. Witnesses:
Guy Pole N.E. 49.50' (gone)
30" Oak N.W. 86.35' "
36" Maple N.W. 66.40' "
Tel. Pole S.W. 47.57' "
PWR Pole S.E. 31.30' "

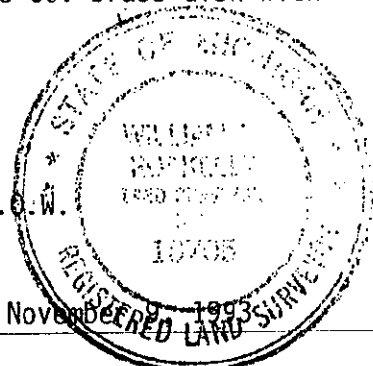
B. Description of corner evidence found and/or method applied in restoring or reestablishing corner:

Found concrete monument steel bar located at c/1 Old Dentol & 36' North of Service Drive
Verified using legal description of property number 83078990008 from Van Buren Tax
Assessment. Distance from C-7 to capped iron #21584 calculated 389.045, measured 389.47.

C. Description of monument for corner and accessories established to perpetuate locating the position of the corner:
C-7" Sec. corner 17,18,19 & 20, T.3 S.R.8 E. Found conc. mon. steel bar. The selected location is accepted by the Contractor and is generally accepted by professional surveyors as the best available evidence of the position of the original corner. Placed Wayne Co. brass disk with license #10705.

- Set PK nail & Tag 10705 in seam of I-94 Xway N. 10° E. dist. 79.43
- Set WCR Tag N.W. face P. Pole S. 70° E. dist. 33.00
- Set WCR tag top of guard rail post S. 15° W. dist. 11.70
- Center seam of I-94 Service Drive due South 36.00
- Set WCR Tag S. face 8" Pine N. 70° W. dist. 31.13
- Found cap iron OHM, KSW #21584 at N.W. corner of cemetery on 33' R. & W. S. 5° E. dist. 389.47

Signed by William L. Roskelly Date November 3, 1993
Surveyor's Michigan License No. 0705



2R 11KD

RECEIVED
 12-7-93
 10:11 AM