

FEB 28 1994

LAND CORNER RECORDATION CERTIFICATE
Filing Requirement of Act 74, Mich. P.A. 1970

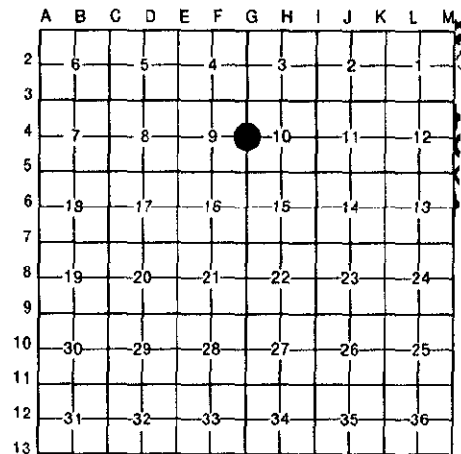
For corners in
WAYNE COUNTY
(County)

| | Located In: | Corner Code ## |
|------------------------------------|-------------------------|----------------|
| 1. Public Land Survey | T <u>3S</u> R <u>8E</u> | <u>G4</u> |
| | T _____ R _____ | _____ |
| | T _____ R _____ | _____ |
| | T _____ R _____ | _____ |
| 2. Property Controlling in Section | S _____ T _____ R _____ | _____ |
| | S _____ T _____ R _____ | _____ |
| 3. Miscellaneous Property in Sec. | S _____ T _____ R _____ | _____ |
| | S _____ T _____ R _____ | _____ |

Compliance with
ACT 345, P.A. 1990
APPROVED ON: 12-21-93
WAYNE COUNTY REMONUMENTATION
PEER GROUP COMMITTEE

Register of Deeds Stamp & File Number

4. Lot No. _____, Recorded Plat _____
5. Private Claims _____



I, RAPHAEL LANDINI, in a field survey on DECEMBER 15, 19 93, do hereby certify that under requirements of P.A. 74, Michigan P.A. of 1970, the corner points mentioned in lines 1 and 2 above were in conformance with regulations and rules therefore as required in the current manual of survey instructions of the United States Department of the Interior, Bureau of Land Management or by a decree of a Court of Law and/or that the corner points mentioned in lines 3, 4 and 5 above were in conformance with the rules of the Michigan Board of Land Surveyors or by a Decree of a Court of Law; established, re-established, monumented, re-monumented, recovered, found as expressed below:

NOTE: Not more than 4 corners, all in the same town and range, may be recorded on this certificate.

A. Description of original monument and accessories and/or subsequent restoration:

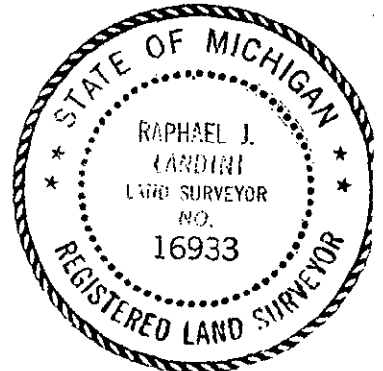
| | | | | | |
|----------------------|----|------|-------|--------|--------|
| G.L.O. | | | | | |
| W. OAK | 19 | S39E | 54 | (35.6) | (GONE) |
| DO | 23 | N33W | 36 | (23.8) | (GONE) |
| WPA (1930S) BOLT SET | | | | | |
| TRI CHERRY | | NE | 96.44 | | (GONE) |
| 18" CHERRY | | SE | 86.11 | | (GONE) |
| FENCE CORNER | | W | 51.52 | | (GONE) |
| 5" OAK | | NW | 54.67 | | (GONE) |

B. Description of corner evidence found and/or method applied in restoring or reestablishing corner:

| | | | | | |
|---|-----|-------|--|--------|--------|
| WAYNE COUNTY ROAD COMMISSION MON. IN BOX 1970 | | | | | |
| TOP HYDRANT | NE | 67.54 | | (MEAS. | 67.79) |
| TEL POLE | SE | 50.90 | | (GONE) | |
| TEL POLE | SW | 74.07 | | (GONE) | |
| TEL POLE | WSW | 41.41 | | (MEAS. | 41.52) |

C. Description of monument for corner and accessories established to perpetuate locating the position of the corner:
FOUND 1/2" IRON ROD SET ABOVE CONC. MONUMENT IN MON. BOX; SET REMONUMENTATION DISK WITH CAP RJL RLS. 16933 SELECTED LOCATION IS ACCEPTED BY THE CONTRACTOR AND IS GENERALLY ACCEPTED BY PROFESSIONAL SURVEYORS AS THE BEST AVAILABLE EVIDENCE OF THE POSITION OF THE ORIGINAL CORNER.

| | | |
|------------------------------|-------|-------|
| SET WCR TAG SE SIDE 16" TREE | N47°E | 77.69 |
| CENTER HYDRANT | N52°E | 67.79 |
| SET WCR TAG SE SIDE TEL POLE | S60°E | 41.52 |
| SET WCR TAG SW SIDE 24" TREE | S22°E | 82.44 |
| SET WCR TAG SW SIDE 36" TREE | N53°W | 54.50 |



93 DEC 22 AM 10:20
FOREST E. YOUNGBLOOD
REGISTER OF DEEDS
WAYNE COUNTY, MI

Signed by Raphael J. Landini Date DECEMBER 17, 1993

Surveyor's Michigan License No. 16933

2R
11K D