

DEC 29 1998

MAR 02 1999

FILE DO NOT MAIL

LAND CORNER RECORDATION CERTIFICATE

Filing Requirement of Act 74, Mich. P.A. 1970

\$10.00 DEED \$4.00 REMONUMENTATION

For corners in

Wayne, Van Buren Twp. Located In: Corner Code #

Table with 3 columns: Survey Type, Located In (T/S), and Corner Code #. Includes entries for Public Land Survey, Property Controlling in Section, and Miscellaneous Property in Sec.

RECORDED FOREST E. YOUNGBLOOD, REGISTER OF DEEDS WAYNE COUNTY, MI Receipt #101860

Compliance with ACT 345, P.A. 1990

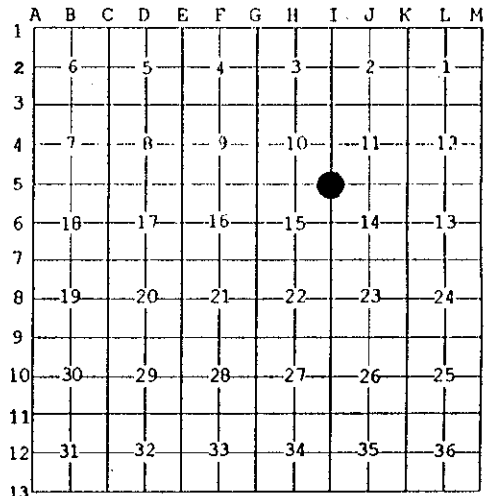
APPROVED ON: 12-16-98 WAYNE COUNTY REMONUMENTATION PEER GROUP COMMITTEE

Register of Deeds Stamp & File Number

4. Lot No. Recorded Plat 5. Private Claims

William L. Roskelly, in a field survey on Oct 28, 1998, do hereby state that under requirements of P.A. 74, Michigan P.A. of 1970, the corner points mentioned in lines 1 and 2 above were in conformance with regulations and rules therefore as required in the current manual of survey instructions of the United States Department of the Interior, Bureau of Land Management or by a decree of a Court of Law and/or that the corner points mentioned in lines 3, 4 and 5 above were in conformance with the rules of the Michigan Board of Land Surveyors or by a Decree of a Court of Law, established, re-established, monumented, recovered, found as expressed below:

NOTE: Not more than 2 corners, all in the same town and range, may be recorded on this certificate.



A. Description of original monument and accessories and/or subsequent restoration:

I-5 Southwest corner section 11, T.3 S., R.8 E., Van Buren Township G.L.O. (1830's) Joseph Fletcher set corner post, witnesses: Ash 9N87 W4 (gone), Lynn 9S48 E12 (gone) W.P.A. (1930's) stone, witnesses: NE 13.01' Ed. pole (gone), NE 101.33' 8" bldg cor. (gone), SW 53.46' 24" Elm (gone), NW 56.39' Tel. pole (gone), NW 82.21' 6" Elm (gone). WCRC 4/24/70 E. Johns iron, witnesses: NW 50.50 nail MBT guy pole (gone), NE 48.13' nail in DE pole (M.=48.51'), SE 70.96' nail in DE pole (gone), SW 64.05' nail in DE pole (gone). WCRC 1/29/87 R Landini found 1/2" iron rod with cap, witnesses: NW 50.61' found PK nail MBT guy pole (gone), NE 48.51' PK nail brass tag DE pole (M.=48.51), SE 68.42' PK nail brass tag DE pole (M.=68.50), SW 63.79' PK nail in brass tag MBT pole (gone). 4/23/93 LCRC L. 26493. P. 021 William G. Carlson found a 1/2" iron in a mon. box, witnesses: 48.50' NW to found PK nail w/washer WCRC NW face of utility pole (M.=48.51), 68.43' SE to found PK nail w/washer WCRC NE face utility pole (M.=68.50), (see other side)

B. Description of corner evidence found and/or method applied in restoring or reestablishing corner.

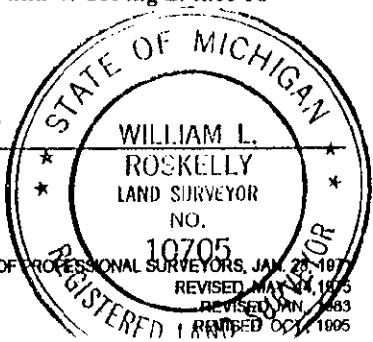
I-5 Southwest corner section 11, T.3 S., R.8 E., Van Buren Township Found a concrete monument with steel bar in a monument box at the intersection of Morton Taylor and Tyler Roads (asphalt). Verified corner location by comparing W.P.A. data with field measurements: I-5 to I-4 Record = 2659.13' Measured = 2661.36', I-5 to I-6 Record = 2684.85' Measured = 2683.28' Angle line I-5 & I-4 to I-5 & J-5 Record = 89°-42'-15" Measured = 89°-40'-02" WCRC 4/24/70 E. Johns iron, witness: NE 48.13' nail in DE pole (M.=48.51'), WCRC 1/29/87 R Landini witness: NE 48.51' PK nail brass tag DE pole (M.=48.51), SE 68.42' PK nail brass tag DE pole (M.=68.50), 4/23/93 LCRC L. 26493. P. 021 William G. Carlson PK nail w/washer WCRC NW face of utility pole (M.=48.51), 68.43' SE to found PK nail w/washer WCRC (M.=68.50), 61.74' SW to found PK nail w/washer NW face of u. pole (M=61.86'). Found concrete monument with steel bar NE sub corner "Charter Club Estates Sub.", L. 110, P. 85-89, R=60.00' S. of section line M=60.01', R=60.00' W. of section line M=60.00'.

C. Description of monument for corner and accessories established to perpetuate locating the position of the corner:

I-5 Southwest corner section 11, T.3 S., R.8 E., Van Buren Township Found a concrete monument with steel bar in a monument box at the intersection of Morton Taylor and Tyler Roads (asphalt). The selected location is accepted by the contractor and is generally accepted by professional surveyors as the best available evidence of the position of the corner. WITNESSES: Found P.K. nail, tag WCRC W. face power pole M.=N. 31° 22' 27" E. 48.51', Found P.K. nail W. face power pole M.=N. 31° 27' 25" E 48.60', Found P.K. N.E. face power pole M.=S. 42° 58' 35" E 68.50', Found P.K. nail, tag #19837 NW face power pole M.=S. 42° 15' 22" E 67.86', Found P.K. nail tag WCRC N.W. face power pole M.=S. 33° 15' 07" W. 61.86', Found concrete mon. steel bar M.=S. 45° 29' 06" W. 84.91, Set nail and WCR tag S. face 18" Elm M.=N. 62° 26' 00" W. 98.69', Set steel bar cap #10705 M.=N. 34° 13' 42" W. 41.76. Placed Wayne County Remonumentation brass marker and cap #10705.

Signed by [Signature] Surveyor's Michigan License No. 10705

Date DEC 28, 1998



R LCR 10 4 R 2 PG U DRJ

Vertical text on the right margin: LIBER-20005, 9845857113, 12/29/1998 11:54AM

SURVEY &
REMONUMENTATION

MAR 02 1999

SECTION

1-5 Southwest corner section 11, T.3 S., R.8 E., Van Buren Township (continued from part "a" side 1)
61.74' SW to found PK nail w/washer NW face of u. pole (M=61.86').

11881-0000

01007-0000