

APR 05 1996

COMMISSION

LAND CORNER RECORDATION CERTIFICATE

Filing Requirement of Act 74, Mich. P.A. 1970

\$ 4.00 REMONUMENTATION

\$ 7.00 DEED

19 DEC 95 11:55 A.M.

RECEI

A

RECORDED

FOREST E. YOUNGBLOOD, REGISTER

EDS

WAYNE COUNTY, MI

For corners in Wayne

(County)

Located In: Van Buren Corner Code #

	3S.	8E.	I-9
1. Public Land Survey	T	R	
	T	R	
	T	R	
	T	R	
2. Property Controlling in Section	S	T	R
	S	T	R
3. Miscellaneous Property in Sec.	S	T	R
	S	T	R

LIBER 28471 PAGE 679

Compliance with ACT 345, P.A. 1990

APPROVED ON: 12-12-95 WAYNE COUNTY REMONUMENTATION PEER GROUP COMMITTEE

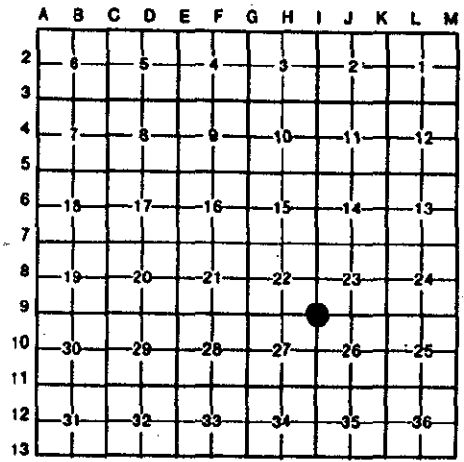
Register of Deeds Stamp & File Number

95271395

- 4. Lot No. _____, Recorded Plat _____
- 5. Private Claims _____

William Roskelly, in a field survey on October 20, 1995, do hereby certify that under requirements of P.A. 74, Michigan P.A. of 1970, the corner points mentioned in lines 1 and 2 above were in conformance with regulations and rules therefore as required in the current manual of survey instructions of the United States Department of the Interior, Bureau of Land Management or by a decree of a Court of Law and/or that the corner points mentioned in lines 3, 4 and 5 above were in conformance with the rules of the Michigan Board of Land Surveyors or by a Decree of a Court of Law; established, re-established, monumented, re-monumented, recovered, found as expressed below:

NOTE: Not more than 4 corners, all in the same town and range, may be recorded on this certificate.



A. Description of original monument and accessories and/or subsequent restoration:

I-9) Southwest corner section 23, T.3 S. R.8 E., Van Buren Township

G.L.O. (1830's) J. Wampler Set post, Lynn 24 N65 W9 (gone), Beech 11 S66, E20 (gone)

W.P.A. (1930's) found a stone, witnesses: Sub. iron W. 33.05 (measured 33.02), NW 66.82 pole (gone), NW 88.55 6" Elm (gone), NW 89.04 16" W. Cherry (gone), NE 32.31 Ed. pole (gone), SE 106.76 Ed. pole (gone), SE 18.12 iron (gone).

WCRC 3/11/75 J. Canning found a 1/2" iron pipe witnesses: SW 87.93 foundation corner #13392 (measured 87.97), SW 108.42 foundation corner #13392 (measured 108.36), E. 33 iron (gone), NE nail NW side 14" Elm (gone), W. 33.05 iron (measured 33.02) No R.C.'s or C.S.'s found on file at Wayne County Register of Deeds.

B. Description of corner evidence found and/or method applied in restoring or reestablishing corner:

I-9) Southwest corner section 23, T.3 S. R.8 E., Van Buren Township

Found 1/2" iron pipe bent in Martinsville Road gravel. Replaced corner marker with a steel bar.

Verified the corner location by comparing WPA data with field measurements.

I-9 to I-8 Record = 2663.14 Measured = 2663.81

I-9 to I-10 Record = 2674.96 Measured = 2674.30

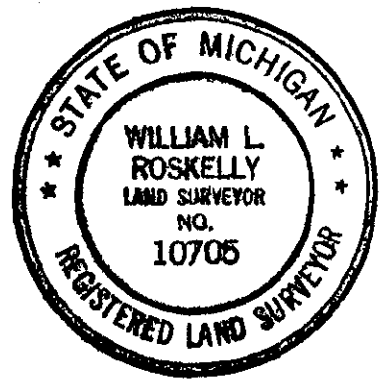
Angle line I-9 and I-8 to I-9 and I-10 Record = 179° 59' 50" Measured = 179° 58' 59"

Also verify section corner thru W.C.R.C. Witnesses:

Found S.E. corner house #13392 at concrete foundation S. 62° W. distance = 108.36 +/-

Found N.E. corner house #13392 at concrete foundation S. 82° W. distance = 87.97 +/-

Found an iron pipe due West distance = 33.02 +/-



C. Description of monument for corner and accessories established to perpetuate locating the position of the corner:

I-9) Southwest corner section 23, T.3 S. R.8 E., Van Buren Township

Found 1/2" iron pipe bent in Martinsville Road gravel. Replaced corner marker with a steel bar.

The selected location is accepted by the contractor and is generally accepted by professional surveyors as the best available evidence of the position of the corner.

WITNESSES:

Set nail and WCR tag NW face 11" Elm N. 50° E. distance = 49.89 Set nail and WCR tag North face 12" Elm S. 80° E. distance = 35.56 Set nail and WCR tag S.E. face 13" Norway Maple S. 45° W. distance = 65.97 Found S.E. corner house #13392 at concrete foundation S. 62° W. distance = 108.36 Found N.E. corner house #13392 at concrete foundation S. 82° W. distance = 87.97 Found iron pipe due West distance = 33.02 Set nail and WCR tag N.E. face 15" Silver Maple Cluster N. 55° W. distance = 76.03

Placed Wayne County Remonumentation brass marker and cap #10705

Signed by [Signature] Date 12-14-95

Surveyor's Michigan License No. 10705