

APR 05 1996

LAND CORNER RECORDATION CERTIFICATE

COMMISSION Filing Requirement of Act 74, Mich. P.A. 1976

\$ 4.00 REMONUMENTATION
\$ 7.00 DEED

19 DEC 95 11:56 A.M. RECEI
RECORDED
FOREST E. YOUNGBLOOD, REGISTER
WAYNE COUNTY, MI

For corners in
Wayne
(County)

Located In: Van Buren Corner Code #

LIBER 28471 PAGE 681

Compliance with
ACT 345, P.A. 1990

APPROVED ON: 12-12-95
WAYNE COUNTY REMONUMENTATION
PEER GROUP COMMITTEE

Register of Deeds Stamp & File Number

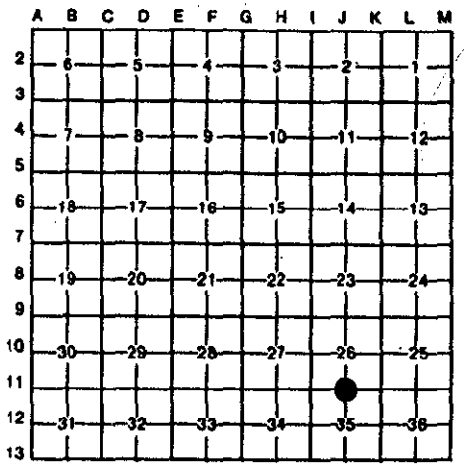
95271397

1. Public Land Survey	T	3S	R	8E	J-11
	T		R		
	T		R		
	T		R		
2. Property Controlling in Section	S		T		R
	S		T		R
3. Miscellaneous Property in Sec.	S		T		R
	S		T		R

4. Lot No. _____, Recorded Plat _____
5. Private Claims _____

I, William Roskelly, in a field survey on December 6, 19 95, do hereby certify that under requirements of P.A. 74, Michigan P.A. of 1970, the corner points mentioned in lines 1 and 2 above were in conformance with regulations and rules therefore as required in the current manual of survey instructions of the United States Department of the Interior, Bureau of Land Management or by a decree of a Court of Law and/or that the corner points mentioned in lines 3, 4 and 5 above were in conformance with the rules of the Michigan Board of Land Surveyors or by a Decree of a Court of Law, established, re-established, monumented, re-monumented, recovered, found as expressed below:

NOTE: Not more than 4 corners, all in the same town and range, may be recorded on this certificate.



A. Description of original monument and accessories and/or subsequent restoration:

J-11 North corner section 35, T.3 S., R.8 E., Van Buren Township
G.L.O. (1830's) J. Wampler set post, no witnesses.
W.P.A. (1930's) set an iron, witnesses: W 27.42 16" Elm (gone), NE 45.01 16" Elm (gone), SE 74.28 Tel. pole (gone),
W.C.R.C. (1970) found an iron, witnesses: W. 27.42 16" Elm (gone), NE 45.01 16" Elm (gone), SE 74.28 Tel. pole (gone).
No R.C.'s or C.S.'s found on file at Wayne County Register of Deeds.

B. Description of corner evidence found and/or method applied in restoring or reestablishing corner:

J-11 North corner section 35, T.3 S., R.8 E., Van Buren Township
Found an iron pipe with survey nail natural ground along wire fence.
Verified the position of the corner by comparing W.P.A. survey with field measurements.
J-11 to I-11 Record = 2685.87 Measured = 2685.42
I-11 to I-12 Record = 2663.52 Measured = 2663.67
I-12 to J-12 Record = 2695.87 Measured = 2695.80
J-12 to J-11 Record = 2647.81 Measured = 2647.73
Angle line I-11 and J-11 to I-11 and I-12 Record = 90° 50' 20" Measured = 90° 48' 49"
Angle line I-12 and I-11 to I-12 and J-12 Record = 89° 26' 30" Measured = 89° 27' 01"
Angle line J-12 and I-12 to J-12 and J-11 Record = 90° 20' 27" Measured = 90° 19' 28"
Angle line J-11 and J-12 to J-11 and I-11 Record = 89° 22' 43" Measured = 89° 24' 42"



C. Description of monument for corner and accessories established to perpetuate locating the position of the corner:

J-11 North corner section 35, T.3 S., R.8 E., Van Buren Township
Found an iron pipe with survey nail natural ground along wire fence.
The selected location is accepted by the contractor and is generally accepted by professional surveyors as the best available evidence of the position of the corner.
WITNESSES:
Found P.K. nail West face fence post due North distance = 22.30 Set nail and WCR tag West face 8" Hickory N. 10° E. distance = 16.68 Found P.K. nail dead 7" and 12" Twin Black Cherry N. 15° E. distance = 4.69 Found survey nail/traverse point N. 80° E. distance = 76.34 Found P.K. nail N.W. face 7" Hickory S. 20° W. distance = 22.98
Set nail and WCR tag N.W. face 7" Hickory S. 20° W. distance = 22.99 Found P.K. nail North face 20" Black Cherry N. 78° W. distance = 34.90 Set nail and WCR tag North face 20" twin Blackberry N. 78° W. distance = 35.01
Placed Wayne County Remonumentation brass marker and cap #10705

Signed by William Roskelly
Surveyor's Michigan License No. 10705

Date 12-14-95

4R
7D