

FEB 28 1994

LAND CORNER RECORDATION CERTIFICATE
Filing Requirement of Act 74, Mich. P.A. 1970

For corners in COMMISSION

Wayne (County) Located In: Corner Code #

- 1. Public Land Survey T 3 S R 8 E. K-7
T ___ R ___
T ___ R ___
T ___ R ___
- 2. Property Controlling S ___ T ___ R ___
in Section S ___ T ___ R ___
- 3. Miscellaneous S ___ T ___ R ___
Property in Sec. S ___ T ___ R ___

Compliance with ACT 345, P.A. 1990

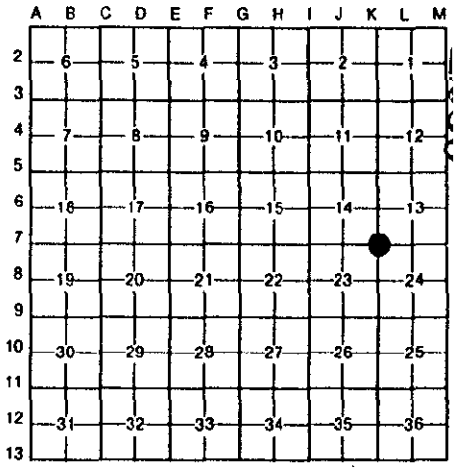
APPROVED ON: 12-7-93
WAYNE COUNTY REMONUMENTATION
PEER GROUP COMMITTEE

Register of Deeds Stamp & File Number

- 4. Lot No. _____, Recorded Plat _____
- 5. Private Claims _____

William L. Roskelly in a field survey on November 9, 1993, do hereby certify that under requirements of P.A. 74, Michigan P.A. of 1970, the corner points mentioned in lines 1 and 2 above were in conformance with regulations and rules therefore as required in the current manual of survey instructions of the United States Department of the Interior, Bureau of Land Management or by a decree of a Court of Law and/or that the corner points mentioned in lines 3, 4 and 5 above were in conformance with the rules of the Michigan Board of Land Surveyors or by a Decree of a Court of Law; established, re-established, monumented, re-monumented, recovered, found as expressed below:

NOTE: Not more than 4 corners, all in the same town and range, may be recorded on this certificate.



A. Description of original monument and accessories and/or subsequent restoration:

No G.L.O. Witnesses remain. J. Wampler G.L.O. (1819) set corner post witness: Hickory 23-S86 E9 Ash 10 S13W11
CS L. 18442, P. 559 & 560 on 5/24/73 Robert Campbell found a monument and recorded the following witnesses:
S. 25.97' P.K./M.D.S.H. Tag E. side Quad. 14" Butternut
N.W. 32.53' P.K. S. side 18" Boxelder
W.N.W. 63.48' P.K. N.E. side D.E. pole
S.E. 65.54' set p.K. N.E. side 10" Hickory

B. Description of corner evidence found and/or method applied in restoring or reestablishing corner:

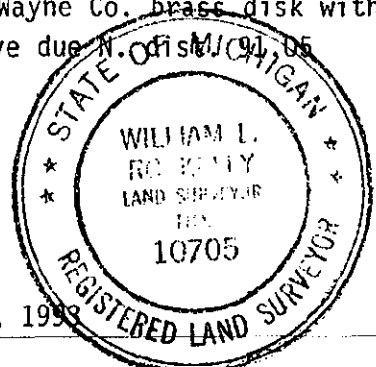
Found concrete monument with steel bar
Verified section corner thru recorded document RC. 233 L. 18442, Pg. 557
S. 25.97 PK/MDSH Tag E. side 14" Butternut found tree-no tag meas. 25± to tree see #4 below
N.W. 32.53 PK/S.side 18" Boxelder tree gone meas. 32.50 to existing stump
S.E. 65.54 PK N.E. side 10" Hickory - found tree-no PK found meas. 65.92 to new tag see #3

C. Description of monument for corner and accessories established to perpetuate locating the position of the corner:

K-7: Section corner 13,14,23 & 24 T.3 S.R.8 E. found concrete monument with steel bar. The selected location is accepted by the Contractor and is generally accepted by professional surveyors as the best available evidence of the position of the original corner. Placed Wayne Co. brass disk with license #10705
Plus in road station 869+00 at South edge of South I-94 service drive due N. of disk
Set WCR Tag North face P. pole N. 90° E. dist. 97.47
Set WCR Tag North face 12" Hickory S. 55° E. dist. 65.92
Set WCR Tag East face Quad 18" Butternut due South dist. 25.46
Set WCR Tag East face P. pole N. 35° W. dist. 95.35

Signed by William L. Roskelly
Surveyor's Michigan License No. 10705

Date November 9, 1993



2K 11KD