

FEB 28 1994

LI 27033 PA 875

COMMISSION

LAND CORNER RECORDATION CERTIFICATE
Filing Requirement of Act 74, Mich. P.A. 1970

For corners in

Table with columns: WAYNE (County), Located In: CITY OF TAYLOR, Corner Code: C-3. Rows include Public Land Survey, Property Controlling in Section, and Miscellaneous Property in Sec.

Compliance with ACT 345, P.A. 1990
APPROVED ON: 11-30-93 [Signature]
WAYNE COUNTY REMONUMENTATION PEER GROUP COMMITTEE

RC 1292

- 4. Lot No.
5. Private Claims

I, E. PATRICK O'ROURKE, in a field survey on NOVEMBER 30, 1993, do hereby certify that under requirements of P.A. 74, Michigan P.A. of 1970, the corner points mentioned in lines 1 and 2 above were in conformance with regulations and rules therefore as required in the current manual of survey instructions of the United States Department of the Interior, Bureau of Land Management or by a decree of a Court of Law and/or that the corner points mentioned in lines 3, 4 and 5 above were in conformance with the rules of the Michigan Board of Land Surveyors or by a Decree of a Court of Law; established, re-established, monumented, re-monumented, recovered, found as expressed below:

NOTE: Not more than 4 corners, all in the same town and range, may be recorded on this certificate.

A. Description of original monument and accessories and/or subsequent restoration:

G.L.O. (1815-1816) DESCRIPTION OF CORNER NOT STATED IN NOTES.

WITNESSES: POPLA 6 S27W 17 (11.22') (GONE)
CHERRY TREE 6 N41E 33 (21.78') (GONE)

W.P.A. (1930's) - FOUND IRON (#37)

WITNESSES: NE'LY 38.00' NAIL NW SIDE TEL POLE (GONE)
SE'LY 84.50' MON. (GONE)
SW'LY 37.13' CROSS N'LY COR SIGN P. (GONE)
NW'LY 75.27' WATER M.H. (GONE)
NW'LY 82.32' HYDRANT (GONE)

B. Description of corner evidence found and/or method applied in restoring or reestablishing corner:

DISTANCE TO C2 MEASURED AS 2683.16'; RECORD W.P.A. (1930) DISTANCES OF 2683.20' AND 2682.85';
DISTANCE TO D3 MEASURED AS 2618.50'; RECORD W.P.A. (1930) DISTANCES OF 2618.05' AND 2618.44';
DISTANCE TO C4 (BOX ONLY) MEASURED AS 2632.35'; RECORD W.P.A. (1930) DISTANCES OF 2632.68' AND 2633.22';
DISTANCE TO B3 TRAVERSED AS 2636.81'; RECORD W.P.A. (1930) DISTANCES OF 2636.51' AND 2636.01';

L.18272 P.287 (C.S.) - NO DESCRIPTION OF CORNER C-3 ON C.S. (1972)
NO WITNESSES SHOWN ON SAID C.S.

L.18956 P.711 (C.S.) - FOUND MON. (1974)
NO WITNESSES SHOWN ON SAID C.S.

(CONTINUED ON OTHER SIDE)

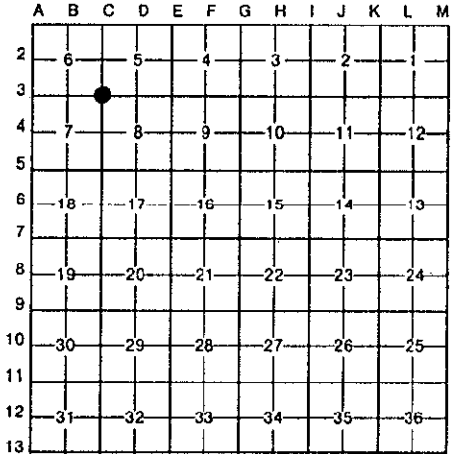
C. Description of monument for corner and accessories established to perpetuate locating the position of the corner:

C-3 SECTION CORNER 5, 6, 7, & 8, T3S, R10E.

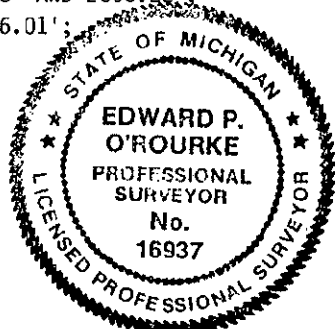
FOUND 1/2" IRON PIPE IN HANDHOLE ROAD BOX AT BEECH DALY AND ECORSE ROADS AND IT IS ACCEPTED AS A CAREFUL AND FAITHFUL PERPETUATION OF THE POSITION OF THE ORIGINAL CORNER.

WITNESSES: N 46°58'E 66.32' FOUND NAIL IN BRASS TAG ON W SIDE OF UTILITY POLE
S 50°56'E 64.08' SET NAIL IN SHINER ON SW SIDE OF UTILITY POLE
S 47°43'W 82.44' FOUND NAIL IN BRASS TAG ON NW SIDE OF DEADMAN POLE (SUPRA)
N 62°51'W 71.30' SET NAIL IN SHINER ON SW SIDE OF DE LIGHT POLE

PLACED A REMONUMENTATION BRASS DISC AND CAP #16937 ON ABOVE FOUND 1/2" IRON PIPE C3.



FILED 13 PM 5:23



Signed by [Signature]
E. PATRICK O'ROURKE
Surveyor's Michigan License No. 16937

Date NOVEMBER 30, 1993

12/13/93 35696 DEED 14.00
 12/13/93 35696 REMO FEE 2.00

FILE DO NOT MAIL

SECTION B (CONTINUED)

L.19097 P.725 & 726 (C.S.) - FOUND IRON PIPE (1978)
 S. 60°E 63.80' W.C.R.C. NAIL & CAP IN NE SIDE DE POLE (MEAS. 64.35')
 S. 58°W 76.01' W.C.R.C. NAIL & CAP IN NW SIDE GUY POLE (GONE)
 N. 65°W 69.65' M.D.S.H. NAIL & CAP IN SW SIDE LIGHT POLE (GONE)

L.19097 P.728 - FOUND IRON IN HANDHOLE (1975)
 SAME WITNESSES AS L.19097 P.725 & 726 (C.S.) ABOVE

L.21023 P.901 (C.S.) - FOUND IRON PIPE (1980)
 SAME WITNESSES AS L.19097 P.728 ABOVE

L.20952 P.564 - REPLACED MISSING IRON WITH 1/2" x 18" IRON PIPE (1980)
 SAME WITNESSES AS L.19097 P.728 ABOVE

L.23751 P.511 - FOUND IRON PIPE IN MONUMENT BOX (1988)
 N. 47°E 66.63' P.K. NAIL IN NW SIDE UTILITY POLE (MEAS. 66.56')
 S. 52°E 63.89' NAIL IN CAP NE SIDE UTILITY POLE (MEAS. 64.35')
 S. 49°W 82.57' NAIL IN CAP NW SIDE DEADMAN POLE (MEAS. 82.44')
 N. 63°W 69.68' NAIL IN CAP SW SIDE DE LIGHT POLE (GONE)