

FEB 28 1994

COMMISSION

LAND CORNER RECORDATION CERTIFICATE
Filing Requirement of Act 74, Mich. P.A. 1970

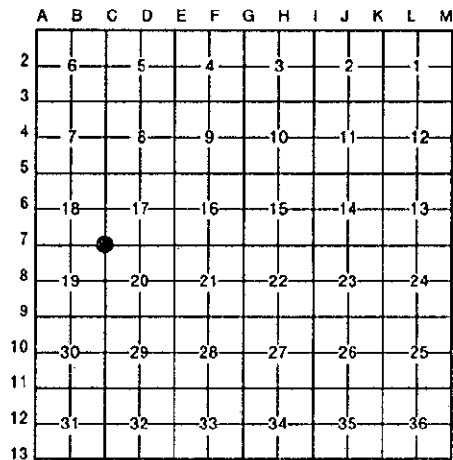
For corners in

Table with columns: WAYNE (County), Located In: CITY OF TAYLOR, Corner Code #, and survey details for Public Land Survey, Property Controlling in Section, and Miscellaneous Property in Sec.

Compliance with ACT 345, P.A. 1990. APPROVED ON: 11-30-93. WAYNE COUNTY REMONUMENTATION PEER GROUP COMMITTEE. Register of Deeds Stamp & File Number. RC 1293

4. Lot No. , Recorded Plat
5. Private Claims

I, E. PATRICK O'ROURKE, in a field survey on NOVEMBER 30, 1993, do hereby certify that under requirements of P.A. 74, Michigan P.A. of 1970, the corner points mentioned in lines 1 and 2 above were in conformance with regulations and rules therefore as required in the current manual of survey instructions of the United States Department of the Interior, Bureau of Land Management or by a decree of a Court of Law and/or that the corner points mentioned in lines 3, 4 and 5 above were in conformance with the rules of the Michigan Board of Land Surveyors or by a Decree of a Court of Law, established, re-established, monumented, re-monumented, recovered, found as expressed below:



NOTE: Not more than 4 corners, all in the same town and range, may be recorded on this certificate.

A. Description of original monument and accessories and/or subsequent restoration:

G.L.O. (1815-1816) DESCRIPTION OF CORNER NOT STATED IN NOTES.

WITNESSES: BO 10 S52W 20 (13.20') (GONE)
DO 12 S20E 2.22 (1.47') (GONE)

W.P.A. (1930's) - FOUND IRON (#89)

WITNESSES: NE 35.54' NAIL NW SIDE 14" MAPLE (GONE)
NE 53.10' NAIL N SIDE 14" MAPLE (GONE)
SE 102.22' NAIL NE SIDE 8" OAK (GONE)
SW 44.10' CROSS IN RD. SIGN P. (GONE)
NW 42.27' NAIL NE SIDE 26" MAPLE (GONE)



B. Description of corner evidence found and/or method applied in restoring or reestablishing corner:

DISTANCE TO C6 MEASURED AS 2636.06'; RECORD W.P.A. (1930) DISTANCE OF 2635.80';
DISTANCE TO D7 MEASURED AS 2610.17'; RECORD W.P.A. (1930) DISTANCES OF 2610.00' AND 2610.07';
DISTANCE TO C8 MEASURED AS 2639.79'; RECORD W.P.A. (1930) DISTANCES OF 2639.31' AND 2639.51';
DISTANCE TO B7 MEASURED AS 2618.69'; RECORD W.P.A. (1930) DISTANCES OF 2618.03' AND 2617.61';

L.18112 P.374 - FOUND IRON IN HANDHOLE (1972)
NW'LY 81.52' CROSS IN LAMP POST (MEAS. 82.17')
NW'LY 78.27' CROSS IN LAMP POST (MEAS. 78.90')
SE'LY 76.86' CROSS IN LAMP POST (MEAS. 77.50')
SW'LY 81.41' CROSS IN LAMP POST (MEAS. 81.42')

L.18272 P.284 (C.S.) - DESCRIPTION OF CORNER NOT STATED ON C.S. (1972)
NO WITNESSES SHOWN ON SAID C.S.
(CONTINUED ON OTHER SIDE)

C. Description of monument for corner and accessories established to perpetuate locating the position of the corner:

C-7 SECTION CORNER 17, 18, 19 & 20, T3S, R10E
FOUND A CONCRETE MONUMENT IN A HANDHOLE ROAD BOX @ GODDARD AND BEECH DALY ROADS AND IT IS ACCEPTED AS A CAREFUL AND FAITHFUL PERPETUATION OF THE POSITION OF THE ORIGINAL CORNER.
WITNESSES: N 67°11' W 82.17' FOUND CHISELED "X" IN SW ANCHOR BOLT IN BASE OF STEEL LIGHT POLE (SUPRA)
N 63°28' E 78.90' FOUND CHISELED "X" IN SE ANCHOR BOLT IN BASE OF STEEL LIGHT POLE (SUPRA)
S 62°55' E 77.50' FOUND CHISELED "X" IN NE ANCHOR BOLT IN BASE OF STEEL LIGHT POLE (SUPRA)
S 61°40' W 81.42' FOUND CHISELED "X" IN NE ANCHOR BOLT IN BASE OF STEEL LIGHT POLE (SUPRA)
PLACED A REMONUMENTATION BRASS DISC AND CAP #16937 ON ABOVE FOUND MONUMENT C-7.

Signed by [Signature]
Surveyor's Michigan License No. 16937

Date NOVEMBER 30, 1993

12/13/93 35696 REMO FEE 2.00
12/13/93 35696 DEED 14.00

ALL DO NOT MAN

SECTION B (CONTINUED)

L.19645 P.760-762 (C.S.) - FOUND MONUMENT BOX IN PAVEMENT (1976)

- N 30° E 77.90' STREET LIGHT (MEAS. N.27°05' E. 79.64')
- S 30° E 79.30' STREET LIGHT (MEAS. S.26°16' E. 79.27')
- N 55° W 75.70' C/L M.B.T. M.H. (MEAS. N.48°46' W. 75.74')