

**SURVEY & REMONUMENTATION**

**FILE DO NOT WRITE**

**LAND CORNER RECORDATION CERTIFICATE**

Filing Requirement of Act 74, Mich. P.A. 1970

Liber-29739 Page-593.0

97327871LS 12/15/1997 08:49AM

For corners in

**SECTION**

WAYNE  
(County)

Located in: CITY OF TAYLOR (TOWNSHIP #14)  
Corner Code #

- |                                       |     |       |      |
|---------------------------------------|-----|-------|------|
| 1. Public Land Survey                 | T3S | R 10E | F-13 |
|                                       | T   | R     |      |
|                                       | T   | R     |      |
|                                       | T   | R     |      |
| 2. Property Controlling in Section    | S   | T     | R    |
|                                       | S   | T     | R    |
| 3. Miscellaneous Property in Sec.     | S   | T     | R    |
|                                       | S   | T     | R    |
| 4. Lot No. _____, Recorded Plat _____ |     |       |      |
| 5. Private Claims _____               |     |       |      |

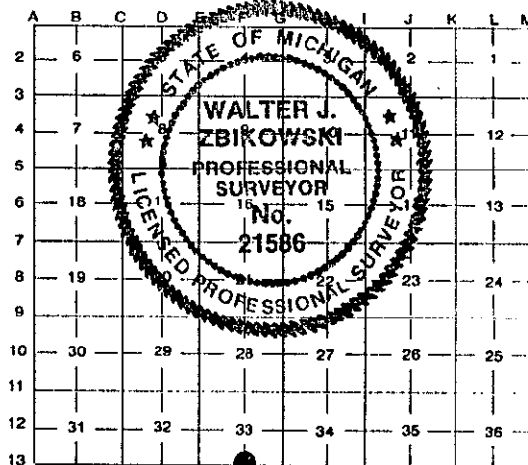
Compliance with ACT 345, P.A. 1990

APPROVED ON: 11-13-97  
WAYNE COUNTY REMONUMENTATION PEER GROUP COMMITTEE

Register of Deeds Stamp & File Number

I, WALTER J. ZBIKOWSKI, in a field survey on NOVEMBER 25, 1997, do hereby certify that under requirements of P.A. 74, Michigan P.A. of 1970, the corner points mentioned in lines 1 and 2 above were in conformance with regulations and rules therefore as required in the current manual of survey instructions of the United States Department of the Interior, Bureau of Land Management or by a decree of a Court of Law and/or that the corner points mentioned in lines 3, 4 and 5 above were in conformance with the rules of the Michigan Board of Land Surveyors or by a Decree of a Court of Law; established, re-established, monumented, re-monumented, recovered, found as expressed below.

NOTE: Not more than 4 corners, all in the same town and range, may be recorded on this certificate.



A. Description of original monument and accessories and/or subsequent restoration.

**ORIGINAL GOVERNMENT SURVEY BY JOSEPH FLETCHER, D.S. 1815-1817**

G.L.O. (1816) EAST (ON TRUE LINE BETWEEN T3 AND 4S., R.10E FROM COR. SEC. 31-32) 40.00 CHAINS, 1/4 SEC. COR (DESCRIPTION OF CORNER NOT STATED IN NOTES)

WITNESSES: BO 12" N 68 E 1.00 (LINKS) (66.00') (GONE)

DO 12" N 28 E 1.19 (LINKS) (78.54') (GONE)

SAME WITNESSES FOR (N) 1/4 SEC COR (SEC 4, T.4S., R.10E) IN G.L.O. NOTES

**RESURVEY AT THE DIRECTION OF ALBERT E. CHAMPNEY, DIRECTOR OF WAYNE COUNTY BUREAU OF TAXATION**

W.P.A. (1930's) IRON, S-33 (#164)

WITNESSES: N 62.30' 8" POPLAR (GONE)

NE 84.36' ED POLE (GONE)

SE 100.00' 48" MAPLE (GONE)

SSE 32.26' 30" MAPLE (GONE)

NW 88.72' 15" CHERRY (GONE)

SAME WITNESSES FOR W.P.A. (1939) FOR IRON, N-4 (T.4S., R.10E.) (#8)

\$4.00 REMONUMENTATION

RECORDED

FOREST E. YOUNGBLOOD, REGISTER OF DEEDS  
WAYNE COUNTY, MI

Receipt #41828

B. Description of corner evidence found and/or method applied in restoring or reestablishing corner.

FOUND A CONCRETE MONUMENT UNDER THE EAST EDGE/RIM OF A ROAD BOX WITH LID (BOTH GOOD) IN THE CENTERLINE OF PENNSYLVANIA ROAD (A TWO LANE CONCRETE ROAD).

DISTANCE TO E-13 MEASURED 2656.50'±; G.L.O. (1816) RECORD DISTANCE OF 40.00 CHAINS (2640.00'); W.P.A. (1930's) RECORD DISTANCES OF 2656.14' AND 2656.40';

DISTANCE TO F-12 TRAVERSED AS 2546.58'±; W.P.A. (1930's) RECORD DISTANCE OF 2546.47';

(CONTINUED ON BACK)

\$10.00 DEED

C. Description of monument for corner and accessories established to perpetuate locating the position of the corner.

F-13, SECTION CORNER SOUTH OF 33, T.3S., R.10E & F-1 CORNER NORTH OF 4, T.4S., R.10E., SET A REFERENCE PVC CAP ON REBAR JUST OUTSIDE THE EAST RIM OF A TILTED ROAD BOX AND OVER THE CENTER OF A CONCRETE MONUMENT UNDER THE EAST EDGE/RIM OF A ROAD BOX WITH LID (BOTH GOOD) IN THE CENTERLINE OF PENNSYLVANIA ROAD (A TWO LANE CONCRETE ROAD) AND IT IS ACCEPTED AS A CAREFUL AND FAITHFUL PERPETUATION OF THE POSITION OF THE ORIGINAL CORNER AND IT IS COMMON WITH F-1 SECTION CORNER NORTH OF 4, T.4S., R.10E.

WITNESSES: N 43°55' E 69.11' SET NAIL AND STAMPED REMONUMENTATION DISC ON SOUTHEAST SIDE OF A NEW UTILITY POLE

S 41°51' W 68.48' FOUND-PK NAIL ON SOUTHEAST SIDE OF A UTILITY POLE

S 62°18' W 107.32' FOUND NAIL WITH WCRB BRASS DISC ON NW SIDE OF UTILITY POLE (SUPRA)

N 70°28' W 117.75' CENTERLINE OF TOP BOLT ON FIRE HYDRANT

N 46°05' W 66.45' FOUND CUT "X" ON SOUTH RIM OF A SANITARY MANHOLE

DID NOT PLACE ANY REMONUMENTATION BRASS DISC OR PVC CAP ON ABOVE CONCRETE MONUMENT F-13, T.3S., R.10E., AND F-1, T.4S., R.10E., BUT SET A NAIL WITH AN LLS #21586 STAMPED REMONUMENTATION DISC ON THE SOUTHEAST SIDE OF A UTILITY POLE IN THE NORTHEAST QUAD USED IN THE WITNESSES IN SECTION C, AS THE ROAD BOX NEEDS TO BE REMOVED AND REPLACED IN A POSITION TO ACCESS SAID CONCRETE MONUMENT OR ITS REPLACEMENT.

Signed by

*Walter J. Zbikowski*

Date

DEC 8, 1997

WALTER J. ZBIKOWSKI

Surveyor's Michigan License No. 21586

B. CONTINUED

DISTANCE TO G-13 MEASURED AS 2650.24'±; G.L.O. (1816) RECORD DISTANCE OF 40.00 CHAINS (2640.00'); W.P.A. (1930's) RECORD DISTANCES OF 2650.56' AND 2650.26';

W.P.A. (1973) MON IN BOX, N-4 (#8)

WITNESSES: N	65.00'	"X" CUT E. SIDE COR (FENCE) POST (GONE)
NNE	51.42'	NAIL AND TAG (SE/S) ED. POLE (GONE)
SSW	68.58'	NAIL AND TAG (SE/S) MBT POLE (MEASURED 68.48')
WSW	107.31'	NAIL AND TAG (NW/S) MBT POLE (MEASURED 107.32')

NO KNOWN LCRC ON RECORD AT WAYNE COUNTY REGISTER OF DEEDS.

SURVEY &  
REMONUMENTATION

MAR 17 1998

SECTION

FILE DO NOT MAIL