

FEB 28 1994

COMMISSIONER

LAND CORNER RECORDATION CERTIFICATE
Filing Requirement of Act 74, Mich. P.A. 1970

For corners in WAYNE (County)

Located In: CITY OF TAYLOR

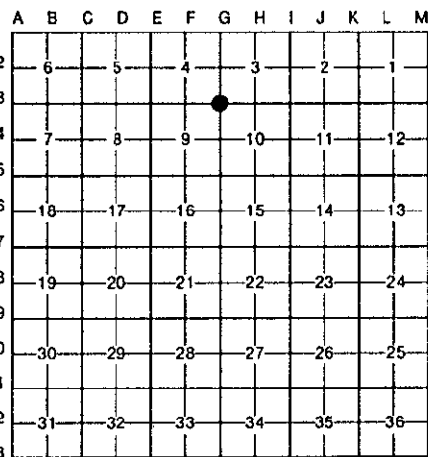
Corner Code # G-3

- 1. Public Land Survey T 3S R 10E
2. Property Controlling in Section S T R
3. Miscellaneous Property in Sec. S T R

Compliance with ACT 345, P.A. 1990
APPROVED ON: 12-10-93
WAYNE COUNTY REMONUMENTATION PEER GROUP COMMITTEE

Register of Deeds Stamp & File Number

- 4. Lot No. , Recorded Plat
5. Private Claims



I, E. PATRICK O'ROURKE, in a field survey on NOVEMBER 30, 19 93, do hereby certify that under requirements of P.A. 74, Michigan P.A. of 1970, the corner points mentioned in lines 1 and 2 above were in conformance with regulations and rules therefore as required in the current manual of survey instructions of the United States Department of the Interior, Bureau of Land Management or by a decree of a Court of Law and/or that the corner points mentioned in lines 3, 4 and 5 above were in conformance with the rules of the Michigan Board of Land Surveyors or by a Decree of a Court of Law; established, re-established, monumented, re-monumented, recovered, found as expressed below:

NOTE: Not more than 4 corners, all in the same town and range, may be recorded on this certificate.

A. Description of original monument and accessories and/or subsequent restoration:

G.L.O. (1815-1816) DESCRIPTION OF CORNER NOT STATED IN NOTES.

WITNESSES: W. ASH 10 N77W 12 (7.92') (GONE)
ELM 9 S11W 15 (9.90') (GONE)

W.P.A. (1930's) - FOUND IRON (#33)

WITNESSES: NE'LY 65.67' NAIL NW SIDE 20" APPLE (GONE)
SE'LY 82.74' INTERSECTION OF BACK OF WALKS (GONE)
SW'LY 49.82' NAIL W. SIDE 10" APPLE (GONE)
SW'LY 96.35' NE CORNER HOUSE FOUNDATION (GONE)
NW'LY 38.00' NAIL NE SIDE ED. POLE (GONE)

B. Description of corner evidence found and/or method applied in restoring or reestablishing corner:

DISTANCE TO G2 MEASURED AS 2634.77'; RECORD W.P.A. (1930) DISTANCES OF 2633.71' AND 2634.02';
DISTANCE TO H3 MEASURED AS 2550.49'; RECORD W.P.A. (1930) DISTANCES OF 2549.99' AND 2550.50';
DISTANCE TO F3 MEASURED AS 2732.30'; RECORD W.P.A. (1930) DISTANCES OF 2732.05' AND 2732.27';

L.19333 P.4 - FOUND IRON ENCASED IN CONCRETE IN MONUMENT BOX (1975)

N. 51°28'E 65.8' P.K. NAIL E. SIDE OF D.E. POLE (GONE)
N. 61°43'E 88.2' ARROW ON HYDRANT (MEAS. 88.09')
N. 57°03'W 74.5' P.K. NAIL W. SIDE D.E. POLE (MEAS. 75.02')

(CONTINUED ON OTHER SIDE)

C. Description of monument for corner and accessories established to perpetuate locating the position of the corner:

G-3 SECTION CORNER 3, 4, 9 & 10, T.3S, R.10E.

FOUND 1/2" IRON ROD IN CONCRETE IN A HANDHOLE ROAD BOX AT ECORSE AND MONROE ROADS AND IT IS ACCEPTED AS A CAREFUL AND FAITHFUL PERPETUATION OF THE POSITION OF THE ORIGINAL CORNER.

WITNESSES: N 50°56'E 65.63' FOUND P.K. NAIL IN BRASS TAG ON NW SIDE OF POWER POLE
N 56°03'W 74.59' FOUND P.K. NAIL IN BRASS TAG ON NE SIDE OF POWER POLE
S 44°42'E 69.91' FOUND P.K. NAIL IN BRASS TAG ON SW SIDE OF UTILITY POLE
S 43°38'W 71.70' FOUND P.K. NAIL IN BRASS TAG ON SE SIDE OF A TRAFFIC SIGNAL POLE

PLACE A REMONUMENTATION BRASS DISC AND CAP #16937 ON ABOVE FOUND 1/2" IRON ROD G3.

Signed by E. Patrick O'Rourke
Surveyor's Michigan License No. 16937

Date NOVEMBER 30, 1993



12/13/93 35696 DEED 14.00
12/13/93 35696 REMO FEE 2.00

FILE DO NOT MAIL

SECTION B (CONTINUED)

UNRECORDED (C.S.) - FOUND 1/2" IRON ROD IN MONUMENT BOX (1989)

DISTANCE TO H3 SHOWN AS 2550.37'; (MEAS. AS 2550.49')

DISTANCE TO G2 SHOWN AS 2634.61'; (MEAS. AS 2634.77')

N. 54°49'W 74.70 POWER POLE (MEAS. 75.02')

N. 50°57'E 65.49' POWER POLE (MEAS. 65.63')

S. 44°42'E 69.90' POWER POLE (MEAS. 69.91')

S. 44°09'W 51.32' POWER POLE (GONE)

ONLY SUBSEQUENT L.C.R.C. AT WAYNE COUNTY REGISTER OF DEEDS.