

FILE DO NOT MAIL

LAND CORNER RECORDATION CERTIFICATE
Filing Requirement of Act 74, Mich. P.A. 1970

MAR 02 1999

For corners in

CITY of

SECTION

Wayne Located In: Taylor Twp. Corner Code #

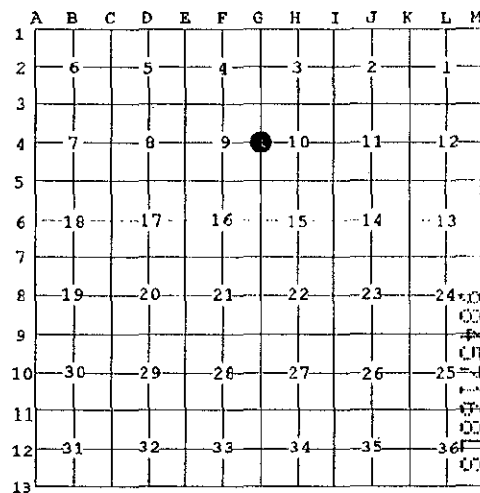
- 1. Public Land Survey T-3-S R-10-E G-4
2. Property Controlling in Section S T R
3. Miscellaneous Property in Sec. S T R

Compliance with ACT 345, P.A. 1990
APPROVED ON: 12-10-98
WAYNE COUNTY REMONUMENTATION PEER GROUP COMMITTEE
Register of Deeds Stamp & File Number

- 4. Lot No. , Recorded Plat
5. Private Claims

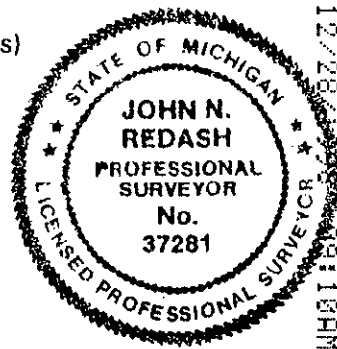
I, John N. Redash, in a field survey on Dec. 1, 1998 do hereby state that under requirements of P.A. 74, Michigan P.A. of 1970, the corner points mentioned in lines 1 and 2 above were in conformance with regulations and rules therefore as required in the current manual of survey instructions of the United States Department of the Interior, Bureau of Land Management or by a decree of a Court of Law and /or that the corner points mentioned in lines 3, 4 and 5 above were in conformance with the rules of the Michigan Board of Land Surveyors or by a Decree of a Court of Law; established, re-established, monumented, recovered, found as expressed below:

NOTE: Not more than 2 corners, all in the same town and range, may be recorded on this certificate.



A. Description of original monument and accessories and/or subsequent restoration:

- G.L.O. (1817), North 40.00 chains, 1/4 section corner (description of corner not stated in notes)
Witnessed by: W. Ash 10" S. 10° E. 7 (links) (gone)
B. Oak 12" N. 32° E. 16 (links) (gone)
W.P.A. (1930's), Mon. (#46)
Witnessed by: E. 66.84 4" Twin Elm (gone)
S.E. 4.33 4" Elm (gone)
S.W. 53.13 5" Elm (gone)



B. Description of corner evidence found and/or method applied in restoring or reestablishing corner:

No monument was found occupying this corner. No further witnesses are of record. I re-established this corner with existing monumentation from "Fairfield Park Subdivision" as recorded in Liber 77, Page 55, Wayne County Records. Field measurements were observed between the following corners:

Table with 4 columns: Corner Pair, Measurement, Monument Type, and Monument Type. Rows include G-4 to G-5 (2636.15 Meas., G.L.O.), G-4 to G-3 (2617.86 Meas., G.L.O.), and WPA measurements (2640.00 Rec., 2636.42 Rec., 2636.69 Rec.).

\$4.00 REMONUMENTATION
\$7.00 DEED
RECORDED
FOREST E. YOUNGBLOOD, REGISTER OF DEEDS
WAYNE COUNTY, MI
Receipt #101786

C. Description of monument for corner and accessories established to perpetuate locating the position of the corner:

G-4, East 1/4 corner of Section 9, West 1/4 corner of Section 10, T-3-S., R-10-E. I placed a remonumentation brass cap #37281 on a 3/4" X 24" iron rod in a new monument box in concrete pavement at the intersection of Champaign and Monroe Streets and it is accepted as a careful and faithful perpetuation of the position of the original corner.

- Witnesses: N. 65° E., 62.13' Set mag. nail with Wayne County Remon. Tag N.W. face of U-pole
S. 26° E., 64.31' Set mag. nail with Wayne County Remon. Tag S.W. face of 16" Maple
S. 60° W., 63.71' Found double headed nail with MSHD tag S.E. face U-pole
N. 58° W., 74.43' Set mag. nail with Wayne County Remon. tag N.E. face of U-pole

Signed by [Signature] Date December 7, 1998
Surveyor's Michigan License No. 37281

R LCR 7 4R 1PG U. [Signature]