

FILE DO NOT MAIL

LAND CORNER RECORDATION CERTIFICATE  
Filing Requirement of Act 74, Mich. P.A. 1970

Liber-29739 Page-598.0  
97327874LS 12/15/1997 08:49AM

\$10.00 DEED

For corners in

WAYNE  
(County)

Located in: Corner Code #  
CITY OF TAYLOR (TOWNSHIP #14)

1. Public Land Survey

T3S R 10E G-12

2. Property Controlling in Section

T R SURVEY & REMONUMENTATION

3. Miscellaneous Property in Sec.

S T R DEC 01 2000

4. Lot No. \_\_\_\_\_, Recorded Plat SECTION

5. Private Claims \_\_\_\_\_

RECORDED  
FOREST E. YOUNGBLOOD, REGISTER OF DEEDS  
WAYNE COUNTY, MI  
Receipt #41828

Compliance with  
ACT 345, P.A. 1990

APPROVED ON: 11-13-97  
WAYNE COUNTY REMONUMENTATION  
PEER GROUP COMMITTEE

Register of Deeds Stamp & File Number

I, WALTER J. ZBIKOWSKI, in a field survey on NOVEMBER 25, 1997, do hereby certify that under requirements of P.A. 74, Michigan P.A. of 1970, the corner points mentioned in lines 1 and 2 above were in conformance with regulations and rules therefore as required in the current manual of survey instructions of the United States Department of the Interior, Bureau of Land Management or by a decree of a Court of Law and/or that the corner points mentioned in lines 3, 4 and 5 above were in conformance with the rules of the Michigan Board of Land Surveyors or by a Decree of a Court of Law; established, re-established, monumented, re-monumented, recovered, found as expressed below.

NOTE: Not more than 4 corners, all in the same town and range, may be recorded on this certificate.

A. Description of original monument and accessories and/or subsequent restoration.

ORIGINAL GOVERNMENT SURVEY BY JOSEPH FLETCHER, D.S. (1815-1817)

G.L.O. (1817) NORTH BETWEEN SEC 33-34, T.3S., R.10E.; 40.00 CHAINS, 1/4 SEC COR (DESCRIPTION OF CORNER NOT STATED IN NOTES)

WITNESSES: LYNN 16" N 85 W 26 (LINKS) (17.16') (GONE)  
IRONWOOD 9" N 30 E 16 (LINKS) (10.56') (GONE)

RESURVEY AT THE DIRECTION OF ALBERT E. CHAMPNEY, DIRECTOR OF WAYNE COUNTY BUREAU OF TAXATION

W.P.A. (1930's) IRON AND STONE, W-34 (#150)  
WITNESSES: ESE 29.78' IRON FENCE POST (GONE)  
SE 73.25' MON (GONE)  
E'LY 10.00'

\$4.00 REMONUMENTATION

CENTERLINE OF DRIVE (MEASURED 7.77' TO CEN. NEW PAVEMENT)

B. Description of corner evidence found and/or method applied in restoring or reestablishing corner.

FOUND A 3/8" REBAR (PVC CAP #22705/17089) IN A ROAD BOX WITH LID (BOTH GOOD) IN THE SOUTHBOUND LANE OF RACHO ROAD (A THREE LANE CONCRETE ROAD) JUST NORTH OF THE INTERSTATE I-75 CONNECTOR HIGHWAY TO TELEGRAPH ROAD. (NOTE: ALSO FOUND A 3/8" REBAR (REFERENCE PVC CAP IN SAME BOX) 0.37' S OF ABOVE REBAR).

DISTANCE TO G-11 MEASURED AS 2585.93'; MEASURED DISTANCE REVISED TO 2586.51' AS RESULT OF APPROVED POSITION OF REMONUMENTATION PEER REVIEW; G.L.O. (1817) RECORD DISTANCE OF 40.00 CHAINS; (2640.00'); W.P.A. (1930's) RECORD DISTANCES OF 2586.52' AND 2586.55';

DISTANCE TO G-13 MEASURED AS 2578.38'; MEASURED DISTANCE REVISED TO 2577.80' AS RESULT OF APPROVED POSITION OF REMONUMENTATION PEER REVIEW; G.L.O. (1817) RECORD DISTANCE OF 40.00 CHAINS; (2640.00') "OSBERG MONROE BLVD. SUB'N" (L.55, P. 19) (1925) RECORD DISTANCE OF 2577.80'; W.P.A. (1930's) RECORD DISTANCES OF 2577.22' AND 2577.26';

C. Description of monument for corner and accessories established to perpetuate locating the position of the corner.

G-12, SECTION CORNER 33-34, T.3S., R.10E

A 3/8" REBAR (PVC CAP #22705/17089) IN A ROAD BOX WITH LID (BOTH GOOD) IN THE SOUTHBOUND LANE OF RACHO ROAD (A THREE LANE CONCRETE ROAD) JUST NORTH OF THE INTERSTATE I-75 CONNECTOR HIGHWAY TO TELEGRAPH ROAD AND IT IS NOT ACCEPTED AS A CAREFUL AND FAITHFUL PERPETUATION OF THE POSITION OF THE ORIGINAL CORNER. SEE SKETCH IN REMONUMENTATION DOSSIER.

WITNESSES: N 32°34' E 90.78' 91.27' FOUND NAIL/DISC ON NORTHWEST SIDE OF UTILITY POLE  
S 19°39' E 168.89' 168.40' FOUND PK NAIL ON EAST SIDE OF A POWER POLE (SUPRA)  
S 85°11' W 34.94' 31.98' SET NAIL/DISC (OVER RECESSED PK NAIL) ON S SIDE OF TWIN 10" OAK (SUPRA)  
N 31°43' W 45.25' 45.76' FOUND CHISELED "X" ON EAST RIM OF A SANITARY MANHOLE  
(S 86°10' W 32.65' FOUND A STEEL ENCASED CONCRETE MONUMENT (DISTURBED))  
(S 04°44' E 0.37' FOUND A 3/8" REBAR (REFERENCE PVC CAP) IN SAME ROAD BOX)

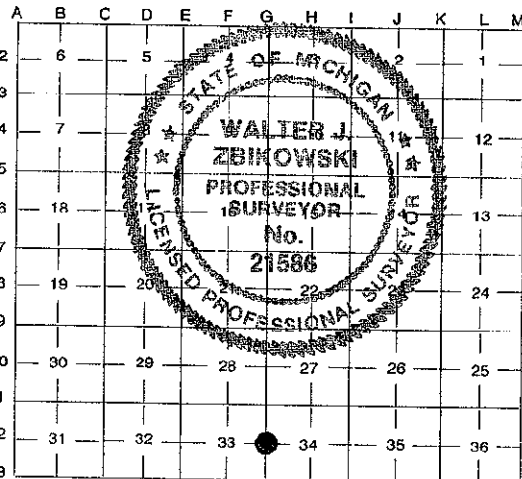
DID NOT PLACE ANY REMONUMENTATION BRASS DISC OR PVC CAP ON EITHER OF THE ABOVE FOUND REBARS BUT MADE A 1/4" DRILL HOLE AT THE APPROVED POSITION 0.58' SOUTH OF ABOVE WITNESSED REBAR AND REPLACED NAIL WITH AN LLS #21586 STAMPED REMONUMENTATION DISC ON THE NORTHWEST SIDE OF THE UTILITY POLE USED AS A WITNESS IN SECTION C AND ALSO REVISED THE WITNESSES TO BE USED FOR THE DRILL HOLE G-12.

Signed by Walter J. Zbikowski

WALTER J. ZBIKOWSKI

Date DEC. 8, 1997

Surveyor's Michigan License No. 21586



R-LCR-10-4R-2PG-U DBZ

B. CONTINUED

DISTANCE TO F-12 TRAVERSED AS 2643.93'±; "SUPERVISOR'S TAYLOR PLAT NO. 10" (L. 66, P.26) (1938) RECORD  
DISTANCE OF 2643.38';

L.18381 P.463, FOUND 1" SOLID IRON ROD (1972) LCRC #209

WITNESSES:	NE	60.76'	PK NAIL IN POWER POLE (GONE)
	SE	170.17'	PK NAIL IN (E/S) POWER POLE (MEASURED 168.89')
	W	31.96'	PK NAIL (NOW RECESSED 1") ON S SIDE 10" OAK (MEASURED 31.91')

**SURVEY &  
REMONUMENTATION**

**DEC 01 2000**

**SECTION**

**FILE DO NOT MAIL**