

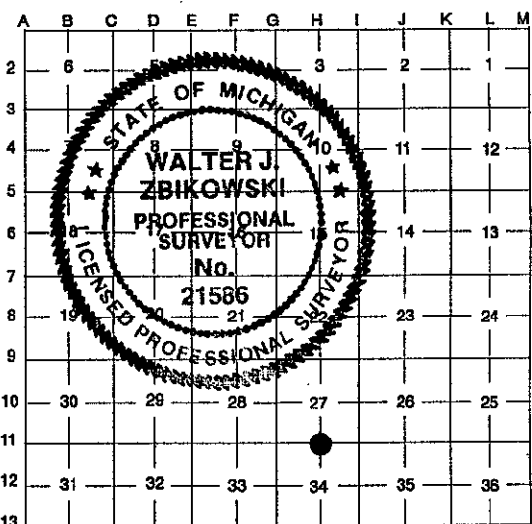
LAND CORNER RECORDATION CERTIFICATE
 Filing Requirement of Act 74, Mich. P.A. 1970

\$ 4.00 DEED
 DEC 96 2:13 P.M. RECEIPT# 62B
 RECORDED
 FOREST E. YOUNGBLOOD, REGISTER OF DEEDS
 WAYNE COUNTY, MI

For corners in

<u>WAYNE</u> (County)	Located in:	Corner Code #
	CITY OF TAYLOR TOWNSHIP #14	
1. Public Land Survey	T <u>3S</u> R <u>10E</u>	<u>H-11</u>
	T _____ R _____	_____
	T _____ R _____	_____
	T _____ R _____	_____
2. Property Controlling in Section	S _____ T _____ R _____	_____
	S _____ T _____ R _____	_____
3. Miscellaneous Property in Sec.	S _____ T _____ R _____	_____
	S _____ T _____ R _____	_____
4. Lot No. _____, Recorded Plat _____		
5. Private Claims _____		

\$ 4.00 REMONUMENTATION
 LIBER **29337** PAGE **566**
 Compliance with
 ACT 345, P.A. 1990
 APPROVED ON: 11-13-96
 WAYNE COUNTY REMONUMENTATION
 PEER GROUP COMMITTEE
 Register of Deeds Stamp & File Number



96319305

I, WALTER J. ZBIKOWSKI, in a field survey on OCTOBER 26, 1995, do hereby certify that under requirements of P.A. 75, Michigan P.A. of 1970, the corner points mentioned in lines 1 and 2 above were in conformance with regulations and rules therefore as required in the current manual of survey instructions of the United States Department of the Interior, Bureau of Land Management or by a decree of a Court of Law and/or that the corner points mentioned in lines 3, 4 and 5 above were in conformance with the rules of the Michigan Board of Land Surveyors or by a Decree of a Court of Law; established, re-established, monumented, re-monumented, recovered, found as expressed below.

NOTE: Not more than 4 corners, all in the same town and range, may be recorded on this certificate.

A. Description of original monument and accessories and/or subsequent restoration.
ORIGINAL GOVERNMENT SURVEY BY JOSEPH FLETCHER, D.S. (1815-1817)
 G.L.O. (1816) SET 1/4 SEC COR AT AVERAGE DIST (DESCRIPTION OF CORNER NOT STATED IN NOTES)
 WITNESSES: BEECH 12" DIAMETER A CORNER TREE
RESURVEY AT THE DIRECTION OF ALBERT E. CHAMPNEY, DIRECTOR OF WAYNE COUNTY BUREAU OF TAXATION
 W.P.A. (1930's) IRON N-34 (#136)
 WITNESSES: N.E. 50.69' 14" APPLE (GONE)
 S.E. 60.63' 6" ELM (GONE)
 S.W. 47.10' 6" ELM (GONE)
 N.W. 77.37' 6" ELM (GONE)

B. Description of corner evidence found and/or method applied in restoring or reestablishing corner.
 FOUND A CONCRETE MONUMENT IN A ROAD BOX (GOOD) IN CENTER OF WEST BOUND RIGHT LANE OF EUREKA ROAD (ASPHALT SURFACED CONCRETE PAVEMENT) JUST EAST OF NORTH BOUND INTERSTATE I-75 OVERPASS.
 DISTANCE TO I-11 TRAVERSED AS 2636.03'; G.L.O. (1816) RECORD DISTANCE OF 39.69 CHAINS (2619.54'); W.P.A. (1930's) RECORD DISTANCE OF 2636.07'
 DISTANCE TO G-11 TRAVERSED AS 2635.81'; G.L.O. (1816) RECORD DISTANCE OF 39.69 CHAINS (2619.54'); W.P.A. (1930's) RECORD DISTANCES OF 2636.79' AND 2636.80'
 DISTANCE TO H-10 TRAVERSED AS 2678.86'; W.P.A. (1930's) RECORD DISTANCE OF 2679.14'
 L.18381 P.463 FOUND IRON IN MONUMENT BOX (1972) LCRC #209
 N.W. 70.68' FENCE POST (GONE)
 N.E. 27.15' CENTER OF SEWER MANHOLE (GV&W) (MEASURED 27.28')
 S.E. 68.00' CENTER OF SEWER (STORM) MANHOLE (MEASURED 68.09')
 S. 34.50' "X" CUT IN SOUTH CURB OF WESTBOUND PAVEMENT (MEASURED 34.65')

C. Description of monument for corner and accessories established to perpetuate locating the position of the corner.
 H-11 SECTION CORNER 27, 34 T.3S., R.10E.
 9-23-96 PLACED A REMONUMENTATION BRASS DISC AND PVC CAP #21586 ON THE REBAR IN CONCRETE MONUMENT IN A ROAD BOX IN CENTER OF WEST BOUND RIGHT LANE OF EUREKA ROAD (ASPHALT SURFACED CONCRETE PAVEMENT) JUST EAST OF NORTH BOUND INTERSTATE I-75 HIGHWAY OVERPASS, AND IT IS ACCEPTED AS A CAREFUL AND FAITHFUL PERPETUATION OF THE POSITION OF THE ORIGINAL CORNER.
 WITNESSES: S.00°17'W. 34.65' CHISLED "X" IN TOP OF SOUTH CURB TO WEST BOUND PAVEMENT (SUPRA)
 N.27°27'E. 54.58' TIP OF ARROW ATOP FIRE HYDRANT TOP NUT
 N.59°34'W. 50.29' CHISLED "X" IN S.E. BOLT IN BASE OF STEEL LIGHT POLE
 N.73°53'E. 54.02' N.E. CORNER OF STEEL CURB AT CATCH BASIN

Signed by Walter J. Zbikowski
 Surveyor's Michigan License No. 21586

Date DEC. 11, 1996

48
70
M