

DEC 28 1998

FILE DO NOT MAIL

LAND CORNER RECORDATION CERTIFICATE
Filing Requirement of Act 74, Mich. P.A. 1970

SURVEY & REMONUMENTATION

MAR 02 1999

For corners in

city of

Wayne

(County)

Located In: Taylor Twp. Corner Code #

SECTION

- 1. Public Land Survey T-3-S R-10-E I-5
T R
T R
T R
- 2. Property Controlling S T R
in Section S T R
- 3. Miscellaneous S T R
Property in Sec. S T R

Compliance with
ACT 345, P.A. 1990

APPROVED ON: 12-10-98
WAYNE COUNTY REMONUMENTATION
PEER GROUP COMMITTEE

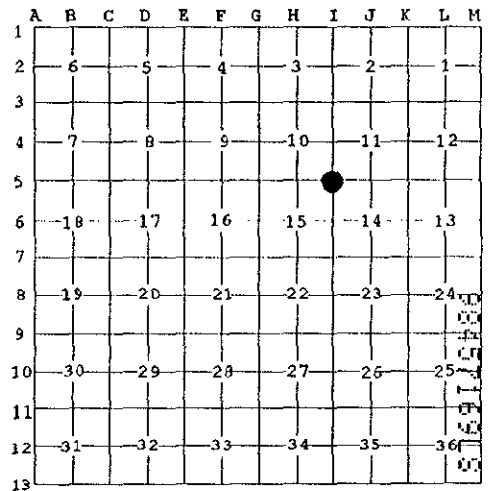
Register of Deeds Stamp & File Number

4. Lot No. _____, Recorded Plat _____

5. Private Claims _____

I, John N. Redash, in a field survey on Dec. 1, 1998 do hereby state that under requirements of P.A. 74, Michigan P.A. of 1970, the corner points mentioned in lines 1 and 2 above were in conformance with regulations and rules therefore as required in the current manual of survey instructions of the United States Department of the Interior, Bureau of Land Management or by a decree of a Court of Law and for that the corner points mentioned in lines 3, 4 and 5 above were in conformance with the rules of the Michigan Board of Land Surveyors or by a Decree of a Court of Law; established, re-established, monumented, recovered, found as expressed below:

NOTE: Not more than 2 corners, all in the same town and range, may be recorded on this certificate.



A. Description of original monument and accessories and/or subsequent restoration:

G.L.O. (1817); North 80.00 chains, Corner Section 10, 11, 14, and 15 (description of corner not stated in notes)

Witnessed as: B. Ash 10" N. 74° E. 33 (links) (gone)
Oak 10" N. 31° W. 18 (links) (gone)

W.P.A. (1930's), Iron (#57)
Witnessed as; S.E. 32.00 Cross on culvert crock (gone)
S.W. 124.10 12" Hickory (gone)
N.W. 81.60 5" Elm (gone)
N.W. 49.86 8" Elm (gone)



B. Description of corner evidence found and/or method applied in restoring or reestablishing corner:

A concrete monument with 1/2" iron in a monument box currently occupies this corner. No further witnesses are of record. Field measurements were observed between the following corners:

I-4 to I-5	Meas.	I-5 to I-6	Meas.	H-5 to I-5	Meas.
2620.14		2656.28		2611.14	
2640.00	Rec. G.L.O.	2640.00	Rec. G.L.O.	2629.11	Rec. G.L.O.
2619.35	Rec. W.P.A.	2656.67	Rec. W.P.A.	2611.05	W.P.A.

C. Description of monument for corner and accessories established to perpetuate locating the position of the corner:

I-5, Section Corners 10, 11, 15, and 14, T-3-S., R-10-E.

I placed a remonumentation brass cap #37281 on the existing monument in monument box at the intersection of Oak and Pelham Roads, and it is accepted as a careful and faithful perpetuation of the position of the original corner. \$7.00 DEED

Witnesses: N. 42° E., 89.01' Found P.K. nail in N.W. face of U-pole
S. 58° E., 68.08' Set mag. nail with Wayne County Remon. tag S.W. face U-pole
S. 41° W., 64.51' Found P.K. nail S.E. face U-pole
N. 44° W., 112.54' Found P.K. nail S.W. face U-pole

RECORDED
FOREST E. YOUNGBLOOD, REGISTER OF DEEDS
WAYNE COUNTY, MI
Receipt #101786

Signed by John N. Redash

Date December 7, 1998

Surveyor's Michigan License No. 37281

R. LCR 7 42. 1PG U. DPJ

Libert-20034

Page-459.0

12/28/1998 09:11AM