

LAND CORNER RECORDATION CERTIFICATE
Filing Requirement of Act 74, Mich. P.A. 1970

For corners in

| | | |
|---------------------------------------|--|------------------------------|
| <u>WAYNE</u> (County) | Located in: CITY OF TAYLOR TOWNSHIP #14 | Corner Code # <u>I-11</u> |
| 1. Public Land Survey | T <u>3S</u> R <u>10E</u> | <u>I-11</u> |
| | T _____ R _____ | _____ |
| | T _____ R _____ | _____ |
| | T _____ R _____ | _____ |
| 2. Property Controlling in Section | S _____ T _____ R _____ | _____ |
| | S _____ T _____ R _____ | _____ |
| 3. Miscellaneous Property in Sec. | S _____ T _____ R _____ | _____ |
| | S _____ T _____ R _____ | _____ |
| 4. Lot No. _____, Recorded Plat _____ | | |
| 5. Private Claims _____ | | |

LIBER 29337 PAGE 567

Compliance with
ACT 345, P.A. 1990

APPROVED ON: 11-13-96
 WAYNE COUNTY REMONUMENTATION
 PEER GROUP COMMITTEE

Register of Deeds Stamp & File Number

I, WALTER J. ZBIKOWSKI, in a field survey on OCTOBER 16, 1995, do hereby certify that under requirements of P.A. 75, Michigan P.A. of 1970, the corner points mentioned in lines 1 and 2 above were in conformance with regulations and rules therefore as required in the current manual of survey instructions of the United States Department of the Interior, Bureau of Land Management or by a decree of a Court of Law and/or that the corner points mentioned in lines 3, 4 and 5 above were in conformance with the rules of the Michigan Board of Land Surveyors or by a Decree of a Court of Law; established, re-established, monumented, re-monumented, recovered, found as expressed below.

NOTE: Not more than 4 corners, all in the same town and range, may be recorded on this certificate.

A. Description of original monument and accessories and/or subsequent restoration.

ORIGINAL GOVERNMENT SURVEY BY JOSEPH FLETCHER, D.S. (1815-1817)

G.L.O. (1816) COR SEC 26, 27, 34, 35 T.3S., R.10E.

WITNESSES: B ASH 10 S 18 W 14 (9.24' REC) (GONE)
 ELM 10 N 19 E 18 (11.88' REC) (GONE)

RESURVEY AT THE DIRECTION OF ALBERT E. CHAMPNEY, DIRECTOR OF WAYNE COUNTY BUREAU OF TAXATION

W.P.A. (1930's) IRON SE 27 (#135)

WITNESSES: NE 57.89' USCGS BM #6R (GONE)
 NE 65.15' EDISON POLE (GONE)
 SE 60.7' TELEPHONE POLE (GONE)
 SW 70.20' TELEPHONE POLE (GONE)
 WNW 90.45' 15" MAPLE (GONE)

\$ 7.00 DEED
 12 DEC 96 2:13 P.M. RECEIPT# 628
 RECORDED
 FOREST E. YOUNGBLOOD, REGISTER OF DEEDS
 WAYNE COUNTY, MI

\$ 4.00 REMONUMENTATION

B. Description of corner evidence found and/or method applied in restoring or reestablishing corner.

FOUND A 1" REBAR IN A ROAD BOX (GOOD) AT THE INTERSECTION OF EUREKA AND ALLEN ROADS (BOTH ASPHALT SURFACED CONCRETE ROADS)

DISTANCE TO I-12 MEASURED AS 2646.49'; RECORD G.L.O. (1816) DISTANCE OF 40.00 CHAINS (2640.00'); RECORD W.P.A. (1930's) DISTANCES OF 2646.84' AND 2646.85'

"SUPERVISOR'S TAYLOR PLAT NO. 12" (L.69 P.55)(1942) RECORD DISTANCE OF 2647.12'

DISTANCE TO J-11 MEASURED AS 2631.85'; RECORD G.L.O. (1816) DISTANCE OF 40.03 CHAINS (2641.98'); RECORD W.P.A. (1930's) DISTANCE OF 2631.37'

DISTANCE TO I-10 MEASURED AS 2626.14'; RECORD G.L.O. (1816) DISTANCE OF 40.00 CHAINS (2640.00'); RECORD W.P.A. (1930's) DISTANCES OF 2625.64' AND 2625.55'

"SHOEMAKER'S SMALL FARMS SUBDIVISION" (L.68 P.74)(1941) RECORD DISTANCE OF 2625.65'

DISTANCE TO H-11 TRAVERSED AS 2636.03'; RECORD G.L.O. (1816) DISTANCE OF 39.69 CHAINS (2619.54'); RECORD W.P.A. (1930's) DISTANCE OF 2636.07'

L.25491 P.423 PIN IN MONUMENT BOX (1991) LCRC #1023

S.43°E. 72.99' POWER POLE (MEASURED 73.05')
 S.45°W. 75.16' LIGHT POLE (MEASURED 75.03')
 N.45°W. 73.15' LIGHT POLE (MEASURED 72.93')
 N.46°E. 73.84' LIGHT POLE (MEASURED 73.88')

C. Description of monument for corner and accessories established to perpetuate locating the position of the corner.

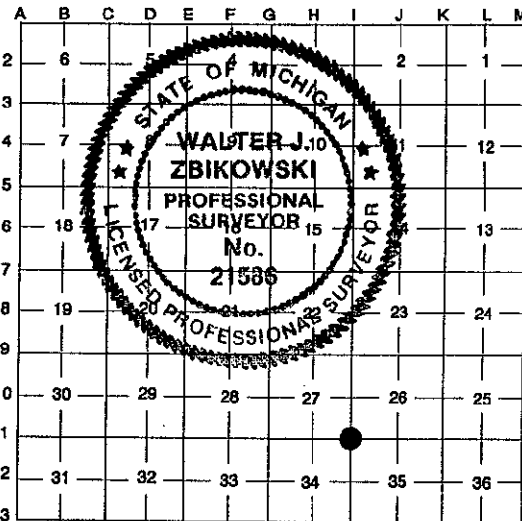
I-11 SECTION CORNER 26, 27, 34, 35 T.3S., R.10E

9-23-96 PLACED A REMONUMENTATION BRASS DISC AND PVC CAP #21586 ON THE 1" REBAR IN A ROAD BOX AT THE INTERSECTION OF EUREKA AND ALLEN ROADS (BOTH ASPHALT SURFACED CONCRETE ROADS) AND IT IS ACCEPTED AS A CAREFUL AND FAITHFUL PERPETUATION OF THE POSITION OF THE ORIGINAL CORNER.

WITNESSES: N.44°27'E. 73.88' NAIL IN WCRC BRASS REFERENCE DISC ON NW SIDE OF UTILITY POLE (SUPRA)
 S.46°57'E. 73.05' NAIL IN WCRC BRASS REFERENCE DISC ON NE SIDE OF UTILITY POLE (SUPRA)
 S.45°25'W. 75.03' NAIL IN WCRC BRASS REFERENCE DISC ON SE SIDE OF UTILITY POLE (SUPRA)
 N.43°33'W. 72.93' NAIL IN WCRC BRASS WITNESS DISC ON NE SIDE OF UTILITY POLE (SUPRA)

Signed by Walter J. Zbikowski
 WALTER J. ZBIKOWSKI
 Surveyor's Michigan License No. 21586

Date DEC. 11, 1996



90861896

44
70
M