

FILE DO NOT MAIL

LAND CORNER RECORDATION CERTIFICATE
Filing Requirement of Act 74, Mich. P.A. 1970

For corners in

Table with columns: Wayne (County), Located In: (Township), Corner Code #, and survey details (1. Public Land Survey, 2. Property Controlling in Section, 3. Miscellaneous Property in Sec.)

Liber-30864 Page-4
99595535 12/30/1999
F.E. Youngblood, Wayne Co. Register of Deeds
RDANDSYL

Compliance with
ACT 345, P.A. 1990

APPROVED ON: 12-8-99
WAYNE COUNTY REMONUMENTATION
PEER GROUP COMMITTEE

Register of Deeds Stamp & File
Number

4. Lot No. , Recorded Plat

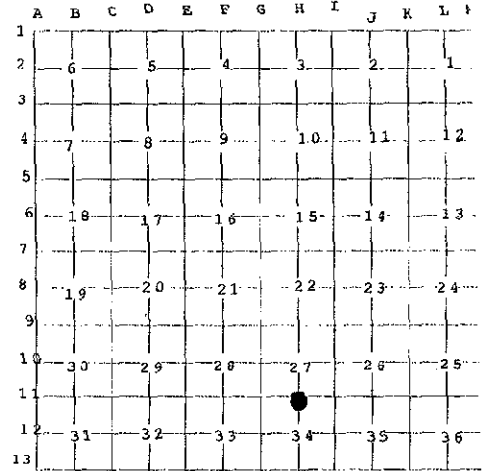
5. Private Claims

I, Michael S. Hoben, in a field survey on Sept. 22, 1999 do hereby state that under requirements of P.A. 74, Michigan P.A. of 1970, the corner points mentioned in lines 1 and 2 above were in conformance with regulations and rules therefore as required in the current manual of survey instructions of the United States Department of the Interior, Bureau of Land Management or by a decree of a Court of Law and/or that the corner points mentioned in lines 3, 4 and 5 above were in conformance with the rules of the Michigan Board of Land Surveyors or by a Decree of a Court of Law; established, re-established, monumented, recovered, found as expressed below:

NOTE: Not more than 2 corners, all in the same town and range, may be recorded on this certificate.

A. Description of original monument and accessories and/or subsequent restoration:

H-11 1817 GLO Notes Preston N/A Post Iron
1930's WPA witnesses
1930's WPA dimensions
1964 HCMA Survey Map Not Stated
1973 WCRC witnesses not stated



SECTION
FEB 28 2000

B. Description of corner evidence found and/or method applied in restoring or reestablishing corner:

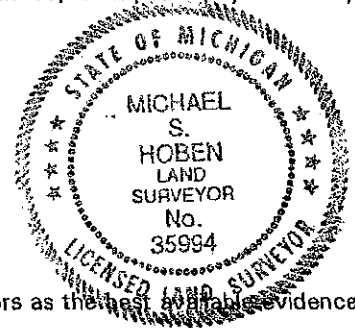
H-11 I found a 3/4" pipe, 5' +/- west of the centerline of an abandoned road. This point falls on a tree row projected to the east.
No previous witnesses remain.

Distance to G-11 = 2638.51' (GLO = 2642.31')(WPA = 2639.56' S34, 2639.53' S27)
Distance to I-11 = 2638.19' (GLO = 2642.31')(WPA = 2639.13' S34, 2639.52' S27)(HCMA = 2639.13')

C. Description of monument for corner and accessories established to perpetuate locating the position of the corner:

H-11 I replaced the found 3/4" pipe with a 4" x 36" concrete monument with a 2" aluminum cap stamped "Wayne County Monument MI Act 345 #35994"

N 40° E 35.97' Set nail and W.C.Remon tag W'ly face 6" Ash
S 85° E 32.50' "+" on bronze disc stamped WCRC BM 95-230
S 40° W 27.42' Set nail and W.C.Remon tag E'ly face 8" Ash
N 78° W 15.80' Set nail and W.C.Remon tag S'ly face 10" Ash



The selected location is accepted by me and is generally accepted by Professional Surveyors as the best available evidence of the position of the original corner.

Signed by Michael S. Hoben
Surveyor's Michigan License No. 35994

Date Dec. 27, 1999

FORM APPROVED BY MICHIGAN STATE BOARD OF LAND SURVEYORS, JAN. 28, 1971

REVISED MAY 14, 1975
REVISED JAN., 1983
REVISED OCT., 1999

R LCR 12 4R ZPg A JPY

Section B:

Liber-30864

Page-5

WPA witnesses

NE 40.15' to P.K. nail in fence post (gone)

NE 114.30 to P.K. nail in Oak (gone)

E 33.25' to iron (gone)

SE 157.35' to P.K. nail in 20" Pear (gone)

SW 64.55' to N gate post (gone)

WPA witnesses

NE 39.94' to P.K. nail in fence post (gone)

NE 114.10 to P.K. nail in 20" Oak (gone)

SE 36.08' to P.K. nail in fence post (gone)

SE 157.35' to P.K. nail in 20" Pear (gone)

SW 64.84' to N gate post (gone)

WCRC witnesses 1973

Iron is 4.59' s of E./pav't

N 20.84' to "X" cut S rim of WGW in pav't (gone)

S 43.60' to Mon. (gone)

SW 43.94' to P.K. nail in DE pole (gone)

NW 122.12' to W corner of house # 21002 (gone)

CLAWAY &
RE

FEB 28 2000

SECTION