

SURVEY & REMONUMENTATION

APR 25 1995

RC 1591

L127806PA658

COMMISSION

LAND CORNER RECORDATION CERTIFICATE
Filing Requirement of Act 74, Mich. P.A. 1970

\$ 13.00 MISCELLANEOUS RECORDING
28 DEC 94 9:40 A.M.

For corners in

<u>WAYNE</u> (County)	Located in: Huron Township	Corner Code # <u>1-9</u>
1. Public Land Survey	T <u>4S</u> R <u>9E</u>	<u>1-9</u>
	T _____ R _____	_____
	T _____ R _____	_____
	T _____ R _____	_____
2. Property Controlling in Section	S _____ T _____ R _____	_____
	S _____ T _____ R _____	_____
3. Miscellaneous Property in Sec.	S _____ T _____ R _____	_____
	S _____ T _____ R _____	_____

RECORDED
FOREST E. YOUNGLOOD, REGISTER OF DEEDS
WAYNE COUNTY, MI

Compliance with
ACT 345, P.A. 1990

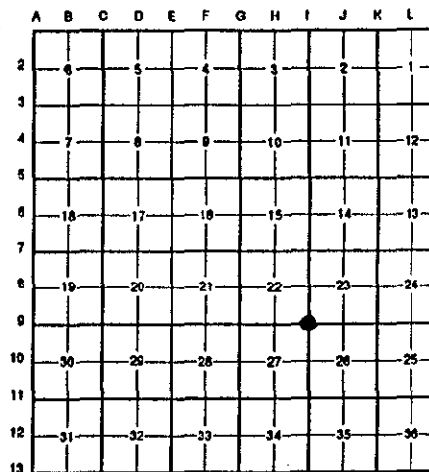
APPROVED ON: 12-7-94 *DBJ*
WAYNE COUNTY REMONUMENTATION
PEER GROUP COMMITTEE

Register of Deeds Stamp & File Number

4. Lot No. _____, Recorded Plat _____
5. Private Claims _____

I, Randy Kolehouse, in a field survey on July 27 19 94, do hereby certify that under requirements of P.A. 74 Michigan P.A. of 1970, the corner points mentioned in lines 1 and 2 above were in conformance with regulations and rules therefore as required in the current manual of survey instructions of the United States Department of the Interior, Bureau of Land Management or by a decree of a Court of Law and/or that the corner points mentioned in lines 3, 4 and 5 above were in conformance with the rules of the Michigan Board of Land Surveyors or by a Decree of a Court of Law; established, re-established, monumented, re-monumented, recovered, found as expressed below:

NOTE: Not more than 4 corners, all in the same town and range, may be recorded on this certificate.



A. Description of original monument and accessories and/or subsequent restoration:

I-9	1817	G.L.O. Notes	N/A	Post
	1930's	WPA Notes	N/A	Iron
	1964	D.E. Co. Notes	N/A	5/8" Rod in Hand Hole
	1973	WCRC Notes	N/A	Iron in Mon. Box
	1974	L.C.R.C. L. 18956 P. 718	Crossman	Iron Rod in Hand Hole
	1988	D.E. Co. Notes	N/A	1/2" Bar in Mon. Box

B. Description of corner evidence found and/or method applied in restoring or reestablishing corner:

I-9 Found 1/2" rebar in box at the C/L intersection of Huron River Drive (asphalt) running E-W and Merriman (gravel) running North which agrees with the following witnesses.

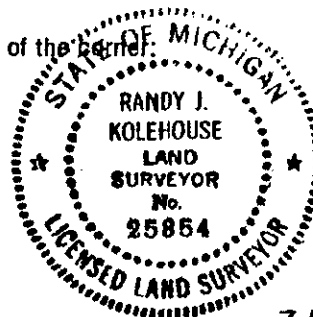
WPA	SSW Stone Post 34.19' (33.94' m)	L.C.R.C. L. 18956 P. 718	WCRC Cap & Nail W Side Util. Pole N 30° E 67.63' (67.61' m)
			WCRC Cap & Nail W Side Util. Pole S 06° W 28.58' (28.46' m)
D.E. Co. Survey Notes 1964	SSW Stone Post 34.19' (33.94' m)	WCRC	Nail & Tag NW Face D.E. Pole NE'y 67.63' (67.61' m)
			Nail & Tag W Face D.E. Pole South 28.58' (28.46' m)
			Nail & Tag NE Face D.E. Pole NW'y 83.32' (83.24' m)

Measures North to I-8 = 2586.59' (G.L.O. = 2640') (WPA = 2587.24' S-22 - 2587.38' S-23) (D.E. Co. 1964 = 2586.19' - 1988 = 2586.74')
Measures East to J-9 = 2648.99' (G.L.O. = 2640.99') (WPA = 2649.24' S-23 - 2649.51' S-26) (D.E. Co. 1964 = 2649.10')

C. Description of monument for corner and accessories established to perpetuate locating the position of the corner:

I-9 I set an aluminum cap stamped "Wayne Co. Remon." on existing iron in an existing monument box.

- Nail w/Tag "WCRC" W Face Util. Pole N 30° E 67.61'
- Nail w/Tag "WCRC" W Face Util. Pole S 06° W 28.46'
- P.K. NW Face Util. Pole S 51° W 44.07'
- Nail w/Tag "WCRC" NE Face Util. Pole N 37° W 83.24'



The selected location is accepted by the Contractor and is generally accepted by professional surveyors as the best available evidence of the position of the original corner.

Signed by Randy J. Kolehouse Date 12/14/94
Surveyor's Michigan License No. 25854