

FILE DO NOT MAIL

LAND CORNER RECORDATION CERTIFICATE SURVEY & REMONUMENTATION
Filing Requirement of Act 74, Mich. P.A. 1970

For corners in

<u>WAYNE</u> (County)	Located in: Huron Township	Corner Code # K-5
1. Public Land Survey	T <u>4S</u> R <u>9E</u>	<u>K-5</u>
	T _____ R _____	_____
	T _____ R _____	_____
	T _____ R _____	_____
2. Property Controlling in Section	S _____ T _____ R _____	_____
	S _____ T _____ R _____	_____
3. Miscellaneous Property in Sec.	S _____ T _____ R _____	_____
	S _____ T _____ R _____	_____

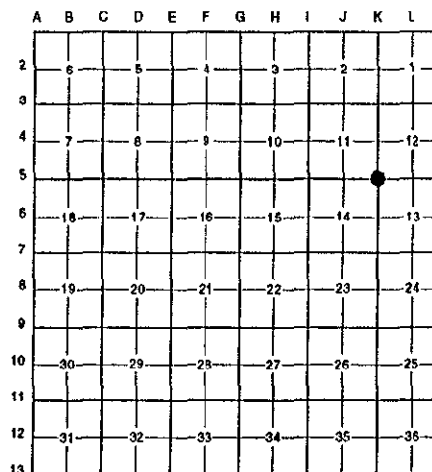
MAR 17 1998

SECTION Compliance with ACT 345, P.A. 1990

APPROVED ON: 12-1-97
WAYNE COUNTY REMONUMENTATION PEER GROUP COMMITTEE
Register of Deeds Stamp & File Number

4. Lot No. _____, Recorded Plat _____
5. Private Claims _____

I, Randy Kolehouse, in a field survey on November 8 19 97, do hereby certify that under requirements of P.A. 74 Michigan P.A. of 1970, the corner points mentioned in lines 1 and 2 above were in conformance with regulations and rules therefore as required in the current manual of survey instructions of the United States Department of the interior, Bureau of Land Management or by a decree of a Court of Law and/or that the corner points mentioned in lines 3, 4 and 5 above were in conformance with the rules of the Michigan Board of Land Surveyors or by a Decree of a Court of Law; established, re-established, monumented, re-monumented, recovered, found as expressed below:



NOTE: Not more than 4 corners, all in the same town and range, may be recorded on this certificate.

A. Description of original monument and accessories and/or subsequent restoration:

K-5	1. 1817	G.L.O.	Fletcher	Notes	Post
	2. 1928	Plat	Beckley	L. 60 P. 73	N/A
	3. 1930's	WPA Notes	N/A	Section Map and Ties	Iron
	4. 1973	W.C.R.C.	Coon	Witness Record	1/2" Iron in Box
	5. 1974	L.C.R.C.	Crossman #9428	L. 18922 P. 53	Mon. in Hand Hole
	6. 1977	Cert. Survey	Arthurs #11358	L. 19873 P. 382-383	N/A

B. Description of corner evidence found and/or method applied in restoring or reestablishing corner:

K-5 Found a concrete monument in a monument box at the C/L intersection of Middlebelt Road (asph.) running North and South and King Road (gravel) running East and West per the following witnesses:

Nail w/WCRC tag NW face util pole, M= N31W 54.15', R= 53.98' (4), 53.95' (5), 53.92' (6);
PK SW face util pole, M=S18E 63.30', R= 63.29' (4), 63.35' (5), 63.38' (6);
PK E face util pole, M= N43W 46.32', R= 45.30' (5)
PK E face util pole, M= N43E 46.40', R=44.78' (6)

\$4.00 REMONUMENTATION RECORDED
FOREST E. YOUNGBLOOD, REGISTER OF DEEDS
WAYNE COUNTY, MI
Receipt #43169
\$7.00 DEED

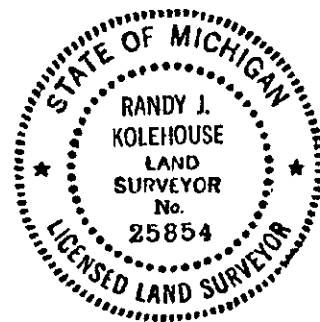
Measure West to J-5 = 2630.15' (WPA = 2629.85') (G.L.O. = 2648.25')
Measure North to K-4 = 2579.68' (WPA = 2579.32') (G.L.O. = 2640.0')
Measure East to L-5 = 2629.25' (WPA = 2628.80') (G.L.O. = 2636.7')
Measure South to K-6 = 2666.15' (WPA = 2665.78') (G.L.O. = 2640.0') (Arthurs = 2666.13')

C. Description of monument for corner and accessories established to perpetuate locating the position of the corner:

K-5 Placed a 2" diameter aluminum cap stamped "Wayne Co. Remon. #25854" on an existing 4" x 36" concrete monument in an existing monument box.

Nail w/W.C.R.C. Tag in NW Face Util. Pole N 31° E 54.15'
Nail w/W.C.R. Tag in NE Face Util. Pole S 18° E 63.29'
Nail w/W.C.R. Tag in N Face Util. Pole S 79° W 114.78'
Nail w/W.C.R. Tag in E Face Util. Pole N 43° W 46.44'

The selected location is accepted by the Contractor and is generally accepted by professional surveyors as the best available evidence of the position of the original corner.



Signed by Randy J. Kolehouse Date 12/16/97
Surveyor's Michigan License No. 25854