

FILE DO NOT MAIL

SURVEY & REMONUMENTATION

LAND CORNER RECORDATION CERTIFICATE  
Filing Requirement of Act 74, Mich. P.A. 1970

MAR 17 1998

For corners in

<u>WAYNE</u> (County)	Located in: Huron Township	Corner Code #
1. Public Land Survey	T <u>4S</u> R <u>9E</u>	<u>K-6</u>
	T _____ R _____	_____
	T _____ R _____	_____
	T _____ R _____	_____
2. Property Controlling in Section	S _____ T _____ R _____	_____
	S _____ T _____ R _____	_____
3. Miscellaneous Property in Sec.	S _____ T _____ R _____	_____
	S _____ T _____ R _____	_____

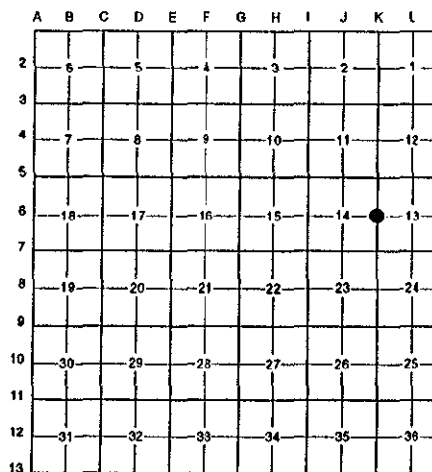
SECTION

Compliance with ACT 345, P.A. 1990

APPROVED ON: 12-1-97 *DRJ*  
WAYNE COUNTY REMONUMENTATION  
PEER GROUP COMMITTEE  
Register of Deeds Stamp & File Number

4. Lot No. \_\_\_\_\_, Recorded Plat \_\_\_\_\_  
5. Private Claims \_\_\_\_\_

I, Randy Kolehouse, in a field survey on November 8 19 97, do hereby certify that under requirements of P.A. 74 Michigan P.A. of 1970, the corner points mentioned in lines 1 and 2 above were in conformance with regulations and rules therefore as required in the current manual of survey instructions of the United States Department of the Interior, Bureau of Land Management or by a decree of a Court of Law and/or that the corner points mentioned in lines 3, 4 and 5 above were in conformance with the rules of the Michigan Board of Land Surveyors or by a Decree of a Court of Law; established, re-established, monumented, re-monumented, recovered, found as expressed below:



NOTE: Not more than 4 corners, all in the same town and range, may be recorded on this certificate.

A. Description of original monument and accessories and/or subsequent restoration:

K-6	1. 1817	G.L.O.	Fletcher	Notes	Post
	2. 1930's	WPA Notes	N/A	Section Map and Ties	Iron
	3. 1973	W.C.R.C.	Coon	Witness Records	Monument in Box
	4. 1973	Cert. Survey	Andrus #17609	L. 18661 P. 550-551	Monument in Box
	5. 1977	Cert. Survey	Arthurs #11358	L. 19873 P. 382-383	N/A

B. Description of corner evidence found and/or method applied in restoring or reestablishing corner:

K-6 Found a concrete monument in a monument box at the C/L of Middle Belt Road (asph.) running North and South per the following witnesses:

Nail w/WCRC tag SW face util pole, M= S31E 42.71', R= 42.60' (3), 42.65' (4), 42.64' (5);  
Center top nut hydrant, M= S82W 28.16', R= 28.20' (3), 28.14' (4 & 5);  
Nail S side 22" oak, M= N64W 38.79', R= 38.60' (3 & 5), 38.64' (4).

~~\$7.00 DEED~~  
RECORDED  
FOREST E. YOUNGBLOOD, REGISTER OF C  
WAYNE COUNTY, MI  
Receipt #43169

Measure North to K-5 = 2666.17' (WPA = 2665.78') (G.L.O. = 2640.0') (Arthurs = 2666.13')  
Measure South to K-7 = 2660.27' (WPA = 2660.26') (G.L.O. = 2640.0') (Andrus = 2660.22')

\$4.00 REMONUMENTATION  
\$7.00 DEED

C. Description of monument for corner and accessories established to perpetuate locating the position of the corner:

K-6 Placed a 2" diameter aluminum cap stamped "Wayne Co. Remon. #25854" on an existing concrete monument in an existing monument box.

- Nail w/W.C.R. Tag in W Face Util. Pole N 16° E 138.31'
- P.K. Nail in S Face Util. Pole S 85° E 59.77'
- Nail w/W.C.R. Tag in S Face Util. Pole S 85° E 59.76'
- Nail w/W.C.R.C. Tag in SW Face Util. Pole S 31° E 42.71'
- C/L Top Nut Hydrant S 82° W 28.16'
- Nail in S Side 20" Oak N 64° W 38.79'

The selected location is accepted by the Contractor and is generally accepted by professional surveyors as the best available evidence of the position of the original corner.



Signed by Randy J. Kolehouse Date 12/16/97  
Surveyor's Michigan License No. 25854