

DEC 21 1998

FILE DO NOT MAIL

SURVEY & REMONUMENTATION

MAR 02 1999

LAND CORNER RECORDATION CERTIFICATE
Filing Requirement of Act 74, Mich. P.A. 1970

Libert-30031

Page-763.0

For corners in

WAYNE (County)	Located in:	Huron Township	Corner Code #
1. Public Land Survey	T <u>4S</u>	R <u>9E</u>	<u>K-11 Ref. Mon.</u>
	T _____	R _____	_____
	T _____	R _____	_____
	T _____	R _____	_____
2. Property Controlling in Section	S _____	T _____	R _____
	S _____	T _____	R _____
3. Miscellaneous Property in Sec.	S _____	T _____	R _____
	S _____	T _____	R _____

SECTION

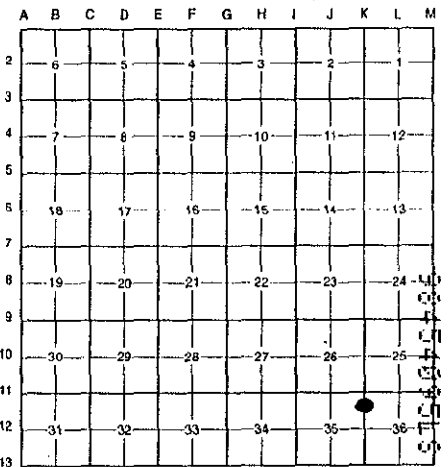
Compliance with
ACT 345, P.A. 1990

APPROVED ON: 12-15-98 *D.P.*
WAYNE COUNTY REMONUMENTATION
PEER GROUP COMMITTEE

Register of Deeds Stamp & File Number

- 4. Lot No. _____, Recorded Plat _____
- 5. Private Claims _____

I, Bruce Antcliff, in a field survey on October 29 19 98, do hereby certify that under requirements of P.A. 74 Michigan P.A. of 1970, the corner points mentioned in lines 1 and 2 above were in conformance with regulations and rules therefore as required in the current manual of survey instructions of the United States Department of the Interior, Bureau of Land Management or by a decree of a Court of Law and/or that the corner points mentioned in lines 3, 4 and 5 above were in conformance with the rules of the Michigan Board of Land Surveyors or by a Decree of a Court of Law; established, re-established, monumented, re-monumented, recovered, found as expressed below:



NOTE: Not more than 4 corners, all in the same town and range, may be recorded on this certificate.

A. Description of original monument and accessories and/or subsequent restoration:

K-11	1. 1817	G.L.O.	Fletcher	Notes	Post
	2. 1930's	WPA Notes	N/A	Section Map and Ties	N/A
	3. 1948	H.C.M.A. Land Acquisition Map	N/A	N/A	N/A

\$4.00 REMONUMENTATION

B. Description of corner evidence found and/or method applied in restoring or reestablishing corner:

K-11 This corner falls in the back-waters of the Huron River and is no longer accessible. WPA did not find this corner and are unclear what their bearings and distances refer to. I reestablished this corner location using the Huron-Clinton Metropolitan Authority survey map from 1948. I set a reference monument for this corner 865.00 feet south on the section line. This point falls on the east side of abandoned South Huron River Drive approx. 75 feet south of the waters edge.

\$10.00 DEED

RECORDED

FOREST E. YOUNGBLOOD, REGISTER OF DEEDS
WAYNE COUNTY, MI

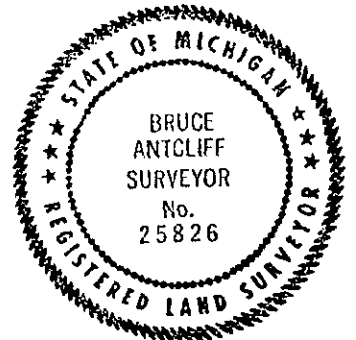
Receipt #101302

- Measure North to K-9 = 5360.90' (WPA = 5364.15')
- Measure South to K-12 = 2630.55' (WPA = 2626.91')(G.L.O. = 2640.00')(H.C.M.A. = 2631.69')
- Measure West to J-11 = 2645.33' (WPA = 2643.19')(G.L.O. = 2639.34')(H.C.M.A. = 2646.09')
- Measure East to L-11 = 2606.51' (WPA = 2604.83')

C. Description of monument for corner and accessories established to perpetuate locating the position of the corner:

K-11 Set a 4" x 36" concrete monument with a 1/2" rebar and a 2" diameter aluminum cap stamped "Ref. Mon, Wayne Co. Remon. #25826". (Not in roadway.)

- Set nail w/WCR tag W. side twin 6"-8" elm, N40°E, 18.85'
- Set nail w/WCR tag N. side 10" elm, East, 12.98'
- Set nail w/WCR tag W. side 15" poplar, S09°E, 73.25'
- Set nail w/WCR tag N. side 8" elm, S74°W, 38.68'



The selected location is accepted by the Contractor and is generally accepted by professional surveyors as the best available evidence of the position of the original corner.

Signed by Bruce Antcliff Date 12-17-98

Surveyor's Michigan License No. 25826

R LCR 10 4R 2Pg. U D P L

12/21/1998 09:22AM

SURVEY &
REMONUMENTATION

MAR 02 1999

SECTION

Liber-30031

Page-764.0

K-11
T4S, R9E
HURON TWP.
WAYNE CO.

