

\$ 4.00 REMONUMENTATION

\$ 7.00 DEED

26 DEC 96 12:42 P.M.

RECEI

A

LAND CORNER RECORDATION CERTIFICATE
Filing Requirement of Act 74, Mich. P.A. 1970

RECORDED

FOREST E. YOUNGBLOOD, REGISTER
WAYNE COUNTY, MI

EDS

For corners in

WAYNE

(County)

Located in: Huron
Township

Corner Code #

- 1. Public Land Survey T 4S R 9E L-5
T _____ R _____
T _____ R _____
T _____ R _____
- 2. Property Controlling in Section S _____ T _____ R _____
S _____ T _____ R _____
- 3. Miscellaneous Property in Sec. S _____ T _____ R _____
S _____ T _____ R _____
- 4. Lot No. _____, Recorded Plat _____
- 5. Private Claims _____

LI 29360 PA 572

Compliance with
ACT 345, P.A. 1990

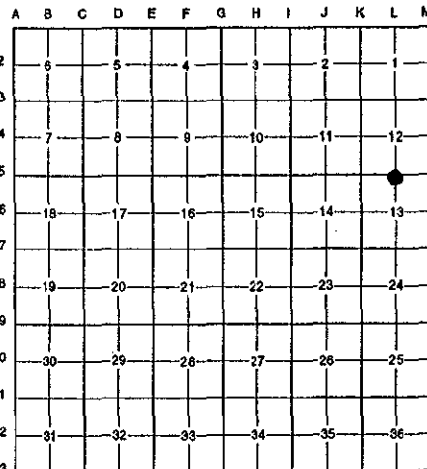
DRJ

APPROVED ON: DEC. 17, 1996
WAYNE COUNTY REMONUMENTATION
PEER GROUP COMMITTEE
Register of Deeds Stamp & File Number

96326788

I, Randy Kolehouse, in a field survey on December 4 19 96, do hereby certify that under requirements of P.A. 74 Michigan P.A. of 1970, the corner points mentioned in lines 1 and 2 above were in conformance with regulations and rules therefore as required in the current manual of survey instructions of the United States Department of the Interior, Bureau of Land Management or by a decree of a Court of Law and/or that the corner points mentioned in lines 3, 4 and 5 above were in conformance with the rules of the Michigan Board of Land Surveyors or by a Decree of a Court of Law; established, re-established, monumented, re-monumented, recovered, found as expressed below:

NOTE: Not more than 4 corners, all in the same town and range, may be recorded on this certificate.



A. Description of original monument and accessories and/or subsequent restoration:

L-5	1817	G.L.O.	Fletcher	Notes	Post
	1926	Gordon's Nat'l Park Sub.	N/A	L. 60 P. 33	N/A
	1930's	WPA Notes	N/A	Section Map and Ties	Monument
	1973	W.C.R.C.	Coon	Witness Record	3/4" Iron
	1973	Cert. Survey	Pitts #10702	L. 18571 P. 779-781	N/A
	1978	L.C.R.C.	Arthurs #11358	L. 20074 P. 308	Concrete Monument
	1978	Cert. Survey	Arthurs #11358	L. 20316 P. 830-831	Monument
	1978	Cert. Survey	Roskelly #10705	L. 20250 P. 379-380	N/A
	1978	Cert. Survey	Arthurs #11358	L. 20074 P.302-305	Monument
	1987	Cert. Survey	Crossman #9428	L. 23282 P. 879-881	Iron Pipe

B. Description of corner evidence found and/or method applied in restoring or reestablishing corner:

L-5 Found a 1/2" pipe 1.0' North of the C/L of King Road (gravel) running East and West per WPA witnesses. This iron also checks the Wayne County Road Commission witnesses and L.C.R.C. L. 20074 P. 308.

WPA Notes (1930's)	L.C.R.C. L. 20074 P. 308 (1978)
NW Corner House #28431 SSE 83.18' (m. 83.36)	Boat Spike W. Side Ediston Pole N 30.39' (m. 29.06' to Face)
Monument SW 72.52' (m. 72.76')	NW Corner House #28431 SE 83.33' (m. 83.36')
W.C.R.C. Witness Record (1973)	Cert. Survey L. 23282 P. 879-881 (1987)
Nail & Tag E. Face 12" Pine NNE 43.20' (42.80' - Stump)	P.K. NW Side 11" Tree N 75° E 71.78' (m. 71.81')
NW Corner House #28431 SE 83.18' (83.36')	P.K. NE Side Util. Pole S 40° E 109.82' (m. 109.92')
Monument SW 72.50' (72.76')	Top Nut Hydrant N 80° W 139.74' (m. 139.48')
Top Nut Hydrant NW 139.92' (139.48')	Bolt W Side D.E. Pole N 15 W 30.12' (m. 29.06 to Face)

Measure East to M-5 = 2632.07' (WPA = 2631.99') (G.L.O. = 2636.7') (Survey L. 20316 P. 830 = 2631.82')
Measure West to K-5 = 2629.22' (WPA = 2629.0') (G.L.O. = 2636.7')

C. Description of monument for corner and accessories established to perpetuate locating the position of the corner:

L-5 Replaced an existing 1/2" pipe with 1/2" rebar, brass "Wayne Co. Remon." disk and survey cap #25854.

P.K. Nail in NE Side Util. Pole S 26° E 109.92'	P.K. Nail in E. Face P. Pole N 07° E 29.07'
16d Spike in SE Face 15" Maple N 66° E 71.81'	Top Nut Fire Hydrant N 73° W 139.48'
Nail w/W.C.R.C. Tag in E Side Pine Stump N 10° E 42.80'	SE Corner of House #28431 South 83.36'

The selected location is accepted by the Contractor and is generally accepted by professional surveyors as the best available evidence of the position of the original corner.

Signed by Randy J. Kolehouse Date 12/24/96

Surveyor's Michigan License No. 25854

