

**LAND CORNER RECORDATION CERTIFICATE**  
**Filing Requirement of Act 74, Mich. P.A. 1970**

\$ 4.00 REMONUMENTATION  
 \$ 7.00 DEED

26 DEC 96 12:42 P.M. RECEI  
 RECORDED  
 FOREST E. YOUNGBLOOD, REGISTER  
 WAYNE COUNTY, MI  
**LI29360PA574**

A  
 EDG

For corners in

<u>WAYNE</u> (County)	Located in: Huron Township	Corner Code #
1. Public Land Survey	T <u>4S</u> R <u>9E</u>	<u>L-9</u>
	T _____ R _____	_____
	T _____ R _____	_____
	T _____ R _____	_____
2. Property Controlling in Section	S _____ T _____ R _____	_____
	S _____ T _____ R _____	_____
3. Miscellaneous Property in Sec.	S _____ T _____ R _____	_____
	S _____ T _____ R _____	_____
4. Lot No. _____, Recorded Plat _____		
5. Private Claims _____		

Compliance with  
 ACT 345, P.A. 1990

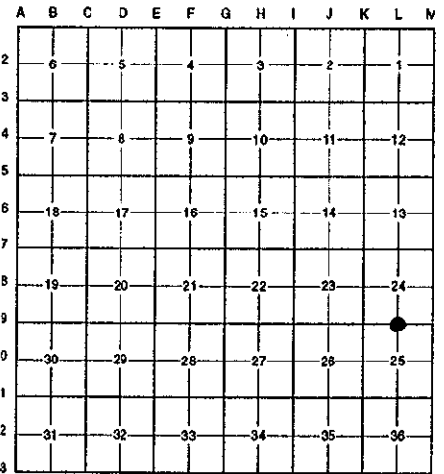
*D.P.J.*

APPROVED ON: DEC. 17, 1996  
 WAYNE COUNTY REMONUMENTATION  
 PEER GROUP COMMITTEE  
 Register of Deeds Stamp & File Number

96326790

I, Randy Kolehouse, in a field survey on December 3 19 96, do hereby certify that under requirements of P.A. 74 Michigan P.A. of 1970, the corner points mentioned in lines 1 and 2 above were in conformance with regulations and rules therefore as required in the current manual of survey instructions of the United States Department of the interior, Bureau of Land Management or by a decree of a Court of Law and/or that the corner points mentioned in lines 3, 4 and 5 above were in conformance with the rules of the Michigan Board of Land Surveyors or by a Decree of a Court of Law; established, re-established, monumented, re-monumented, recovered, found as expressed below:

NOTE: Not more than 4 corners, all in the same town and range, may be recorded on this certificate.



A. Description of original monument and accessories and/or subsequent restoration:

L-9	1817	G.L.O.	Fletcher	Notes	Post
	1930's	WPA Notes	N/A	Section Map and Ties	Iron
	1973	W.C.R.C.	Coon	Witness Record	1-1/4" Iron
	1974	L.C.R.C.	Crossman #9428	L. 18956 P. 720	Iron Pipe
	1979	Cert. Survey	Roskelly #18663	L. 20383 P. 861-862	1" Iron Pipe

B. Description of corner evidence found and/or method applied in restoring or reestablishing corner:

L-9 Found a 1/2" rebar in a 4" diameter concrete monument in a monument box at the C/L of Van Horn Road (asphalt) running East and West on line with a tree row running to the South per the following witnesses:

- |   |  |
|---|--|
| W.C.R.C. Witness Record (1973)  | Cert. Survey L. 20383 P. 861-862 (1979)      |
| Nail on Sun Oil Marker NE 31.29' (m. 36.31')  | Top Nut Hydrant S 70° E 143.76' (m. 143.77') |
| Top Nut Hydrant SE 143.60' (m. 143.77')   | Nail in D.E. Pole S 30.73' (m. 31.96')       |
| L.C.R.C. L. 18956 P. 720 (1974)   |  |
| Sun Pipe Line Marker N 30° E 27.90' (m. 36.31')   |  |
| Sun Pipe Line Marker N 43° E 31.00' (m. 40.90')   |  |
| P.K. W Side Util. Pole S 30.22' (m. 31.96')   |  |
| Measure East to M-9 = 2638.60' (W.P.A. = 2638.1') (G.L.O. = 2637.7')                                  |  |
| Measure West to K-9 = 2596.33' (WPA = 2596.2') (G.L.O. = 2637.7') (Survey L. 20383 P. 861 = 2596.24') |  |

C. Description of monument for corner and accessories established to perpetuate locating the position of the corner:

L-9 Set a brass "Wayne Co. Remon." disk and survey cap #25854 on existing concrete monument in an existing monument box.

- Nail w/W.C.R.C. Tag in Top 4" x 6" Sun Pipeline Marker N 36° E 40.90'
- P.K. Nail in Top 4" x 6" Sun Pipeline Marker N 21° E 36.31'
- Top Nut of Hydrant S 73° E 143.77'
- Capped Iron #9428 S 04° W 33.00'
- "+" in North Rim of Sanitary M/H S 25° W 27.00'
- Nail w/W.C.R.C. Tag in E Face Util. Pole S 05° W 31.99'
- Nail w/W.C.R.C. Tag in W Face Util. Pole N 13° W 37.48'
- Capped Rebar #26468 N 09° E 33.08'

The selected location is accepted by the Contractor and is generally accepted by professional surveyors as the best available evidence of the position of the original corner.



4R  
 7D  
*D.P.J.*

Signed by Randy J. Kolehouse Date 12/24/96

Surveyor's Michigan License No. 25854