

SURVEY & REMONUMENTATION

APR 25 1995

RC 1594

\$ 13.00 MISCELLANEOUS RECORDING
28 DEC 94 9:40 A.M. RECEIVED AND
FILED IN
OFFICE OF THE REGISTER OF DEEDS
WAYNE COUNTY, MICHIGAN

COMMISSION

LAND CORNER RECORDATION CERTIFICATE
Filing Requirement of Act 74, Mich. P.A. 1970

For corners in

<u>WAYNE</u> (County)	Located in: Huron Township	Corner Code #
1. Public Land Survey	T <u>4S</u> R <u>9E</u>	<u>M-5</u>
	T _____ R _____	_____
	T _____ R _____	_____
	T _____ R _____	_____
2. Property Controlling in Section	S _____ T _____ R _____	_____
	S _____ T _____ R _____	_____
3. Miscellaneous Property in Sec.	S _____ T _____ R _____	_____
	S _____ T _____ R _____	_____
4. Lot No. _____, Recorded Plat _____		
5. Private Claims _____		

LI27800 SPA661
Compliance with
ACT 345, P.A. 1990

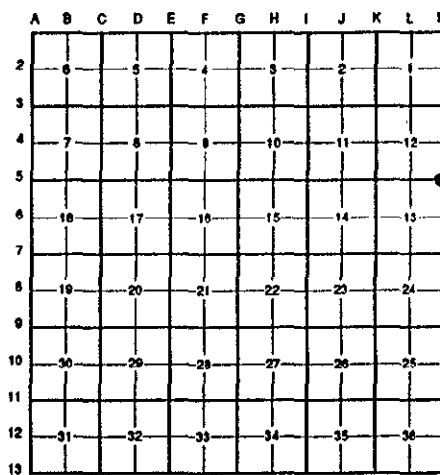
APPROVED ON: 12-7-94 *DRJ*
WAYNE COUNTY REMONUMENTATION
PEER GROUP COMMITTEE

Register of Deeds Stamp & File Number

RC 1594

I, Randy Kolehouse, in a field survey on October 20 19 94, do hereby certify that under requirements of P.A. 74 Michigan P.A. of 1970, the corner points mentioned in lines 1 and 2 above were in conformance with regulations and rules therefore as required in the current manual of survey instructions of the United States Department of the Interior, Bureau of Land Management or by a decree of a Court of Law and/or that the corner points mentioned in lines 3, 4 and 5 above were in conformance with the rules of the Michigan Board of Land Surveyors or by a Decree of a Court of Law; established, re-established, monumented, re-monumented, recovered, found as expressed below:

NOTE: Not more than 4 corners, all in the same town and range, may be recorded on this certificate.



A. Description of original monument and accessories and/or subsequent restoration:

M-5	1817	G.L.O. Notes	N/A	Post
	1930's	WPA Notes	N/A	Iron Over Stone
	1976	WCRC Notes	N/A	3/4" Iron Pipe in Mon. Box
	1978	L.C.R.C. L. 20074 P. 308	Arthurs	WCRC Hand Hole Monument
	1978	Cert. Survey L. 20074 P. 302-303	Arthurs	WCRC Monument
	1978	Cert. Survey L. 20316 P. 830	Arthurs	WCRC Hand Hole Mon.
	1979	L.C.R.C. L. 20523, P. 755	Soderberg	Conc. Mon. in Mon. Box
	1979	L.C.R.C. L. 20534 P. 780	Swanson	3/4" Iron Pipe in Mon. Box
	1987	Cert. Survey L. 23282 P. 879	Crossman	Conc. Mon. (Road Box)

B. Description of corner evidence found and/or method applied in restoring or reestablishing corner:

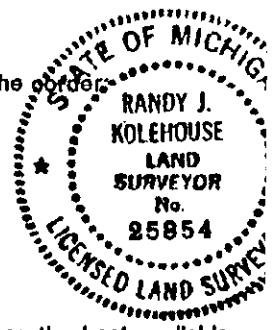
M-5 I found concrete monument in monument box 3' West of C/L of Inkster (asphalt) running N-S in C/L of King (gravel) running E-W which agrees with the following witnesses.

- L.C.R.C. L. 20074 P. 308 & Cert. Survey L. 20316 P. 830
Nail & Shinner SE Side Util. Pole NEly 56.43' (56.06' m)
Nail & Shinner SW Side Util. Pole SEly 61.47' (61.55' m)
Nail & Shinner SW Util. Pole NWly 45.00' (44.92' m)
 - L.C.R.C. L. 20534 P. 780 & WCRC Notes
Nail & Brass Tag SW Side P. Pole NW 45.04' (44.92' m)
Nail & Brass Tag SW Side P. Pole SE 61.39' (61.55' m)
Center of Fire Hydrant NNE 96.32' (96.35' m)
 - L.C.R.C. L. 20523 P. 755
Nail & Tag in D.E. Pole NE 56.37' (56.06' m)
Nail & Tag in D.E. Pole SE 61.55' (r & m)
Nail & Tag in D.E. Pole NW 44.98' (44.92' m)
 - Cert. Survey L. 23282 P. 879
Nail in Flasher MBT Pole N 55° E 56.18' (56.06' m)
Nail in WCRC Flasher D.E. Pole S 35° E 61.45' (61.55' m)
Nail in WCRC Flasher D.E. Pole N 60° W 44.97' (44.92' m)
- Measures N to M-4 = 2677.95' (G.L.O. = 2640') (WPA = 2678.12') (CS #1464 = 2678.02')
Measures S to M-7 = 5237.79' (G.L.O. = 5280') (WPA = 2537.56')

C. Description of monument for corner and accessories established to perpetuate locating the position of the corner:

M-5 Set aluminum cap stamped "Wayne Co. Remon." on existing monument in an existing monument box.

Nail w/Shinner SE Face Util. Pole N 38° 56.06'
P.K. w/Tag "WCRC" SW Face Util. Pole S 60° E 61.55'
Nail w/Tag "WCRC" SE Face Util. Pole S 56° W 48.27'
P.K. w/Tag "WCRC" SW Face Util. Pole N 41° W 44.92'



The selected location is accepted by the Contractor and is generally accepted by professional surveyors as the best available evidence of the position of the original corner.

Signed by Randy Kolehouse Date 12/14/94
Surveyor's Michigan License No. 25854