

LAND CORNER RECORDATION CERTIFICATE
Filing Requirement of Act 74, Mich. P.A. 1970

\$ 4.00 REMONUMENTATION
 \$ 7.00 DEED
 26 DEC 96 12:43 P.M. RECEI A
 RECORDED
 FOREST E. YOUNGBLOOD, REGISTER EDS
 WAYNE COUNTY, MI

For corners in

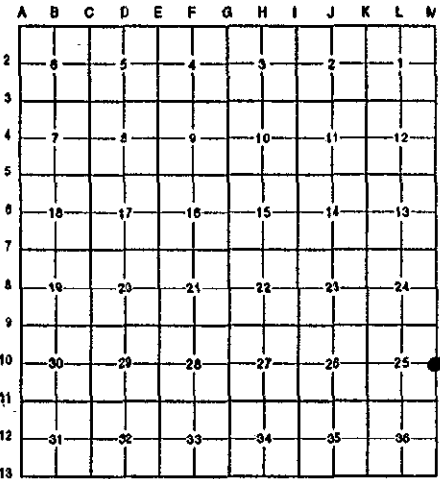
<u>WAYNE</u> (County)	Located in: Huron Township	Corner Code #
1. Public Land Survey	T <u>4S</u> R <u>9E</u>	<u>M-10</u>
	T <u>4S</u> R <u>10E</u>	<u>COMMON TO A-10</u>
2. Property Controlling in Section	S <u> </u> T <u> </u> R <u> </u>	
3. Miscellaneous Property in Sec.	S <u> </u> T <u> </u> R <u> </u>	
4. Lot No. <u> </u> , Recorded Plat <u> </u>		
5. Private Claims <u> </u>		

LI 29360 PA 579

Compliance with ACT 345, P.A. 1990
APPROVED ON: DEC. 17, 1996
WAYNE COUNTY REMONUMENTATION PEER GROUP COMMITTEE
 Register of Deeds Stamp & File Number

96326794

I, Randy Kolehouse, in a field survey on December 3 19 96, do hereby certify that under requirements of P.A. 74 Michigan P.A. of 1970, the corner points mentioned in lines 1 and 2 above were in conformance with regulations and rules therefore as required in the current manual of survey instructions of the United States Department of the Interior, Bureau of Land Management or by a decree of a Court of Law and/or that the corner points mentioned in lines 3, 4 and 5 above were in conformance with the rules of the Michigan Board of Land Surveyors or by a Decree of a Court of Law; established, re-established, monumented, re-monumented, recovered, found as expressed below:



NOTE: Not more than 4 corners, all in the same town and range, may be recorded on this certificate.

A. Description of original monument and accessories and/or subsequent restoration:

M-10	1817	G.L.O.	Fletcher	Notes	Post
	1930's	WPA Notes	N/A	Section Map and Ties	Iron
	1973	W.C.R.C.	Coon	Witness Record	Iron
	1975	Cert. Survey	Arthurs #11358	L. 19037 P. 100	N/A
	1977	L.C.R.C.	Wilkerson #21584	L. 19632 P. 929	Monument in Box
	1977	Cert. Survey	Arthurs #11358	L. 20025 P. 577-578	W.C.R.C. Monument
	1977	L.C.R.C.	Arthurs #11358	L. 20074 P. 309	W.C.R.C. Monument
	1977	Cert. Survey	Crossman #9428	L. 19636 P. 215	Monument in Box (T4S R10E)
	1979	Cert. Survey	Arthurs #11358	L. 20551 P. 931-932	Handhole Monument (T4S R10E)
	1979	L.C.R.C.	Arthurs #11358	L. 20551 P. 924	W.C.R.C. Handhole Monument (T4S R10E)

Records indicate this corner is common with A-10 T4S R10E.

B. Description of corner evidence found and/or method applied in restoring or reestablishing corner:

M-10 Found a 1/2" pipe in a monument box 1.5' West of C/L of Inkster Road (asphalt) running North and South. No WPA witnesses remain. Iron checks the following witnesses:

- | | |
|---|---|
| W.C.R.C. Witness Record (1973) | L.C.R.C. L. 19632 P. 929 (1977) - A-10 T4S R10E |
| MBT Pole NW Side NE 101.45' (m. 102.60') | W.C.R.C. Cap W Side MBT Pole N 20° E 101.32' (m. 102.60') |
| C/L Hydrant SE 103.49' (m. 103.41') | Fence Corner N 80° E 35.50' (m. 36.45') |
| | Top Nut Hydrant S 40° E 103.50' (m. 103.41') |
| Cert. Survey L. 19636 P. 215 (1977) | L.C.R.C. L. 20074 P. 309 (1977) - M-10 T4S R9E |
| Nail & Cap in MBT Pole N 20° E 101.32' (m. 102.60') | Util. Pole NE 101.28' (m. 102.60') |
| Fence Corner N 80° E 35.50' (m. 36.45') | C/L Hydrant SE 103.53' (103.41') |
| Top Nut Hydrant S 40° E 103.50' (m. 103.41') | |

Measure North to M-9 = 2660.59' (WPA = 2660.01') (G.L.O. = 2640.0') (Survey L. 20551 P. 931 = 2660.42')
 Measure South to M-11 = 2607.73' (WPA = 2607.66') (G.L.O. = 2640.0')

C. Description of monument for corner and accessories established to perpetuate locating the position of the corner:

M-10 Replaced the existing 1/2" pipe with a 1/2" rebar, brass "Wayne Co. Remon." disk and survey cap #25854 in an existing monument box.

- | | |
|--|--|
| P.K. Nail in W Face Lt. Pole N 20° E 102.60' | P.K. Nail in E Face 15" Oak N 17° W 83.38' |
| Top Nut of Hydrant S 20° E 103.41' | Fence Post (4" x 4") N 80° E 36.45' |
| P.K. Nail in E Face P. Pole S 24° W 93.50' | Iron #11358 West 32.98' |

The selected location is accepted by the Contractor and is generally accepted by professional surveyors as the best available evidence of the position of the original corner.



Signed by Randy J. Kolehouse Date 12/24/96
 Surveyor's Michigan License No. 25854