

LAND CORNER RECORDATION CERTIFICATE
 Filing Requirement of Act 74, Mich. P.A. 1970

LI 29360 PA 582

For corners in

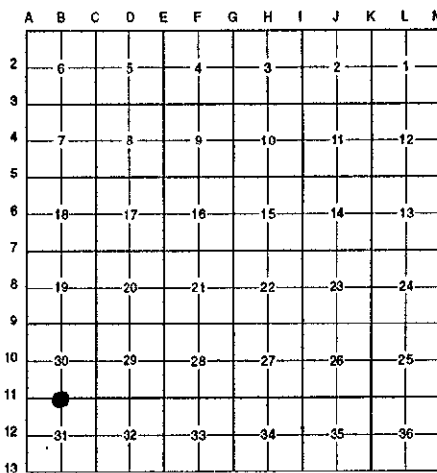
<u>WAYNE</u> (County)	Located in: City of Flat Rock	Corner Code # B-11
1. Public Land Survey	T <u>4S</u> R <u>10E</u>	<u>B-11</u>
	T _____ R _____	_____
	T _____ R _____	_____
	T _____ R _____	_____
2. Property Controlling in Section	S _____ T _____ R _____	_____
	S _____ T _____ R _____	_____
3. Miscellaneous Property in Sec.	S _____ T _____ R _____	_____
	S _____ T _____ R _____	_____
4. Lot No. _____, Recorded Plat _____		
5. Private Claims _____		

Compliance with
 ACT 345, P.A. 1990 *R.J.*
 APPROVED ON: DEC 17, 1996
 WAYNE COUNTY REMONUMENTATION
 PEER GROUP COMMITTEE
 Register of Deeds Stamp & File Number

96326797

I, Randy Kolehouse, in a field survey on November 27 19 96, do hereby certify that under requirements of P.A. 74 Michigan P.A. of 1970, the corner points mentioned in lines 1 and 2 above were in conformance with regulations and rules therefore as required in the current manual of survey instructions of the United States Department of the interior, Bureau of Land Management or by a decree of a Court of Law and/or that the corner points mentioned in lines 3, 4 and 5 above were in conformance with the rules of the Michigan Board of Land Surveyors or by a Decree of a Court of Law; established, re-established, monumented, re-monumented, recovered, found as expressed below:

NOTE: Not more than 4 corners, all in the same town and range, may be recorded on this certificate.



A. Description of original monument and accessories and/or subsequent restoration:

B-11	1817	G.L.O.	Fletcher	Notes	Post
	1930's	WPA Notes	N/A	Section Map and Ties	Iron

B. Description of corner evidence found and/or method applied in restoring or reestablishing corner:

B-11 Found a 4" diameter steel pipe with a 1/2" pipe set in concrete in the center in a farm field per two remaining WPA witnesses. No other information is on record.

WPA Notes (1930's)
 12" Hickory S 75.68' (m. 75.57")
 14" Walnut N 52.73' (m. 52.70')

\$ 4.00 REMONUMENTATION
 \$ 7.00 DEED
 26 DEC 96 12:44 P.M. RECEI A
 RECORDED
 FOREST E. YOUNGBLOOD, REGISTER EDS
 WAYNE COUNTY, MI

Measure West to A-5 2660.48' (WPA = 2660.8') (G.L.O. = 2640.0')
 Measure East to C-5 2654.94' (WPA = 2655.2') (G.L.O. = 2640.0')

C. Description of monument for corner and accessories established to perpetuate locating the position of the corner:

B-11 Set brass "Wayne Co. Remon." disk and survey cap #25854 on existing iron.

P.K. Nail in W Side 18" Elm N 30° E 97.04'
 P.K. Nail w/MDSH Tag in E Face 30" Walnut N 07° E 52.70'
 P.K. Nail in W Face 18" Elm N 06° W 90.25'
 P.K. Nail in W Face 24" Hickory S 02° W 75.57'

The selected location is accepted by the Contractor and is generally accepted by professional surveyors as the best available evidence of the position of the original corner.

Signed by Randy J. Kolehouse Date 12/24/96
 Surveyor's Michigan License No. 25854

