

LAND CORNER RECORDATION CERTIFICATE
Filing Requirement of Act 74, Mich. P.A. 1970

LI29360PA584

For corners in

| | | |
|---------------------------------------|------------------------------------|---------------|
| <u>WAYNE</u> (County) | Located in: Brownstown Township | Corner Code # |
| 1. Public Land Survey | T <u>4S</u> R <u>10E</u> | <u>C-6</u> |
| | T _____ R _____ | _____ |
| | T _____ R _____ | _____ |
| | T _____ R _____ | _____ |
| 2. Property Controlling in Section | S _____ T _____ R _____ | _____ |
| | S _____ T _____ R _____ | _____ |
| 3. Miscellaneous Property in Sec. | S _____ T _____ R _____ | _____ |
| | S _____ T _____ R _____ | _____ |

Compliance with
ACT 345, P.A. 1990 *POJ*

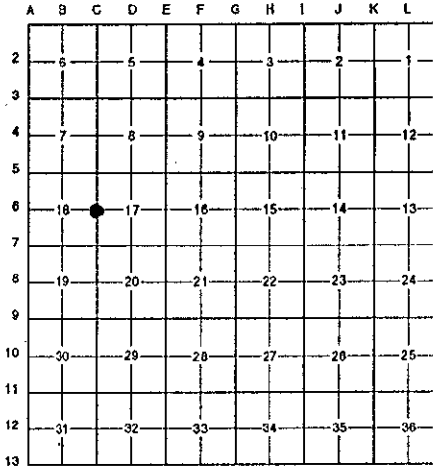
APPROVED ON: DEC. 17, 1996

**WAYNE COUNTY REMONUMENTATION
 PEER GROUP COMMITTEE
 Register of Deeds Stamp & File Number**

96326799

4. Lot No. _____, Recorded Plat _____
 5. Private Claims _____

I, Randy Kolehouse, in a field survey on November 27 19 96, do hereby certify that under requirements of P.A. 74 Michigan P.A. of 1970, the corner points mentioned in lines 1 and 2 above were in conformance with regulations and rules therefore as required in the current manual of survey instructions of the United States Department of the interior, Bureau of Land Management or by a decree of a Court of Law and/or that the corner points mentioned in lines 3, 4 and 5 above were in conformance with the rules of the Michigan Board of Land Surveyors or by a Decree of a Court of Law; established, re-established, monumented, re-monumented, recovered, found as expressed below:



NOTE: Not more than 4 corners, all in the same town and range, may be recorded on this certificate.

A. Description of original monument and accessories and/or subsequent restoration:

| C-6 | 1817 | G.L.O. | Fletcher | Notes | Post |
|-----|--------|--------------|----------------|----------------------|--------------------------------|
| | 1930's | WPA Notes | N/A | Section Map and Ties | Iron |
| | 1973 | Cert. Survey | Gilmore | L. 18448 P. 889 | N/A |
| | 1973 | W.C.R.C. | Coon | Witness Record | Iron - 2 |
| | 1974 | Cert. Survey | ?? | L. 18912 P. 382 | Iron Pipe Stake |
| | 1976 | Cert. Survey | Stanley #12031 | L. 19443 P. 29-31 | N/A |
| | 1978 | L.C.R.C. | Arthurs #11358 | L. 20074 P. 306 | \$ 4.00 REMONUMENTATION |

B. Description of corner evidence found and/or method applied in restoring or reestablishing **FOREST E. YOUNGLOOD, REGISTER WAYNE COUNTY, MI**

C-6 Found a 1/2" pipe in the C/L of Beech Daly Road (gravel) running North and South per the following witnesses:

| | |
|--|---|
| W.C.R.C. Witness Record (1973) | L.C.R.C. L. 20074 P. 306 (1978) |
| NW Side 26" Oak NE 26.02' (m. 25.90') | W.C.R.C. Tag NW Side Tree ENE 26.04 (m. 25.90') |
| Nail NW Side 18" Oak NNE 31.45' (m. 31.33') | |
| Nail SW Side D.E. Pole NW 85.05' (m. 83.77') | |
| C/L Hyd. NW 101.36' (m. 101.27') | |
| Nail NW Side D.E. Pole SW 78.81' (m. 80.08') | |

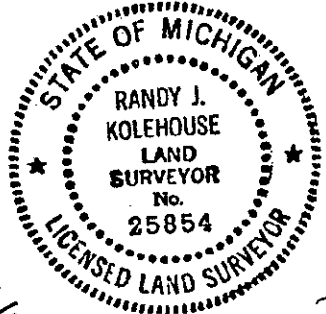
(Continued on Back)

C. Description of monument for corner and accessories established to perpetuate locating the position of the corner:

C-6 Replaced an existing 1/2" pipe with 1/2" rebar, brass "Wayne Co. Remon." disk and suvey cap #25854.

Top Nut of Hydrant N 20° W 101.27'
 P.K. Nail in E Face Util. Pole N 22° W 83.77'
 P.K. Nail in NW Face 24" Oak N 50° East 31.33'
 P.K. Nail in NNW Face 30" Oak N 70° E 25.90'
 P.K. Nail in E Face Util. Pole S 28° W 80.08'
 1/2" Rebar North 28.31'

The selected location is accepted by the Contractor and is generally accepted by professional surveyors as the best available evidence of the position of the original corner.



Signed by Randy J. Kolehouse Date 12/24/96
 Surveyor's Michigan License No. 25854

Part B (Continued)

Records from the 1930's (WPA Survey Notes) indicate that two corners have existed and been used continually for C-6. Both corners are on a straight line M/L between C-5 and C-7. These corners are approximately 31.4' apart North and South per WPA surveys and 28.3' apart North and South per W.C.R.C. witness ties (1973). Per WPA survey the South iron (W 1/4 Section 17) is within 1.0' \pm of being at the midpoint between C-5 and C-7 based on measurements shown on the map of survey.

WPA = C-6 to C-7 = 2614.25'
WPA = C-6 to C-5 = 2612.55'
Total Distance C-5 to C-7 = 5226.78 Midpoint = 2613.39'

Found a 1/2" iron pipe at the South location per W.C.R.C. witnesses in the C/L of Beech Daly Road (gravel) running North and south on line of a fence running East. (W 1/4 corner Section 17)

Measure North from this iron to C-5 2612.65' + 0.10' from WPA
Measure South from this iron to C-7 2614.44' + 0.19' from WPA
Measure angle at C-6 N-E-S 180° 00' 44"
WPA = 180° 00' 30"

Accepted iron as 1/4 corner common to Sections 17 and 18 as it checks closely to the midpoint of Section line which is the location of this corner per the G.L.O. Also set iron 28.31' North per Wayne County Road Commission notes as a property controlling corner for Section 18.

Measure South to C-7 2614.44' (WPA Sec. 18 = 2645.47') (WPA Sec. 17 = 2614.23) (G.L.O. = 2640.0')
Measure North to C-5 2612.65' (WPA Sec. 18 = 2579.82') (WPA Sec. 17 = 2612.55') (G.L.O. = 2640.0')

