

**LAND CORNER RECORDATION CERTIFICATE**  
Filing Requirement of Act 74, Mich. P.A. 1970

LI 29360 PA 587

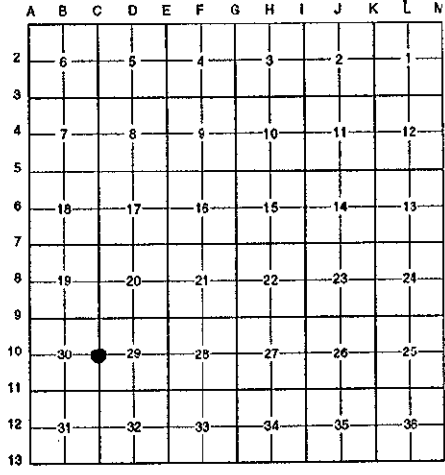
For corners in

<u>WAYNE</u> (County)	Located in: City of Flat Rock	Corner Code #
1. Public Land Survey	T <u>4S</u> R <u>10E</u>	<u>C-10</u>
	T _____ R _____	_____
	T _____ R _____	_____
	T _____ R _____	_____
2. Property Controlling in Section	S _____ T _____ R _____	_____
	S _____ T _____ R _____	_____
3. Miscellaneous Property in Sec.	S _____ T _____ R _____	_____
	S _____ T _____ R _____	_____
4. Lot No. _____, Recorded Plat _____		
5. Private Claims _____		

Compliance with  
**ACT 345, P.A. 1990** *J.P.J.*  
**APPROVED ON: DEC. 17, 1996**  
**WAYNE COUNTY REMONUMENTATION  
PEER GROUP COMMITTEE**  
Register of Deeds Stamp & File Number

96326801

I, Randy Kolehouse, in a field survey on November 27 19 96, do hereby certify that under requirements of P.A. 74 Michigan P.A. of 1970, the corner points mentioned in lines 1 and 2 above were in conformance with regulations and rules therefore as required in the current manual of survey instructions of the United States Department of the interior, Bureau of Land Management or by a decree of a Court of Law and/or that the corner points mentioned in lines 3, 4 and 5 above were in conformance with the rules of the Michigan Board of Land Surveyors or by a Decree of a Court of Law; established, re-established, monumented, re-monumented, recovered, found as expressed below:



**NOTE: Not more than 4 corners, all in the same town and range, may be recorded on this certificate.**

**A. Description of original monument and accessories and/or subsequent restoration:**

C-10	1817	G.L.O.	Fletcher	Notes	Post
	1930's	WPA Notes	N/A	Section Map and Ties	4"x4" Stake
	N/A	W.C.R.C.	N/A	Witness Maps	4"x4" Stake

**B. Description of corner evidence found and/or method applied in restoring or reestablishing corner:**

C-10 Found a 3/4" pipe 0.2' ± South of the back curb for the apartment complex drive. The WPA witnesses were approximately 300' to 700' from the corner and do not remain. No other information is on record. The location of this iron checks the location of the corner shown in the WPA survey of Section 29 within 0.2' ± North and South and 0.2' East and West as calculated using the measured bearings on the west line of Section 29 compared to the WPA bearings.

\$ 4.00 REMONUMENTATION  
 \$ 7.00 DEED  
 26 DEC 96 12:45 P.M. RECEI A  
 RECORDED  
 FOREST E. YOUNGBLOOD, REGISTER EDS  
 WAYNE COUNTY, MI

Measure North to C-9 2649.54' (WPA = 2649.75') (G.L.O. = 2640.0')  
 Measure South to C-11 2649.76' (WPA = 2649.71') (G.L.O. = 2640.0')  
 Measure Angle at C-10 S-W-N = 179° 23' 09"  
 WPA Angle at C-10 S-W-N = 179° 28' 10"

**C. Description of monument for corner and accessories established to perpetuate locating the position of the corner:**

C-10 Set brass "Wayne Co. Remon" disk and survey cap #25854 on existing 3/4" pipe.

SE Corner of Apt. Building #10 N 30° W 83.13'  
 SW Corner of Apt. Building #9 N 32° E 73.09'  
 P.K. Nail in N Face P. Pole N 84° W 32.79'  
 Top Nut of Hydrant S 83° E 59.90'

The selected location is accepted by the Contractor and is generally accepted by professional surveyors as the best available evidence of the position of the original corner.



Signed by Randy J. Kolehouse Date 12/24/96  
 Surveyor's Michigan License No. 25854