

DEC 21 1998

SURVEY & REMONUMENTATION

Liber-30031

FILE DO NOT MAIL

MAR 02 1999

LAND CORNER RECORDATION CERTIFICATE
Filing Requirement of Act 74, Mich. P.A. 1970

SECTION

For corners in

WAYNE (County)	Located in:	City of Flat Rock	Corner Code #
1. Public Land Survey	T 4S	R 10E	C-12
	T	R	
	T	R	
	T	R	
2. Property Controlling in Section	S	T	R
	S	T	R
3. Miscellaneous Property in Sec.	S	T	R
	S	T	R

Compliance with
ACT 345, P.A. 1990

APPROVED ON: 12-15-98 *DBJ*

WAYNE COUNTY REMONUMENTATION
PEER GROUP COMMITTEE

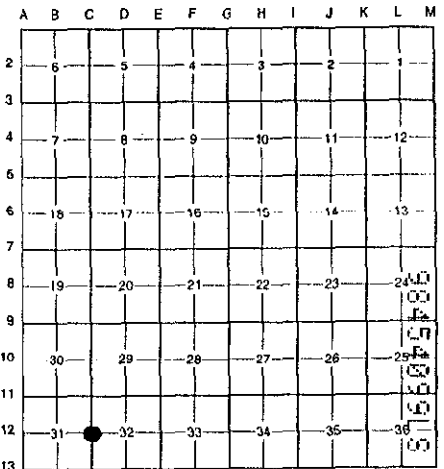
Register of Deeds Stamp & File Number

Page-773.0

- 4. Lot No. _____, Recorded Plat _____
- 5. Private Claims _____

I, Bruce Antcliff, in a field survey on September 30 19 98, do hereby certify that under requirements of P.A. 74 Michigan P.A. of 1970, the corner points mentioned in lines 1 and 2 above were in conformance with regulations and rules therefore as required in the current manual of survey instructions of the United States Department of the interior, Bureau of Land Management or by a decree of a Court of Law and/or that the corner points mentioned in lines 3, 4 and 5 above were in conformance with the rules of the Michigan Board of Land Surveyors or by a Decree of a Court of Law; established, re-established, monumented, re-monumented, recovered, found as expressed below:

NOTE: Not more than 4 corners, all in the same town and range, may be recorded on this certificate.



A. Description of original monument and accessories and/or subsequent restoration:

C-12	1.	1817	G.L.O.	Fletcher	Notes	Post
	2.	1930's	WPA Notes	N/A	Section Map and Ties	Iron
	3.	1926	Gordon Dale Sub.	Beckley	L. 60 P. 88	N/A
	4.	1940	Assessor's Flat Rock Plat #2	Miller	L. 67 P. 42	N/A
	5.	1972	Cert. Survey #123	Carlson #14759	N/A	N/A
	6.	N/A	Cert. Survey #114	Carlson #14759	N/A	N/A

B. Description of corner evidence found and/or method applied in restoring or reestablishing corner:

C-12 Found a 1/2" pipe; also found a 1/2" rebar in a 4" dia. concrete monument, both at the Northwest corner of high school football field on line of an old fence running East. The Carlson surveys seem to verify the pipe by his dimension to C-13 but his dimension to C-11 doesn't check either location. Checks of WPA dimensions could be used to verify either location. Found a witness from the WPA survey which verifies the monument as the correct location. Also, tied to Assessor's Flat Rock Plat #2 and Gordon-Dale Sub. and measured to the monument within a few hundredths. Based on the witness from WPA and the ties to the plats, I am accepting the found monument as the correct location for this corner.

Fnd. PK-ESE Face 30" Hickory N 17° E 4.57' (2 = 4.82')

Measure North to C-11 = 2663.11' (WPA = 2663.78' & 2654.50')(G.L.O. = 2640.00')(Carlson = 2661.70')

Measure South to C-13 = 2654.41' (WPA = 2654.75' & 2654.50')(G.L.O. = 2640.00')(Carlson = 2653.89')

(Gordon-Dale Sub. = 2654.85')

\$7.00 DEED

\$4.00 REMONUMENTATION
RECORDED
FOREST E. YOUNGBLOOD, REGISTER OF DEEDS
WAYNE COUNTY, MI

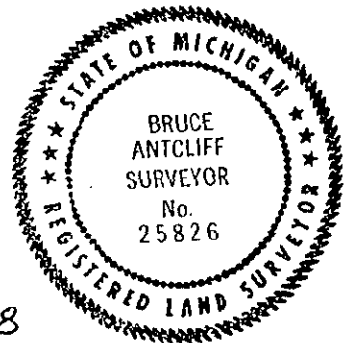
Receipt #101302

C. Description of monument for corner and accessories established to perpetuate locating the position of the corner:

C-12 Placed a 2" diameter aluminum cap stamped "Wayne Co. Remon. #25826" on rebar of an existing concrete monument. (Not in roadway.)

- Fnd. PK ESE Face 30" Hickory N 17° E 4.57'
- Fnd. 1/2" Rebar S 20° W 0.62'
- Nail w/W.C.R. Tag N Side 6" Thornapple East 18.47'
- Nail w/W.C.R. Tag W Side 7" Walnut S 05° W 25.04'
- Nail w/W.C.R. Tag N Side 12" Twin Oak S 87° W 12.33'

The selected location is accepted by the Contractor and is generally accepted by professional surveyors as the best available evidence of the position of the original corner.



Signed by Bruce Antcliff Date 12-17-98

Surveyor's Michigan License No. 25826

R. LCR 7 4R 1PG U. DBJ

12/21/1998 09:23AM