

DEC 2, 1998

SURVEY & REMONUMENTATION

MAR 02 1999

FILE DO NOT REMOVE

LAND CORNER RECORDATION CERTIFICATE
Filing Requirement of Act 74, Mich. P.A. 1970

SECTION

For corners in

WAYNE (County)	Located in: City of Flat Rock	Corner Code #
1. Public Land Survey	T 4S R 10E	D-11
	T R	
	T R	
	T R	
2. Property Controlling in Section	S T R	
	S T R	
3. Miscellaneous Property in Sec.	S T R	
	S T R	

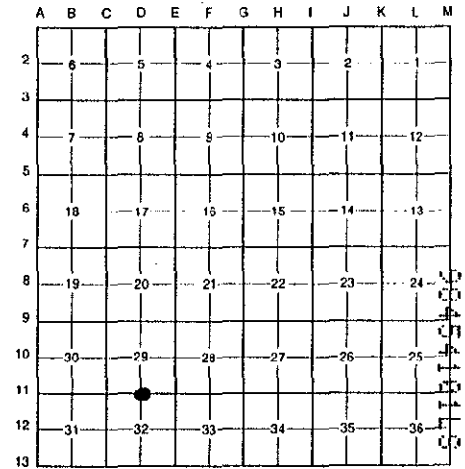
Compliance with
ACT 345, P.A. 1990

APPROVED ON: 12-15-98 *DBA*
WAYNE COUNTY REMONUMENTATION
PEER GROUP COMMITTEE

Register of Deeds Stamp & File Number

- 4. Lot No. _____, Recorded Plat _____
- 5. Private Claims _____

\$4.00 REMONUMENTATION



I, Bruce Antcliff, in a field survey on October 23 19 98, do hereby certify that under requirements of P.A. 74 Michigan P.A. of 1970, the corner points mentioned in lines 1 and 2 above were in conformance with regulations and rules therefore as required in the current manual of survey instructions of the United States Department of the interior, Bureau of Land Management or by a decree of a Court of Law and/or that the corner points mentioned in lines 3, 4 and 5 above were in conformance with the rules of the Michigan Board of Land Surveyors or by a Decree of a Court of Law; established, re-established, monumented, re-monumented, recovered, found as expressed below:

NOTE: Not more than 4 corners, all in the same town and range, may be recorded on this certificate.

A. Description of original monument and accessories and/or subsequent restoration:

D-11	1. 1817	G.L.O.	Fletcher	Notes	Post
	2. 1930's	WPA Notes	N/A	Section Map and Ties	Reset Iron
	3. 1940	Wagar Farms Subdivision	Murdoch	L. 67 P. 93	N/A
	4. 1971	Cert. Survey #114	Carlson #14759	N/A	Iron Bar in Mon. Box
	5. 1973	W.C.R.C.	N/A	Witness Records	Mon. in Box
	6. 1976	L.C.R.C.	Hooth	L. 19461 P. 702	Mon. in Box

B. Description of corner evidence found and/or method applied in restoring or reestablishing corner:

D-11 Found empty monument box which did not fit the found witnesses or the distances from C-11 or E-11. I reestablished the corner location from witnesses and from the Carlson certified survey. The corner falls 1.55' west of the existing monument box. Ties to Wagar Farms Sub. neither confirms nor disproves either position for the corner. I accepted the position west of the monument box as the correct location of this corner.

\$7.00 DEED

RECORDED
FOREST E. YOUNGBLOOD, REGISTER OF DEEDS
WAYNE COUNTY, MI
Receipt #101302

- Fnd. Nail w/W.C.R.C. Tag NW Side Utility Pole N 81° E 147.55' (5, 6 = 147.30')
- Fnd. P.K. w/Tag "CPA #34970" N Side Utility Pole S 70° E 120.50' (5 = 120.27')(6 = 121.21')
- Fnd. Nail w/M.D.S.H. Tag E Face Utility Pole S 02° E 104.56' (6 = 104.61')
- E Rim Stm. M/H (No "X") S 35° W 26.84' (6 = 27.35', No "x" found)

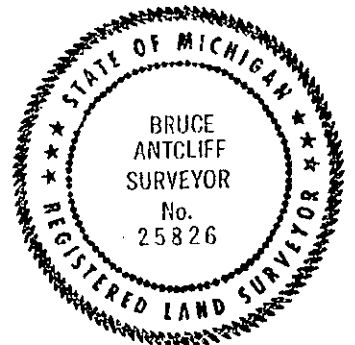
Measure West to C-11 = 2651.35' (WPA = 2650.37')(G.L.O. = 2636.37')(Carlson = 2651.47')(Wagar Farms = 2652.00')

Measure East to E-11 = 2597.45' (WPA = 2597.49')(G.L.O. = 2636.37')(Carlson = 2597.49')

C. Description of monument for corner and accessories established to perpetuate locating the position of the corner:

D-11 Set a 1/2" rebar with a 2" diameter aluminum cap stamped "Wayne Co. Remon. #25826. Also set a new monument box. (In concrete pavement.)

- Fnd. Nail w/W.C.R.C. Tag NW Side Utility Pole N 81° E 147.55'
- Fnd. P.K. w/Tag "CPA #34970" N Side Utility Pole S 70° E 120.50'
- Fnd. P.K. E Face Utility Pole S 20° E 82.16'
- Fnd. Nail w/M.D.S.H. Tag E Face Utility Pole S 02° E 104.56'



The selected location is accepted by the Contractor and is generally accepted by professional surveyors as the best available evidence of the position of the original corner.

Signed by Bruce Antcliff Date 12-17-98

Surveyor's Michigan License No. 25826

R LCR 7 4R 1Pg U D.O.L.

Liberal-30031

Page-775.0

12/21/1998

09:23AM