

DEC 02 1993

COMMISSION

RC 1102

LAND CORNER RECORDATION CERTIFICATE
Filing Requirement of Act 74, Mich. P.A. 1970

LI 26951 PA 723

For corners in

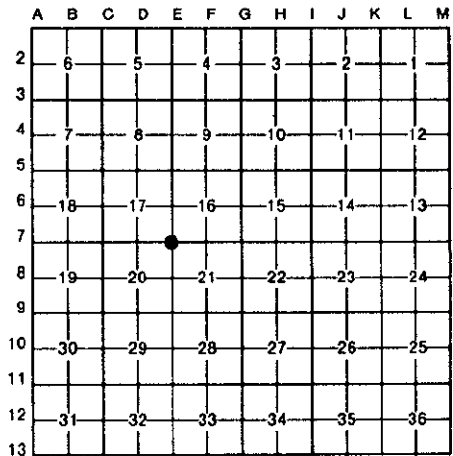
Table with columns: Wayne (County), Located In, Corner Code #. Includes entries for Public Land Survey, Property Controlling in Section, and Miscellaneous Property in Sec.

Compliance with ACT 345, P.A. 1990
APPROVED ON: 10-28-93 MGR
WAYNE COUNTY REMONUMENTATION PEER GROUP COMMITTEE
Register of Deeds Stamp & File Number

RC 1102

- 4. Lot No. , Recorded Plat
5. Private Claims

I, Bruce Antcliff, in a field survey on August 20, 1993, do hereby certify that under requirements of P.A. 74, Michigan P.A. of 1970, the corner points mentioned in lines 1 and 2 above were in conformance with regulations and rules therefore as required in the current manual of survey instructions of the United States Department of the Interior, Bureau of Land Management or by a decree of a Court of Law and/or that the corner points mentioned in lines 3, 4 and 5 above were in conformance with the rules of the Michigan Board of Land Surveyors or by a Decree of a Court of Law; established, re-established, monumented, re-monumented, recovered, found as expressed below:



NOTE: Not more than 4 corners, all in the same town and range, may be recorded on this certificate.

A. Description of original monument and accessories and/or subsequent restoration:

- GLO-Post
WPA (1930'S) - Cross
Edison (1987) - Rod in Mon. Box
"Ambit" Survey (1992) - Iron in Mon. Box

B. Description of corner evidence found and/or method applied in restoring or reestablishing corner:

Mon. in Mon. Box / No. Cover- Measured to S1/4 S.16 & S1/4 S.17 - Distances checked well with WPA Surveys, Edison Survey and "Ambit" Survey.

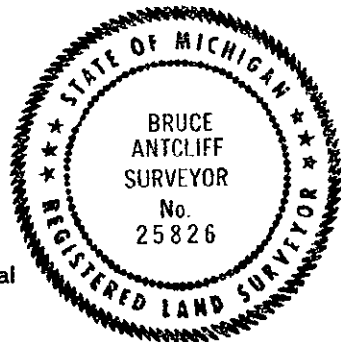
Vertical stamp: REGISTERED LAND SURVEYOR, WAYNE COUNTY, MICHIGAN, dated 10 PM 2:19

C. Description of monument for corner and accessories established to perpetuate locating the position of the corner:

Set Wayne County Remonumentation Marker and Cap #25826 on existing monument.

Witnesses

- P.K. NW'ly side of light pole, NNE, 59.38'
"+ W'ly side storm manhole, NE, 28.34'
P.K. NE'ly side newer P.P., SE, 45.05'
WCRC Nail & Tag, E'ly side P.P., SW, 34.85'



The selected location is accepted by the Contractor and is generally accepted by professional surveyors as the best available evidence of the position of the original corner.

Signed by Bruce Antcliff Date 11-10-93
Surveyor's Michigan License No. 25826

Handwritten initials: MGR