

DEC 21 1998

MAR 02 1999

FILE DO NOT MAIL

SECTION LAND CORNER RECORDATION CERTIFICATE Filing Requirement of Act 74, Mich. P.A. 1970

\$4.00 REMONUMENTATION RECORDED FOREST E. YOUNGBLOOD, REGISTER OF DEEDS WAYNE COUNTY, MI Receipt #101302

Libert 0001 Page-777.0

For corners in

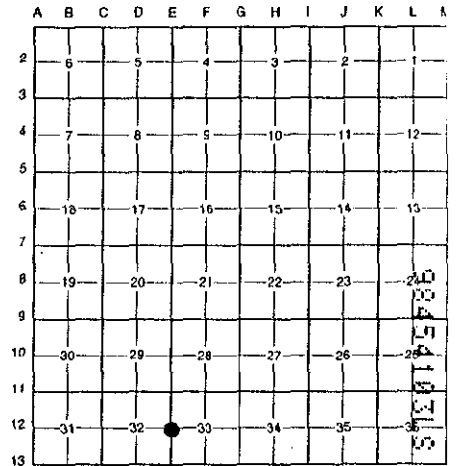
Table with columns: WAYNE (County), Located in: City of Flat Rock, Corner Code #. Rows include Public Land Survey, Property Controlling in Section, Miscellaneous Property in Sec.

Compliance with ACT 345, P.A. 1990 APPROVED ON: 12-15-98 WAYNE COUNTY REMONUMENTATION PEER GROUP COMMITTEE Register of Deeds Stamp & File Number

4. Lot No. Recorded Plat 5. Private Claims

\$7.00 DEED

I, Bruce Antcliff, in a field survey on October 29, 1998, do hereby certify that under requirements of P.A. 74 Michigan P.A. of 1970, the corner points mentioned in lines 1 and 2 above were in conformance with regulations and rules therefore as required in the current manual of survey instructions of the United States Department of the Interior, Bureau of Land Management or by a decree of a Court of Law and/or that the corner points mentioned in lines 3, 4 and 5 above were in conformance with the rules of the Michigan Board of Land Surveyors or by a Decree of a Court of Law; established, re-established, monumented, re-monumented, recovered, found as expressed below:



NOTE: Not more than 4 corners, all in the same town and range, may be recorded on this certificate.

A. Description of original monument and accessories and/or subsequent restoration:

Table with columns: E-12, 1-9, 1817-1979, G.L.O., WPA Notes, L.C.R.C., Cert. Survey, W.C.R.C., Fletcher, Eisenach, Lesnick, Carlson #14759, Arthurs #11358, Notes, Post. Includes entries like '1817 G.L.O. Fletcher Notes Post'.

B. Description of corner evidence found and/or method applied in restoring or reestablishing corner:

E-12 Found a 1/2" rebar inside of a 1/2" pipe in a 4" diameter concrete monument at the C/L intersection of Cahill Road (gravel) running North and South and Roche Road (gravel) running East and on line with iron west and row of stakes marked "PL" running west. P.K. W Face Lt. Pole N 56° E 64.43' (5,6,7=64.40) "+ N Rim Water M/H S 30° E 59.59' (8=59.62) Nail w/W.C.R.C. Tag SE Face Lt. Pole N 56° E 64.64' (8=64.77) "+ E Rim San. M/H S 48° W 28.37' (8=27.92) NW Cor. House S 45° E 112.05' (5,6,7=112.50)'

Measure North to E-11 = 2615.77' (WPA = 2615.75')(G.L.O. = 2640.00')(Carlson = 2615.75')(Arthurs = 2615.82') (Chapman Farms Sub. No. 3 = 2616.34') Measure South to E-13 = 2621.80' (WPA = 2621.01')(G.L.O. = 2640.00')(Chapman Farms Sub. No. 2 = 2621.25') (Carlson = 2621.80')

C. Description of monument for corner and accessories established to perpetuate locating the position of the corner:

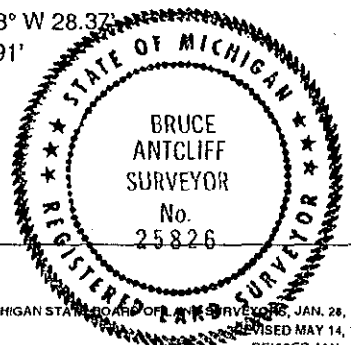
E-12 Set a 2" diameter aluminum cap stamped "Wayne Co. Remon. #25826" on rebar in an existing 4" x 36" concrete monument. (In gravel road.)

Fnd. Nail w/Shiner W Face Lt. Pole N 56° E 64.41' Fnd. 1/2" Pipe S 45° E 73.38' Fnd. P.K. W Face Lt. Pole N 56° E 64.43' Fnd. "+ N Rim Water M/H S 30° E 59.59' Set Nail w/W.C.R.C. Tag SE Face Lt. Pole N 56° E 64.64' Fnd. "+ E Rim San. M/H S 48° W 28.37' Fnd. 1/2" Pipe N 60° E 74.01' Fnd. 1/2" Rebar N 84° W 32.91' NW Cor. House S 45° E 112.05'

The selected location is accepted by the Contractor and is generally accepted by professional surveyors as the best available evidence of the position of the original corner.

Signed by Bruce Antcliff Date 12-17-98

Surveyor's Michigan License No. 25826



R LCR 7 4R 1P6 U D.D.