

**SURVEY & REMONUMENTATION**

**RC 1609**

\$ 13.00 MISCELLANEOUS RECORDING  
 28 DEC 94 9:42 A.M. RECEIPT 160  
 RECORDED  
 FOREST T. YOUNG, 2000, SERIES OF DEEDS  
 WAYNE COUNTY, MI

APR 25 1995

**LAND CORNER RECORDATION CERTIFICATE**  
 Filing Requirement of Act 74, Mich. P.A. 1970

**COMMISSION**

For corners in

WAYNE  
 (County)

Located in: Brownstown Township Corner Code # \_\_\_\_\_

1. Public Land Survey	T <u>4S</u>	R <u>10E</u>	<u>J-3</u>
	T _____	R _____	_____
	T _____	R _____	_____
	T _____	R _____	_____
2. Property Controlling in Section	S _____	T _____	R _____
	S _____	T _____	R _____
3. Miscellaneous Property in Sec.	S _____	T _____	R _____
	S _____	T _____	R _____

4. Lot No. \_\_\_\_\_, Recorded Plat \_\_\_\_\_

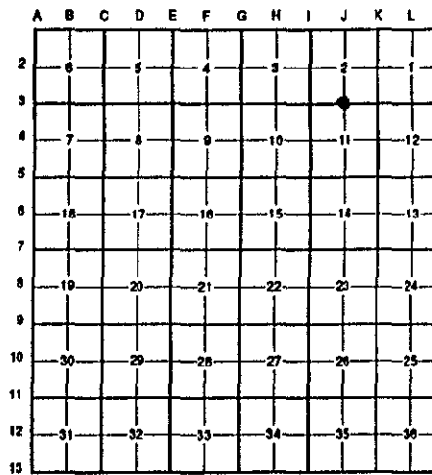
5. Private Claims \_\_\_\_\_

**L127800PA676**

Compliance with ACT 345, P.A. 1990  
 APPROVED ON: 12-7-94 *DBJ.*  
 WAYNE COUNTY REMONUMENTATION PEER GROUP COMMITTEE

Register of Deeds Stamp & File Number

**RC 1609**



I, Randy Kolehouse, in a field survey on October 24 19 94, do hereby certify that under requirements of P.A. 74 Michigan P.A. of 1970, the corner points mentioned in lines 1 and 2 above were in conformance with regulations and rules therefore as required in the current manual of survey instructions of the United States Department of the Interior, Bureau of Land Management or by a decree of a Court of Law and/or that the corner points mentioned in lines 3, 4 and 5 above were in conformance with the rules of the Michigan Board of Land Surveyors or by a Decree of a Court of Law; established, re-established, monumented, re-monumented, recovered, found as expressed below:

**NOTE: Not more than 4 corners, all in the same town and range, may be recorded on this certificate.**

**A. Description of original monument and accessories and/or subsequent restoration:**

J-3	1817	G.L.O. Notes	N/A	Post
	1930's	WPA Notes	N/A	Iron
	1973	WCRC Notes	N/A	Monument in Box
	1977	L.C.R.C. L. 19848 P. 709 RC #536	Wozniak	Monument in Well
	1992	WCRC Notes	N/A	1/2" Iron in Mon. Box

**B. Description of corner evidence found and/or method applied in restoring or reestablishing corner:**

J-3 - I found 1/2" rebar in a monument box at C/L of Sibley Road (asphalt) running E-W which agrees with the following witnesses.

L.C.R.C. #536	WCRC Notes 1973
S 7° E 32.29' C/L Top of Hydrant (32.15' m)	Nail & Tag D.E. Pole North 32.85' (32.89' m)
S 31° W 51.62' C/L Top of Hydrant (51.62' m)	Nail & Tag Bell Pole SW'y 59.78' (59.95' m)
North 32.88' P.K. E Face D.E. Pole (32.89' m)	C/L Top Bolt Hyd. SW'y 51.65' (51.62' m)

WCRC Notes 1992  
 WCRC Tag in D.E. Pole N'y 52.14' (r & m)  
 WCRC Tag in D.E. Pole S'y 52.35' (52.33' m)  
 C/L Hyd. SE'y 32.20' (32.15' m)  
 C/L Hyd. SW'y 51.65' (51.62' m)

Measures East to K-3 = 2636.81' (G.L.O. = 2635.38') (WPA = 2636.72' S-2 & 2636.75' S-11)  
 Measures West to I-3 = 2639.90' (G.L.O. = 2635.38') (WPA = 2640.18' S-2 & 2640.06' S-11)

**C. Description of monument for corner and accessories established to perpetuate locating the position of the corner:**

J-3 Set aluminum cap stamped "Wayne Co. Remon." on existing 1/2" rebar in an existing monument box.

- C/L Top Nut Hyd. S 05° E 32.15'
- C/L Top Nut Hyd. S 30° W 51.62'
- Nail w/Tag "WCRC" NW Face Util. Pole S 60° W 59.95'
- Nail w/Tag "WCRC" W Face Util. Pole N 2° W 32.89'
- Nail w/Tag "WCRC" E Face Util. Pole North 52.14'
- Nail w/Tag "WCRC" E Face Util. Pole S 08° W 52.33'

The selected location is accepted by the Contractor and is generally accepted by professional surveyors as the best available evidence of the position of the original corner.

Signed by Randy J. Kolehouse Date 12/14/94  
 Surveyor's Michigan License No. 25854

