

APR 05 1996

**LAND CORNER RECORDATION CERTIFICATE
Filing Requirement of Act 74, Mich. P.A. 1970**

For corners in **COMMISSION**

<u>Wayne Co.</u> (County)	Located in: City of Riverview	Corner Code # K-2
1. Public Land Survey	T <u>4 S</u> R <u>10 E</u>	<u> </u>
	T <u> </u> R <u> </u>	<u> </u>
	T <u> </u> R <u> </u>	<u> </u>
	T <u> </u> R <u> </u>	<u> </u>
2. Property Controlling in Section	S <u> </u> T <u> </u> R <u> </u>	<u> </u>
	S <u> </u> T <u> </u> R <u> </u>	<u> </u>
3. Miscellaneous Property in Sec.	S <u> </u> T <u> </u> R <u> </u>	<u> </u>
	S <u> </u> T <u> </u> R <u> </u>	<u> </u>

LIBER 28451 PAGE 499

Compliance with
ACT 345, P.A. 1990
APPROVED ON: 11-28-95
**WAYNE COUNTY REMONUMENTATION
PEER GROUP COMMITTEE**

Register of Deeds Stamp & File Number

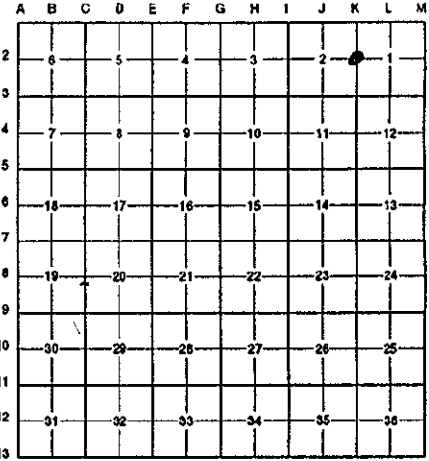
4. Lot No. _____, Recorded Plat _____
5. Private Claims _____

I, Randy Kolehouse, in a field survey on Nov. 3 1995, do hereby certify that under requirements of P.A. 74 Michigan P.A. of 1970, the corner points mentioned in lines 1 and 2 above were in conformance with regulations and rules therefore as required in the current manual of survey instructions of the United States Department of the interior, Bureau of Land Management or by a decree of a Court of Law and/or that the corner points mentioned in lines 3, 4 and 5 above were in conformance with the rules of the Michigan Board of Land Surveyors or by a Decree of a Court of Law; established, re-established, monumented, re-monumented, recovered, found as expressed below:

NOTE: Not more than 4 corners, all in the same town and range, may be recorded on this certificate.

A. Description of original monument and accessories and/or subsequent restoration:

K-2	1817	GLO	Notes	Post
	1930's	WPA	Unknown	Iron
			Section map and ties	



\$ 4.00 REMONUMENTATION
\$ 7.00 DEED
8 DEC 95 12:38 P.M. RECEIP
RECORDED
FOREST E. YOUNGBLOOD, REGISTER
WAYNE COUNTY, MI

45262454

B. Description of corner evidence found and/or method applied in restoring or reestablishing corner:

K-2 No corner was found. Used WPA distances and bearings to proportion the corner between the found NE Cor. Sec. 2 & SE Cor. Sec. 2. This corner fell 0.36' E and 0.37' S of a fence post of a north/south fence.

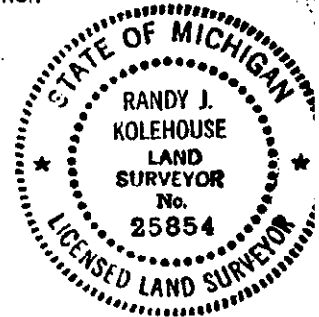
Measures north to K-1 T4S,R10E = 2646.00' (GLO = 2647.92'), (WPA = 2646.10'sec.1, 2646.15'sec.2)
Measures south to K-3 T4S,R10E = 2669.99' (GLO = 2640'), (WPA = 2669.23'sec1, 2669.14'sec.2)

C. Description of monument for corner and accessories established to perpetuate locating the position of the corner:

K-2 I set a 2" aluminum cap "Wayne County Remonumentation #25854" on a concrete monument.

NOT IN PAVED ROADWAY

PK Nail and WCR tag in SE. face 14" Ash N40°E 32.54'
PK Nail and WCR tag in SE. face 10" Ash N65°E 33.80'
PK Nail and WCR tag in N. face 22" Oak S85°E 41.51'
PK Nail and WCR tag in N. face 8" Crab Apple S79°E 20.85'



The selected location is a careful and faithful reestablishment at the position of the original corner.

Signed by Randy J. Kolehouse Date 12/8/95
Surveyor's Michigan License No. 25854