

FILE DO NOT MAIL

LAND CORNER RECORDATION CERTIFICATE
Filing Requirement of Act 74, Mich. P.A. 1970

For corners in

Wayne (County) Located In: Gross Ile Twp. Corner Code #
1. Public Land Survey T R
2. Property Controlling in Section S T R
3. Miscellaneous Property in Sec. S PC T 4 S R 11 E # 6

Liber-30864 Page-22
99595873 12/30/1999
F.E. Youngblood, Wayne Co. Register of Deeds
RDANDSYL

Compliance with ACT 345, P.A. 1990
APPROVED ON: 12-8-99
WAYNE COUNTY REMONUMENTATION PEER GROUP COMMITTEE
Register of Deeds Stamp & File Number

4. Lot No. , Recorded Plat

5. Private Claims 551/552 int. of Park Lane and Ferry Roads in Gross Ile Twp.

I, Michael S. Hoben in a field survey on Sept. 22, 1999 do hereby state that under requirements of P.A. 74, Michigan P.A. of 1970, the corner points mentioned in lines 1 and 2 above were in conformance with regulations and rules therefore as required in the current manual of survey instructions of the United States Department of the Interior, Bureau of Land Management or by a decree of a Court of Law and/or that the corner points mentioned in lines 3, 4 and 5 above were in conformance with the rules of the Michigan Board of Land Surveyors or by a Decree of a Court of Law; established, re-established, monumented, recovered, found as expressed below:

NOTE: Not more than 2 corners, all in the same town and range, may be recorded on this certificate.

A. Description of original monument and accessories and/or subsequent restoration:

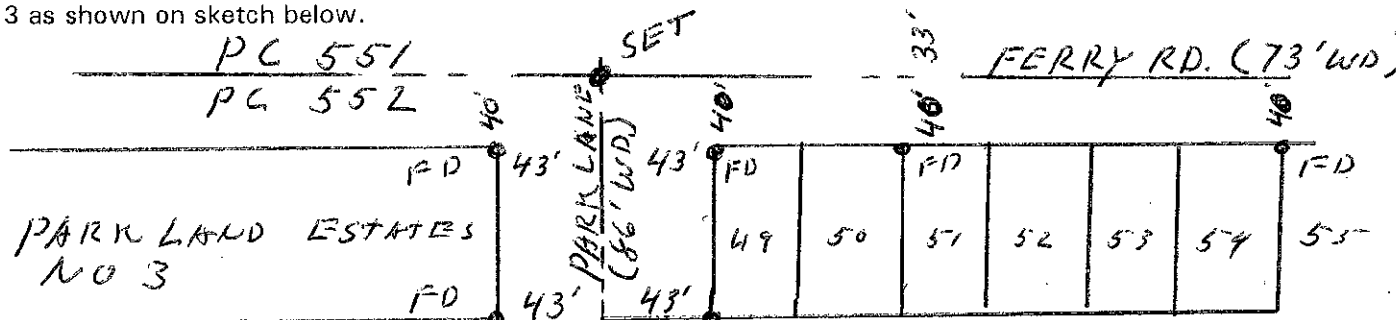
- Private Claim 1810 Greely
Sprague's Subdivision 1906 Bromn
Private Plat of Private Claim 551
Parkland Estates 1966 Koopman
Parkland Estates No. 3 1968 Koopman
LCRC 1992 B. Arthurs
LCRC 1993 T. Condon
LCRC 1994 K. Wilkerson
Tax Maps 1999

Grid table with columns A-L and rows 1-13

SECTION
FEB 28 2000

B. Description of corner evidence found and/or method applied in restoring or reestablishing corner:

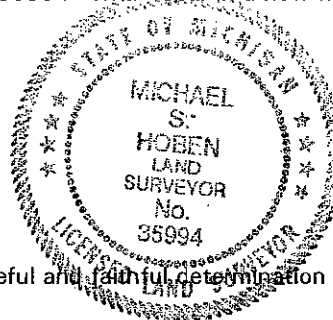
We established This corner from found property corners on lots 48, 49, 50, 51, 52, 53, 54 and 55 of Parklane Estate No. 3 as shown on sketch below.



B. Description of monument for corner and accessories established to perpetuate locating the position of the corner:

I set a 2" aluminum cap stamped "Wayne County Monument MI Act 345 #35994" on a rebar in a new mon. box.

- N 25°E 45.27' Set WCRC tag in NE face of pp.
N 45°W 65.93' Set WCRC tag in SW face 18" Oak.
S 50°W 65.28' Set "X" in NW rim of manhole.
S 11°E 91.80' Set WCRC tag in S side pp.



The selected location for this Property Controlling Monument is accepted as a careful and faithful determination of the position as indicated.

Signed by Michael S. Hoben

Date Dec 27, 1999

Surveyor's Michigan License No. 35994

FORM APPROVED BY MICHIGAN STATE BOARD OF LAND SURVEYORS, JAN. 28, 1971

REVISED MAY 14, 1975
REVISED JAN., 1983
REVISED OCT., 1999

R LCR 9 4R 1 P 2 A J P 2