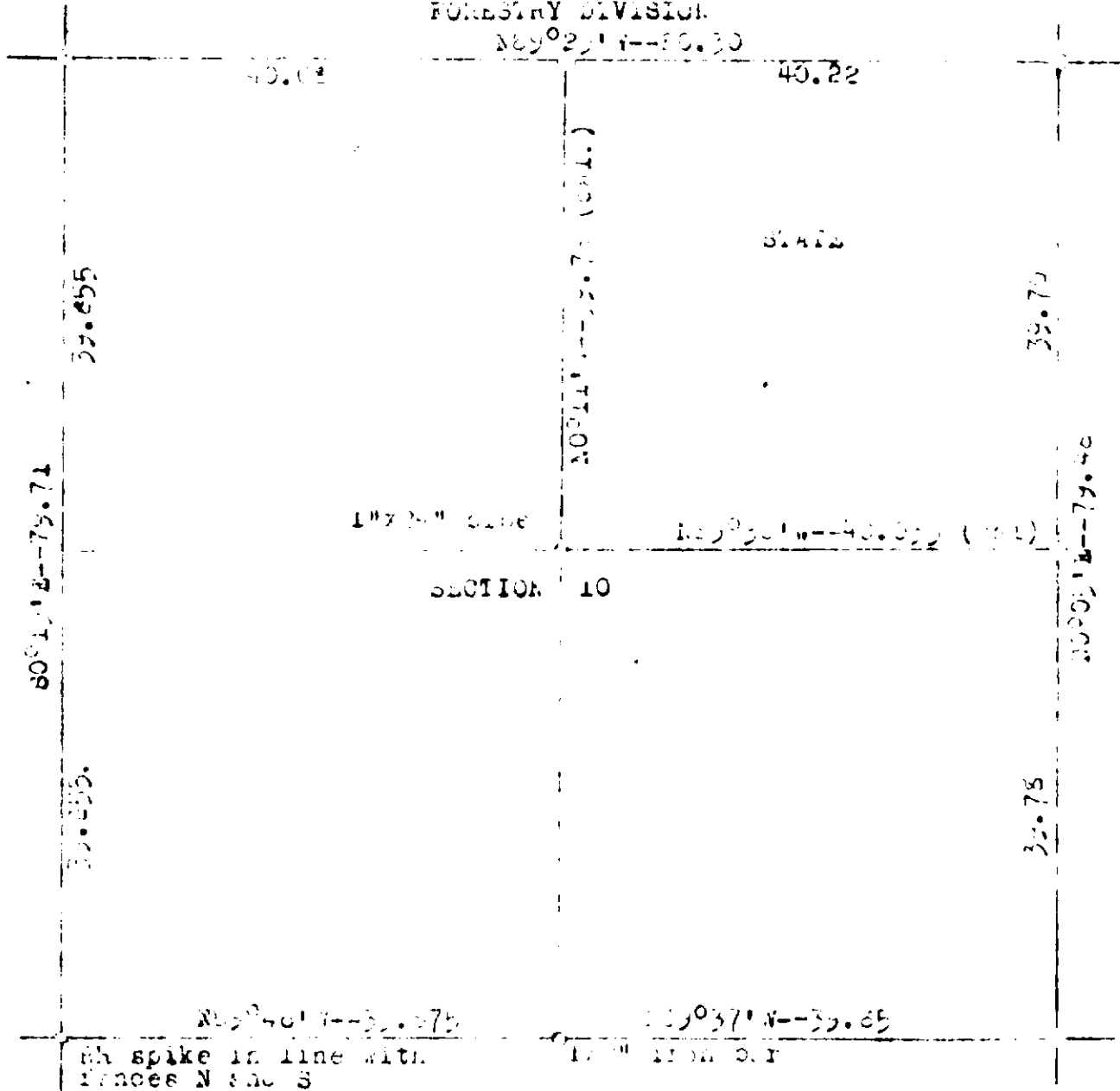


Lansing

Map of
SECTION 10, T22N, R3E
FOR
FORESTRY DIVISION
N89°22'14"-86.30



Iron spike in line with
fences N and S

This section was subdivided on the basis of the corners found or established in a partial retrace of this township. See corner records for detailed explanation of the identification or establishment of the various corners. The 1/4 lines were run and the center post established at the intersection of the true lines. The interior measurements of the lines of this section were calculated in reference to the measurements of the boundary.

Survey and Map by

Kenneth J. Petting
Registered Land Surveyor
Forestry Division
Dept. of Conservation

(- 1" scale w/ 1/4" lines map