

MICHIGAN  
DEPARTMENT OF CONSERVATION  
FORESTRY DIVISION

# LAND CORNER RECORD

T. 22 N.R. 9 W

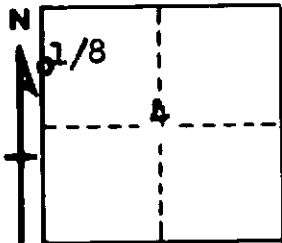
Wexford COUNTY

DESCRIPTION OF CORNER North 1/8 corner common to Sections 4 and 5

CORNER MONUMENT 1" x 2 1/4" pipe

DATE MONUMENT PLACED AND WITNESSED 9-6-61

WITNESSES TO CORNER.....



1 1/4" W. Pine - S11W - 37.9 feet

4" W. Pine - S66E - 9.9 feet

AND

CIRCLE CORNER REGISTERED

DESCRIPTION IN DETAIL AS TO HOW CORNER WAS LOCATED AND IDENTIFIED OR RESTORED.

This corner was found while making a survey in this area. Found Teed's 1901 stake bottom from site of his SW witness. Point in fairly good condition. Falls proportionately at proper latitude although about 1' west of true line, according to our survey.

SURVEYOR'S SEAL

SIGNED Kenneth J. Oetting DATE 9/18/61  
REGISTERED LAND SURVEYOR