

MICHIGAN  
DEPARTMENT OF CONSERVATION  
FORESTRY DIVISION

# LAND CORNER RECORD

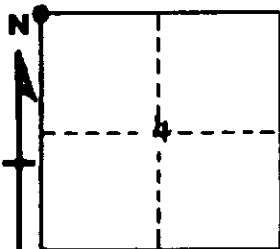
T. 22 N.R. 9 W  
T. 23 NR 9 W Wexford COUNTY

DESCRIPTION OF CORNER Section corner common to Sections 4-5-32-33

CORNER MONUMENT 1" pipe with 4" aluminum cap

DATE MONUMENT PLACED AND WITNESSED 9-6-61

WITNESSES TO CORNER.....



16" W. Pine - S35W - 34.3 feet  
6" Maple - N55W - 14.2 feet

AND

CIRCLE CORNER REGISTERED

DESCRIPTION IN DETAIL AS TO HOW CORNER WAS LOCATED AND IDENTIFIED OR RESTORED.

This corner was restored while making a survey in this area. Set corner at fence corner which is supported by the remains of Teed's SW witness of a 1901 survey. Falls within one foot of line over 1/4 and section corner south, and checks Teed's record measurements, proportionately, to 1/4 corners south and east. Remains of a very old fence line from this corner and running south very near our line for some 300' before becoming obliterated. Teed's post probably destroyed when setting fence post. Considered best available evidence of proper location for corner.

SURVEYOR'S SEAL

SIGNED Kenneth J. Ostling DATE 9-18-61  
REGISTERED LAND SURVEYOR