

LAND CORNER RECORDATION CERTIFICATE
Filing Requirement of Act 74, Mich. PA 1970

For Corners In: Wexford Located In _____ Corner Code # _____
(County)

1. Public Land Survey T _____ R _____
T _____ R _____

2. Property Controlling in Section S 15 T 23N R 10W 2
S 15 T 23N R 10W 9

3. Miscellaneous Property in Section S _____ T _____ R _____
S _____ T _____ R _____

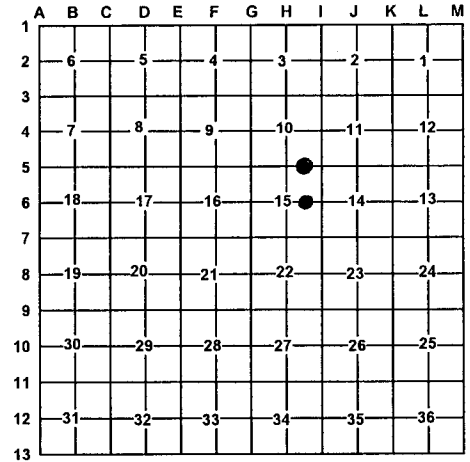
4. Lot No: _____ Recorded Plat: _____

5. Private Claims: _____

I, Craig W. McVean, in a field survey on May 30, 2007 do hereby state that under requirements of PA 74, Michigan PA of 1970, the corner points mentioned in lines 1 and 2 above were in conformance with regulations and rules therefore as required in the current manual of survey instructions of the United States Department of the Interior, Bureau of Land Management or by a decree of a Court of Law and/or that the corner points mentioned in lines 3, 4 and 5 above were in conformance with the rules of the Michigan Board of Land Surveyors or by a Decree of a Court of Law; established, re-established, monumented, recovered, found as expressed below:

NOTE: Not more than 2 corners, all in the same town and range, may be recorded on this certificate.

Register of Deeds Stamp & File Number



A. Description of original monument and accessories and/or subsequent restoration:

2 - None

9 - None



B. Description of corner evidence found and/or method applied in restoring or re-establishing corner:

2 - E 1/16 Common to Sections 10 & 15, T23N, R10W. Set stamped 2" Aluminum cap on 5/8" x 34" rebar per standard BLM procedure. South 40.5 to centerline E-W 2-track.

9 - CE 1/16 of Section 15, T23N, R10W. Set stamped 2" Aluminum cap on 5/8" x 34" rebar per standard BLM procedure. South 42' to E-W fence remains, East 17' to N-S fence remains.

C. Description of monument for corner and accessories established to perpetuate locating the position of the corner:

2 - Stamped 2" Aluminum cap, stamped, on 5/8" x 34" rebar S34°E 27.33' to set nail and tag in SW side 14" S. Maple S8°W 30.24' to set nail and tag in E. side 17" S. Maple S66°W 37.94' to set nail and tag in N side 4" S. Maple N33°E 41.09' to set nail and tag in E side 5" S. Maple Set Blue Carsonite Post 1' SW

9 - 2" Aluminum cap, stamped, on 5/8" x 34" rebar N82°W 13.38' to set nail and tag in S side 6" R. Maple North 41.60' to set nail and tag in E. side 2" R. Maple S64°E 31.20' to set nail and tag in S side 16" W. Pine S22°W 33.90' to set nail and tag in W. side 4" R. Maple Set Cedar Post with location tag 1' SW

Signed by: Craig W. McVean
Surveyor's Michigan License No.: 39088

Date: 2/6/2008