

# LAND CORNER RECORDATION CERTIFICATE

Filing Requirement of Act 74, Mich. PA 1970

For Corners In:  
Wexford Located In \_\_\_\_\_ Corner Code # \_\_\_\_\_  
 (County)

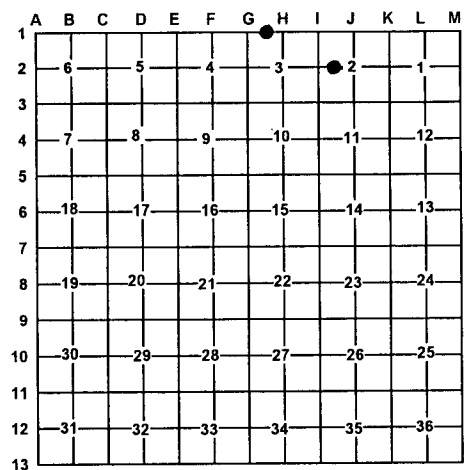
1. Public Land Survey		T _____	R _____	
		T _____	R _____	
2. Property Controlling in Section	S <u>3</u>	T <u>24N</u>	R <u>9W</u>	<u>1</u>
	S <u>2</u>	T <u>24N</u>	R <u>9W</u>	<u>8</u>
3. Miscellaneous Property in Section	S _____	T _____	R _____	_____
	S _____	T _____	R _____	_____

4. Lot No: \_\_\_\_\_ Recorded Plat: \_\_\_\_\_  
 5. Private Claims: \_\_\_\_\_

I, Craig W. McVean, in a field survey on Aug. 15, 2006 do hereby state that under requirements of PA 74, Michigan PA of 1970, the corner points mentioned in lines 1 and 2 above were in conformance with regulations and rules therefore as required in the current manual of survey instructions of the United States Department of the Interior, Bureau of Land Management or by a decree of a Court of Law and/or that the corner points mentioned in lines 3, 4 and 5 above were in conformance with the rules of the Michigan Board of Land Surveyors or by a Decree of a Court of Law; established, re-established, monumented, recovered, found as expressed below:

**NOTE: Not more than 2 corners, all in the same town and range, may be recorded on this certificate.**

Register of Deeds Stamp & File Number



**A. Description of original monument and accessories and/or subsequent restoration:**

- 1 – 1914 – Schaaf Index – Iron Set  
 - 1987 – LCRC – L. 3, p. 94 – Grand Traverse Co. Records – R. F. Mitchell – Fd. 2" pipe in conc. – 8" below Rd.  
 Raised to surface with 1/2" rerod w/ cap #28417.  
 N47°W 6" J. Pine 48.29'; N40°E 6" J. Pine 40.77'; S46°W 12" J. Pine 49.02'
- 8 – 1964 – Recorded plat of "Chippewa Creeksites" L. 1 of plats, pg. 154 – Paul H. Jones – R.P.E. - Conc. mon. set  
 - 1980 - Recorded Survey L. 1, pg. 849 & 850 – J. L. Wilcox P.S., iron set. Plat Cor. is N89°20'46" E 24.69' and then S0°56'15" W 1.80'.

**B. Description of corner evidence found and/or method applied in restoring or re-establishing corner:**

- 1 – W. 1/16 Cor. common to Sec. 3, T24N, R9W and Sec. 34, T25N, R9W – Fd. 1/2" iron rod w/ cap #28417 per LCRC - L. 3, p. 94 – raised over 1 1/2" iron pipe stub in conc. base (Schaaf monument) 0.8' below road surface. Accepted 1/2" iron rod w/ cap as the best available evidence of the position of the corner.
- 8 – CW 1/16 Cor. Sec. 2, T24N, R9W – Fd. 4" round conc. mon. w/ 1/2" iron that appears to have been moved from SE. Cor. of "Chippewa Creeksites" plat to Wilcox's position. Fd. hole where old plat mon. was. Replaced missing conc. mon. in hole with 1/2" x 18" rebar for Plat Corner. Plat Corner is erroneous for Corner '8'. Accepted conc. mon. as the best available evidence of the position of the corner.

**C. Description of monument for corner and accessories established to perpetuate locating the position of the corner:**

- 1 – Cut off top of 1/2" iron rod and epoxied stamped 2" Alum. Cap on 1/2" iron rod and added monument box.  
 S43°E 49.03' to fd. nail in N.W. side 12" Jack Pine (RFM)  
 N46°W 54.83' to set N & T in SW side 8" Jack Pine  
 N47°W 48.27' to fd. nail in SW side J. Pine Stp. (RFM)  
 N52°E 53.48' to set N & T in NW side 7" J. Pine  
 South 33.01' to set 2" Alum. Cap on 5/8" x 34" rebar on line with Blue Carsonite Post w/ loc. tag
- 8 – Stamped 2" Alum. Cap on 5/8" x 34" rebar.  
 Set Blue Carsonite Post w/ loc. tag 1' South.  
 N33°E 25.16' to set N & T in NW side 12" W. Oak  
 S46°E 17.05' to set N & T in NE side 9" R. Pine  
 S26°W 4.55' to set N & T in SE side 8" R. Pine  
 S70°W 9.34' to set N T in S. side 8" R. Pine  
 S85°39'E 24.79' to set 1/2" x 18" rebar at plat corner

Signed by: Craig W. McVean  
 Surveyor's Michigan License No.: 39088

Date: 3/15/2007

