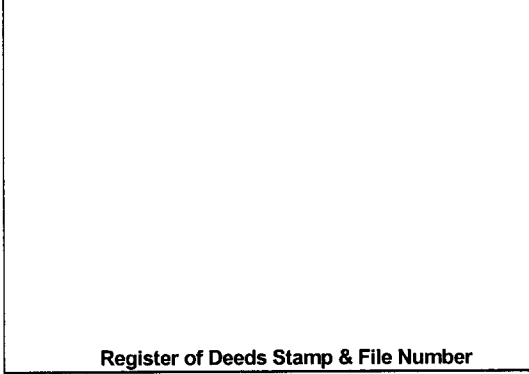


LAND CORNER RECORDATION CERTIFICATE

Filing Requirement of Act 74, Mich. PA 1970

For Corners In: _____ Located In _____ Corner Code # _____
 Wexford (County)

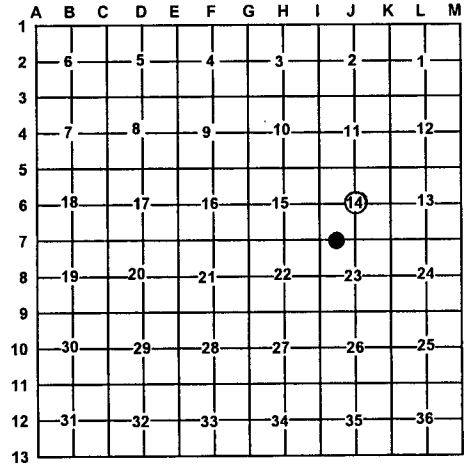
1. Public Land Survey		T	<u>24N</u>	R	<u>9W</u>	<u>J6</u>
		T	_____	R	_____	_____
2. Property Controlling in Section	S	14	T	<u>24N</u>	R	<u>9W</u>
	S	_____	T	_____	R	_____
3. Miscellaneous Property in Section	S	_____	T	_____	R	_____
	S	_____	T	_____	R	_____



4. Lot No: _____ Recorded Plat: _____
 5. Private Claims: _____

I, Craig W. McVean, in a field survey on May 24, 2006 do hereby state that under requirements of PA 74, Michigan PA of 1970, the corner points mentioned in lines 1 and 2 above were in conformance with regulations and rules therefore as required in the current manual of survey instructions of the United States Department of the Interior, Bureau of Land Management or by a decree of a Court of Law and/or that the corner points mentioned in lines 3, 4 and 5 above were in conformance with the rules of the Michigan Board of Land Surveyors or by a Decree of a Court of Law; established, re-established, monumented, recovered, found as expressed below:

NOTE: Not more than 2 corners, all in the same town and range, may be recorded on this certificate.



A. Description of original monument and accessories and/or subsequent restoration:

J6 – 1975 – Unrec. Survey – Wilcox & Assoc – Job #6801 – J. L. Wilcox – Set concrete mon. N10W 16.30' - 8" poplar N55°W 46.10' – 6" dbl. Hemlock

15 – 1975 – Unrec. Survey – Wilcox & Assoc. – Job #6801 – J. L. Wilcox – Set 1/2" iron

B. Description of corner evidence found and/or method applied in restoring or re-establishing corner:

J6 – Center of Section 14, T24N, R9W - Found 4" round concrete monument w/ 1/2" rebar, up 1.3', in Tag Elder Swamp per Wilcox. Fits calculated intersection of 1/4 line closely. Fit 1 living BT and remains of another. Concrete monument accepted as best available evidence of the position of the corner.

15 – W 1/16 corner common to Sections 14 & 23, T24N, R9W. Found 4" round concrete monument with 1/2" bar that fits Wilcox Survey. SE 21' to centerline of 2-track NE-SW. Concrete monument accepted as best available evidence of the position of the corner.

C. Description of monument for corner and accessories established to perpetuate locating the position of the corner:

J6 – Added stamped 2" Aluminum cap on fd. 1/2" rebar in 4" concrete round monument.
 N07°W 16.55' to set N & T in W. side 15" poplar (JLW)
 S28°W 18.88' to set N & T in E. side 4" Fir
 N47°E 33.44' to set N & T in NW side 5" Fir
 S69°E 37.37' to set N & T in NE side 4" Cherry
 Set Blue Carsonite Post 1' North
 NW 0.9' to fd. steel fence post
 N67°E 40.82' to set N & T in N. side 7" R. Maple

15 – 4" round concrete monument w/ 1/2" iron bar.
 N70°E 14.79' to set N & T in S. side triple 15" R. Maple
 N02°W 69.57' to set N & T in W. side twin 10" R. Maple
 N86°W 94.49' to set N & T in N. side 3" W. Pine
 S20°E 39.11' to set N & T in W. side 8" W. Spruce
 Set Blue Carsonite post with location tag 1' NW

Signed by: Craig W. McVean
 Surveyor's Michigan License No.: 39088

Date: 3/15/2007

