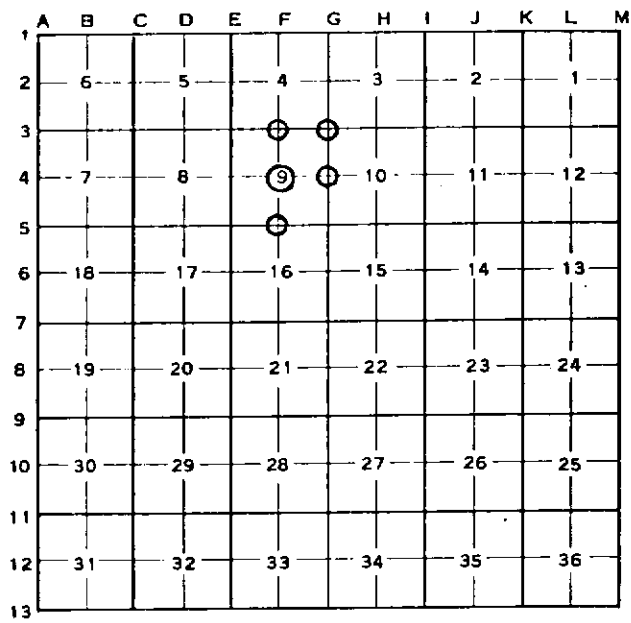


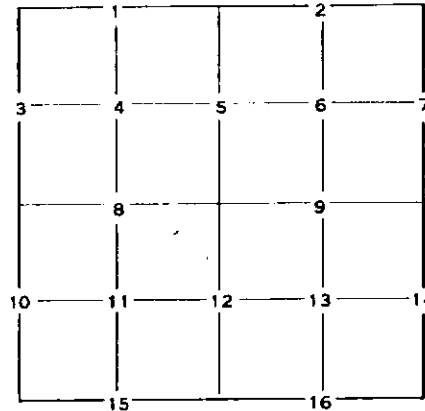
CORNER NUMBERING CODE DIAGRAMS FOR IDENTIFYING LAND CORNER RECORDATIONS AND INDEXING

FOR PUBLIC LAND SURVEY CORNERS IN THE
T. 24 N., R. 10 W. (MENTIONED OVER)



Apply letter prefix for corner points encircled above for identifying corner recordation numbers over.

FOR PROPERTY CONTROLLING AND MISC.
PROPERTY CORNERS WITHIN THE SECTION
(MENTIONED OVER AND EXCLUDE LOT CORNER)



1. Above coded numbers are positioned on 1/16 fractional lines of the section.
2. Township corner code numbers shall be applied to corners of above typical section not numbered.
3. Miscellaneous property corners within a section, located at points other than numbered above, shall be referenced to at least two of above corner code numbers.
4. Private claim corners to be tied to rectangular land corners if possible - sketch required below.

EXPLANATORY SKETCH IF NECESSARY -- BELOW

FROM REVERSE

B. (continued)

G-4 Found Fargo pipe which fit county road commission witness.