

STATE OF MICHIGAN  
DEPARTMENT  
OF  
NATURAL RESOURCES

LAND CORNER RECORD

WEXFORD COUNTY

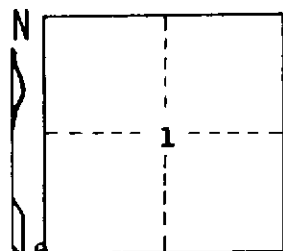
T 24 N R 11 W

DESCRIPTION OF CORNER Sec. corner common to Sections 1 & 2 - 11 & 12

CORNER MONUMENT Found 3/4" pipe in blacktop county road

DATE MONUMENT PLACED AND WITNESSED 7-8-70

WITNESSES TO CORNER..... Ctr. E-W B Top Road Due S. 4'



12" B. Cherry N 78 E 96.1'

P. Pole S 70 E 108.7'

AND

Cedar Guard Post Due N 33'  
with Location Tag

CIRCLE CORNER REGISTERED

DESCRIPTION IN DETAIL AS TO HOW CORNER WAS LOCATED AND IDENTIFIED OR RESTORED.

This corner was recovered while making a retracement <sup>Survey</sup> in this area. The corner fits Wexford County Road Commission witnesses.

SURVEYOR'S SEAL

SIGNED

*Carl F. Roever*

DATE

7-17-70

DISTRIBUTION:

REGISTERED LAND SURVEYOR 12028

County Courthouse  
Area Forester (Regions I & II)  
District or Region Surveyor  
Forestry Div., Lansing

R 4047  
Rev. 10/68