

# LAND CORNER RECORDATION CERTIFICATE

Filing Requirement of Act 74, Mich. PA 1970

For Corners In: Wexford (County)	Located In	Corner Code #	
1. Public Land Survey	T <u>24N</u> R <u>11W</u>	<u>D10</u>	
	T <u>24N</u> R <u>11W</u>	<u>B12</u>	
2. Property Controlling in Section	S _____ T _____ R _____	_____	
	S _____ T _____ R _____	_____	
3. Miscellaneous Property in Section	S _____ T _____ R _____	_____	
	S _____ T _____ R _____	_____	

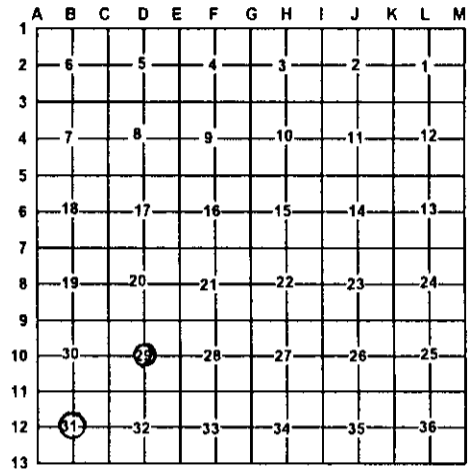
Register of Deeds Stamp & File Number

4. Lot No: \_\_\_\_\_ Recorded Plat: \_\_\_\_\_

5. Private Claims: \_\_\_\_\_

I, Craig W. McVean, in a field survey on May, 7 2003 do hereby state that under requirements of PA 74, Michigan PA of 1970, the corner points mentioned in lines 1 and 2 above were in conformance with regulations and rules therefore as required in the current manual of survey instructions of the United States Department of the Interior, Bureau of Land Management or by a decree of a Court of Law and/or that the corner points mentioned in lines 3, 4 and 5 above were in conformance with the rules of the Michigan Board of Land Surveyors or by a Decree of a Court of Law; established, re-established, monumented, recovered, found as expressed below:

**NOTE: Not more than 2 corners, all in the same town and range, may be recorded on this certificate.**



A. Description of original monument and accessories and/or subsequent restoration:

D10 - None

B12 - Rec. Sur. - L. 69, p. 302 - D. E. Schripsema - 1989 - Shows corner - No monument noted.

- Unrecord Sur. - Mitchell & Assoc. #20030100 - R. F. Mitchell - 2003 - Fd. Mon.; N62°E 14" Maple 16.63'; S55°E 12" Maple 9.30'; S47°W 14" Maple 33.97'; N68°W 8" Maple 26.95'

B. Description of corner evidence found and/or method applied in restoring or re-establishing corner:

D10 - C ¼ Cor. section 29 - Set 2" Alum. Cap on 5/8" x 34" rebar at intersection of ¼ line per standard BLM procedure.

B12 - C ¼ Cor. section 31 - Found a 4" concrete monument with ½" rerod. Calculated intersection of ¼ lines is 0.29' S and 0.17' W. Conc. Mon. accepted as the best available evidence of the position of the corner.

C. Description of monument for corner and accessories established to perpetuate locating the position of the corner:

D10 - 2" stamped aluminum cap on a 5/8" X 34" rebar  
N77°E 22.55' to set nail & tag in N side of 4" Poplar scribed 'XBT'  
S18°E 73.70' to set nail & tag in W side of 10" Cedar  
S75°E 93.25' to set nail & tag in N side of 12" Cedar scribed 'XBT'  
S20°W 37.76' to set nail & tag in W side of 4" R. Maple scribed 'XBT'  
Set Blue Carsonite Post 1' SW

B12 - Add 2" stamped aluminum cap on the ½" rebar in Conc. Mon.  
N54°E 16.57' to found nail in SE side of 16" R. Maple (RFM)  
S50°E 9.18' to found nail in SE side of 13" R. Maple (RFM)  
S53°W 33.92' to found nail in SE side of 16" R. Maple (RFM)  
N67°W 26.88' to found nail in SW side of 10" R. Maple (RFM)  
Set Blue Carsonite Post 1' NE

Signed by:

*Craig W. McVean*

Date:

*11/10/2003*

Surveyor's Michigan License No.:

39088

