

LAND CORNER RECORDATION CERTIFICATE

Filing Requirement of Act 74, Mich. PA 1970

For Corners In: Wexford (County)	Located In	Corner Code #	
1. Public Land Survey	T <u>24N</u> R <u>11W</u>	<u>F10</u>	
		R _____	
2. Property Controlling in Section	S <u>29</u> T <u>24N</u> R <u>11W</u>	<u>7</u>	
	S _____ T _____ R _____		
3. Miscellaneous Property in Section	S _____ T _____ R _____		
	S _____ T _____ R _____		

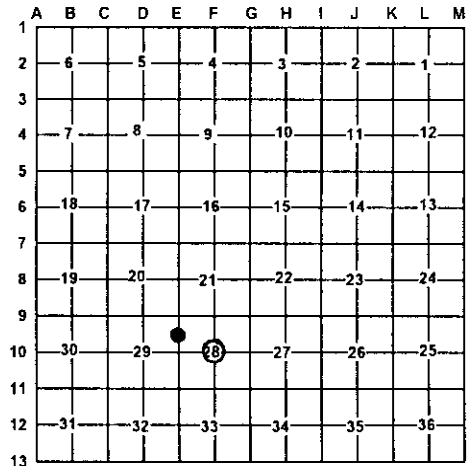
Register of Deeds Stamp & File Number

4. Lot No: _____ Recorded Plat: _____

5. Private Claims: _____

I, Craig W. McVean, in a field survey on May 13, 2003 do hereby state that under requirements of PA 74, Michigan PA of 1970, the corner points mentioned in lines 1 and 2 above were in conformance with regulations and rules therefore as required in the current manual of survey instructions of the United States Department of the Interior, Bureau of Land Management or by a decree of a Court of Law and/or that the corner points mentioned in lines 3, 4 and 5 above were in conformance with the rules of the Michigan Board of Land Surveyors or by a Decree of a Court of Law; established, re-established, monumented, recovered, found as expressed below:

NOTE: Not more than 2 corners, all in the same town and range, may be recorded on this certificate.



A. Description of original monument and accessories and/or subsequent restoration:

Z - Rec. Sur. - L. 69, P. 428 - J. Ray - 1990 -
Set 1/2" iron and cap

F10 - None



B. Description of corner evidence found and/or method applied in restoring or re-establishing corner:

Z - N 1/16 corner common to sections 29 & 28 -
Found 1/2" X 18" rebar per Rec. Survey.
1/2" rebar accepted as the best available evidence of the position of the corner.

F10 C 1/4 corner of section 28 - Set 2" Alum. Cap on 5/8" x 34" rebar at intersection of 1/4 line per standard BLM procedure. CL. of E-W Gravel Rd. is 62' N.

C. Description of monument for corner and accessories established to perpetuate locating the position of the corner:

Z Replaced 1/2" rebar with 2" stamped aluminum cap on a 5/8" X 34" Rebar
S32°W 40.94' to set nail & tag in E side 22" Walnut
S24°E 90.28' to set nail & tag in E side Tri. 10" Cherry
N6°W 159.17' to set nail & tag in W side 7" Cherry
N60°W 175.78' to set nail & tag in E side Tw. 6" R. Maple
Set Blue carsonite post with location tag 1' NE
NNE 0.3' to Face Fd. Steel Fence post

F10 - 2" stamped aluminum cap on the 5/8" X 34" rebar
S22°E 17.25' to C/L 1" W. Pine
S45°E 44.20' to set nail & tag in NE side 2" Fir
N40°E 52.95' to set 1/2" X 18" rebar
N47°W 73.87' to set nail & tag in SW side 9" Poplar scribed 'XBT'
Set blue carsonite post with location tag 1' E

Signed by: Craig W. McVean
Surveyor's Michigan License No.: 39088

Date: 11/10/2003