

# LAND CORNER RECORDATION CERTIFICATE

Filing Requirement of Act 74, Mich. PA 1970

For Corners In: Wexford Located In \_\_\_\_\_ Corner Code # \_\_\_\_\_  
(County)

1. Public Land Survey		T _____	R _____		
		T _____	R _____		
2. Property Controlling in Section	S <u>20</u>	T <u>24N</u>	R <u>12W</u>		<u>9</u>
	S <u>20</u>	T <u>24N</u>	R <u>12W</u>		<u>14</u>
3. Miscellaneous Property in Section	S _____	T _____	R _____		
	S _____	T _____	R _____		

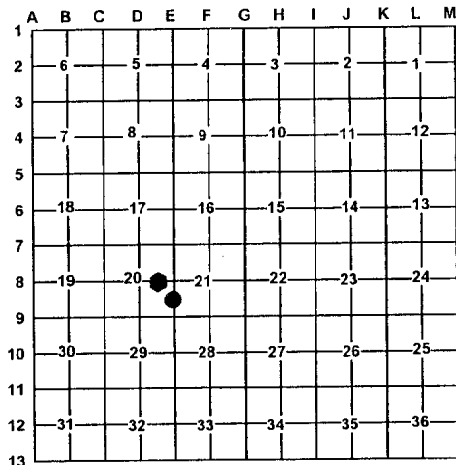
Register of Deeds Stamp & File Number \_\_\_\_\_

4. Lot No: \_\_\_\_\_ Recorded Plat: \_\_\_\_\_

5. Private Claims: \_\_\_\_\_

I, Craig W. McVean, in a field survey on May 13, 2008 do hereby state that under requirements of PA 74, Michigan PA of 1970, the corner points mentioned in lines 1 and 2 above were in conformance with regulations and rules therefore as required in the current manual of survey instructions of the United States Department of the Interior, Bureau of Land Management or by a decree of a Court of Law and/or that the corner points mentioned in lines 3, 4 and 5 above were in conformance with the rules of the Michigan Board of Land Surveyors or by a Decree of a Court of Law; established, re-established, monumented, recovered, found as expressed below:

**NOTE: Not more than 2 corners, all in the same town and range, may be recorded on this certificate.**



A. Description of original monument and accessories and/or subsequent restoration:

9 – None

14 – None

B. Description of corner evidence found and/or method applied in restoring or re-establishing corner:

9 – CE 1/16, Section 20 - Set a stamped 2" Aluminum cap on 5/8" x 34" rebar per standard BLM procedure. North 48' to downed E-W barbed wire fence.

14 – S 1/16 Corner Common to Sections 20 & 21  
Set a stamped 2" Aluminum cap on 5/8" x 34" rebar per standard BLM procedure.  
Falls at Top of Hill

C. Description of monument for corner and accessories established to perpetuate locating the position of the corner:

9 – Stamped 2" Aluminum cap on 5/8" x 34" rebar  
N04°W 66.45' to set nail and tag on W. side 5" Sugar Maple  
S75°E 34.80' to set nail and tag on S. side 6" Sugar Maple  
S19°E 11.71' to set nail and tag on E. side 6" Beech  
S36°W 75.81' to set nail and tag on NW side 4" S. Maple  
Set Blue Carsonite Post with location tag 1' SW

14 – Stamped 2" Aluminum cap on 5/8" x 34" rebar  
S75°E 63.46' to set nail and tag in N. side triple 16" S. Maple  
East 34.48' to set nail and tag in S. side 36" S. Maple  
N38°E 96.96' to set nail and tag on SE side 18" S. Maple  
S64°W 36.04' to set nail and tag in NW side twin 18" S. Maple  
Set Blue Carsonite post with location tag 1' SW

Signed by: \_\_\_\_\_

Craig W. McVean

Date: \_\_\_\_\_

1/14/2009

Surveyor's Michigan License No.: \_\_\_\_\_

39088

